

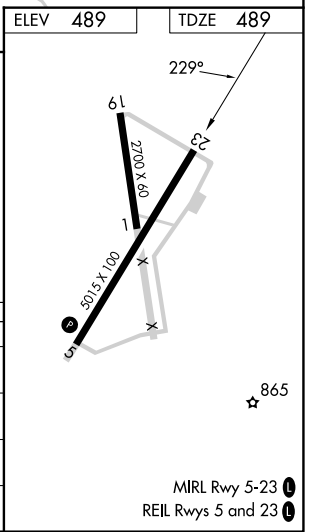
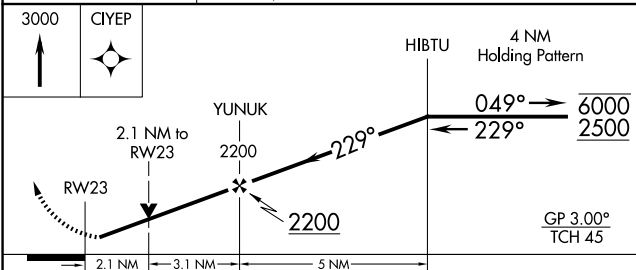
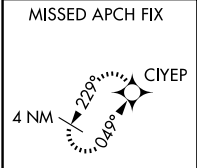
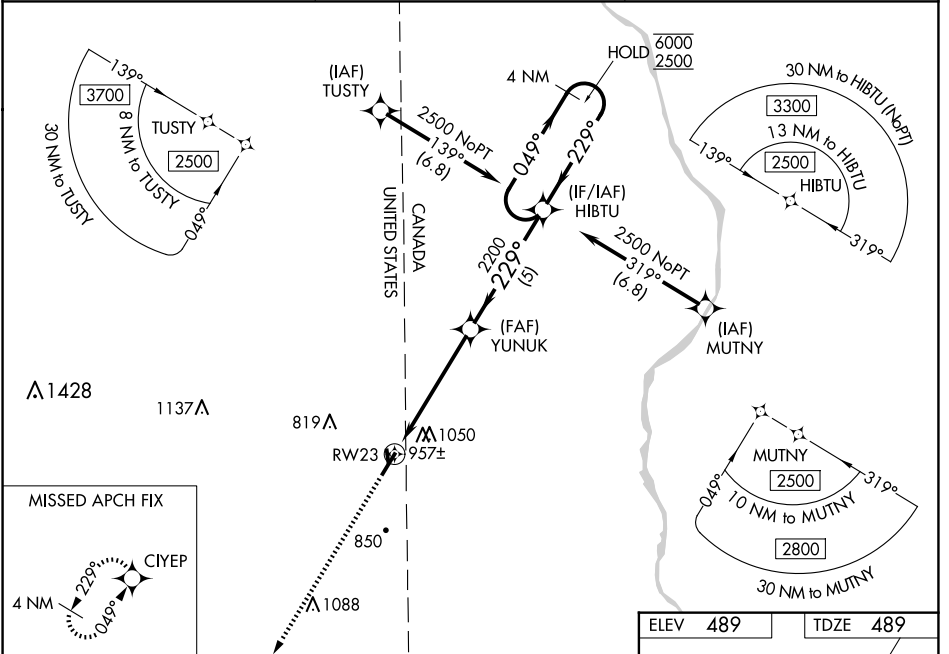
WAAS CH <b>66046</b> <b>W23A</b>	APP CRS <b>229°</b>	Rwy Idg TDZE Apt Elev	<b>5015</b> <b>489</b> <b>489</b>
--	------------------------	-----------------------------	---

# RNAV (GPS) RWY 23

HOULTON INTL (HUL)

RNP APCH - GPS.		MISSED APPROACH: Climb to 3000 direct CIYEP and hold.
<p><b>⚠</b> For uncompensated Baro-VNAV systems, LNAV/VNAV NA below -20°C or above 54°C. Rwy 23 helicopter visibility reduction below ¾ SM NA. Circling Rwy 1, 19 NA at night. Circling NA for Cat C east of Rwy 5-23.</p>		

ASOS <b>132.025</b>	BOSTON CENTER <b>120.25 346.4</b>	UNICOM <b>122.8 (CTAF)</b>
------------------------	--------------------------------------	-------------------------------



CATEGORY	A	B	C	D
LPV DA	796-1	307 (400-1)		NA
LNAV/VNAV DA	1301-2½	812 (900-2½)		NA
LNAV MDA	1220-1	731 (800-1)	1220-2 731 (800-2)	NA
CIRCLING	1320-1¼ 831 (900-1¼)	1400-1¼ 911 (1000-1¼)	1400-2¾ 911 (1000-2¾)	NA

NE-1, 23 JAN 2025 to 20 FEB 2025

NE-1, 23 JAN 2025 to 20 FEB 2025