

# HI-TACAN RWY 17R

TACAN EFD Chan <b>31</b>	APCH CRS <b>163°</b>	Rwy Idg TDZE Arpt Elev <b>9001 32 33</b>	AL-197 [USAF]	ELLINGTON (KEFD)
--------------------------	----------------------	--	---------------	------------------

RADAR required for procedure entry.

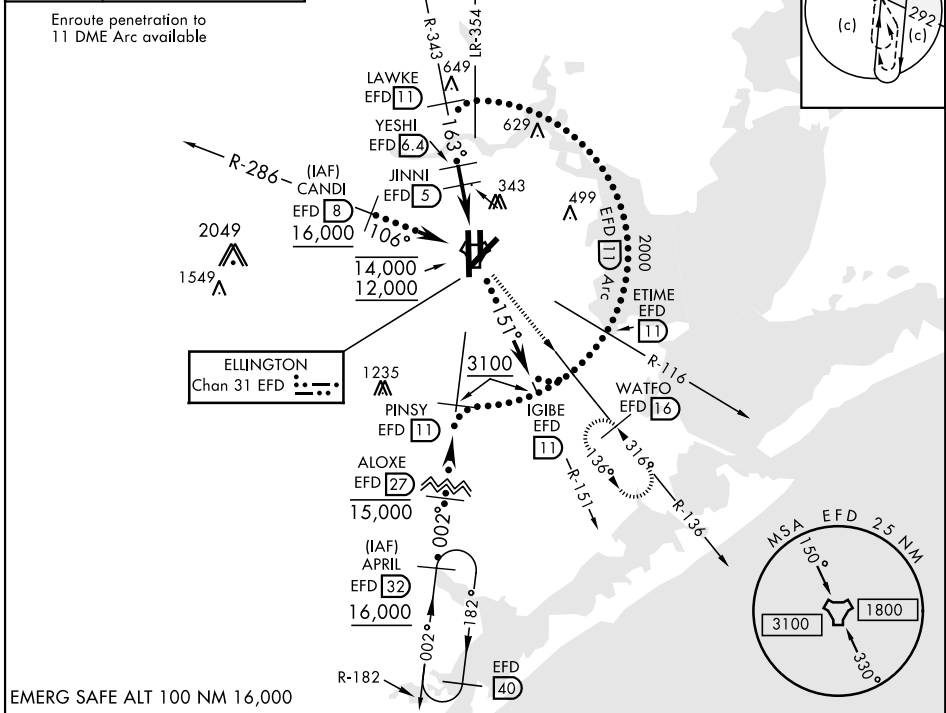
**MAJLF** (A4)

MISSED APPROACH: Climbing left turn to 3100 on EFD TACAN R-136 to WATFO/EFD 16 DME and hold.

\* When ALS inop, increase CAT CDE vis to 1 1/2 miles.  
 \*\* Circling not authorized W of Rwy 17R-35L.

ATIS <b>135.575 269.9</b>	HOUSTON APP CON <b>134.45 284.0</b>	TOWER <b>126.05 253.5</b>	GND CON <b>121.6 275.8</b>
---------------------------	-------------------------------------	---------------------------	----------------------------

EFD TACAN	N29°36.36' W95°09.58'
CANDI	N29°39.24' W95°18.17'
APRIL	N29°04.53' W95°14.05'
WATFO	N29°23.90' W94°58.07'



EMERG SAFE ALT 100 NM 16,000	ETIME R-116 IGIBE R-151 11	3100 EFD R-136	WATFO EFD 16	ELEV 33	TDZE 32
<p>VGSI and descent angles not coincident.</p>	<p>TWR 112</p>	<p>HIRL Rwy 4-22 and 17R-35L TDZL/CL Rwy 17R, 22 and 35L</p>			
CATEGORY	C	D	E		
S-17R *	500/60	468 (500-1 1/2)			
CIRCLING **	580-1 1/2 547 (600-1 1/2)	640-2 607 (700-2)	700-2 1/4 667 (700-2 1/4)		

# HI-TACAN RWY 17R



SC-5, 23 JAN 2025 to 20 FEB 2025

SC-5, 23 JAN 2025 to 20 FEB 2025