

(INDIE8.INDIE) 21280

AL-197 (FAA)

ELLINGTON (EFD)

HOUSTON, TEXAS

# INDIE EIGHT DEPARTURE (RNAV)

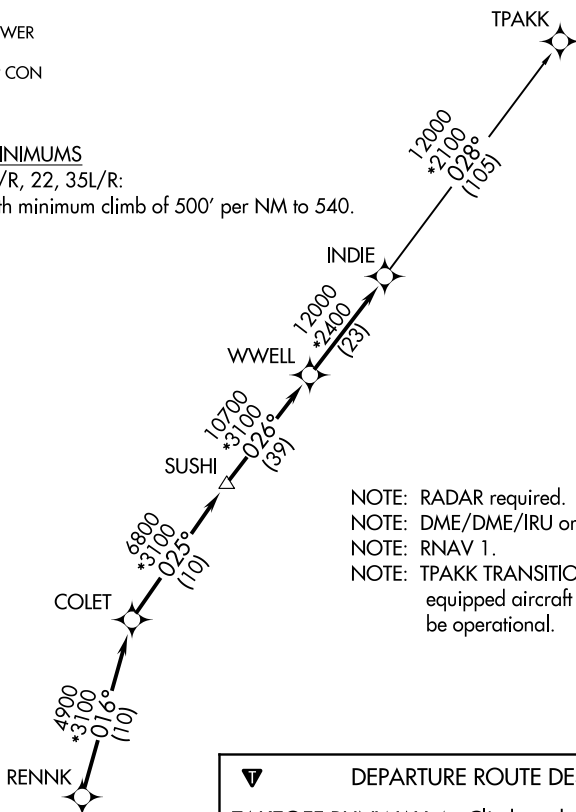
ATIS  
 135.575 269.9  
 GND CON  
 121.6 275.8  
 ELLINGTON TOWER  
 126.05 253.5  
 HOUSTON DEP CON  
 134.45 284.0

**TOP ALTITUDE:  
ASSIGNED BY ATC**

## TAKEOFF MINIMUMS

Rwys 4, 17L/R, 22, 35L/R:

Standard with minimum climb of 500' per NM to 540.



- NOTE: RADAR required.
- NOTE: DME/DME/IRU or GPS required.
- NOTE: RNAV 1.
- NOTE: TPAKK TRANSITION: For non GPS equipped aircraft TNV DME must be operational.

## DEPARTURE ROUTE DESCRIPTION

**TAKEOFF RUNWAY 4:** Climb on heading 039° to 540 for RADAR vectors to RENNK, then . . . .

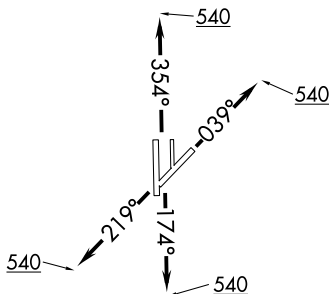
**TAKEOFF RUNWAYS 17L/R:** Climb on heading 174° to 540 for RADAR vectors to RENNK, then . . . .

**TAKEOFF RUNWAY 22:** Climb on heading 219° to 540 for RADAR vectors to RENNK, then . . . .

**TAKEOFF RUNWAYS 35L/R:** Climb on heading 354° to 540 for RADAR vectors to RENNK, then . . . .

. . . . on track 016° to COLET, then on track 025° to SUSHI, then on track 026° to WWELL, then on track 026° to INDIE, then on (transition). Maintain ATC assigned altitude. Expect filed altitude 10 minutes after departure.

**TPAKK TRANSITION (INDIE8.TPAKK)**



NOTE: Chart not to scale.

SC-5, 23 JAN 2025 to 20 FEB 2025

SC-5, 23 JAN 2025 to 20 FEB 2025

# INDIE EIGHT DEPARTURE (RNAV)

(INDIE8.INDIE) 07OCT21

HOUSTON, TEXAS  
ELLINGTON (EFD)