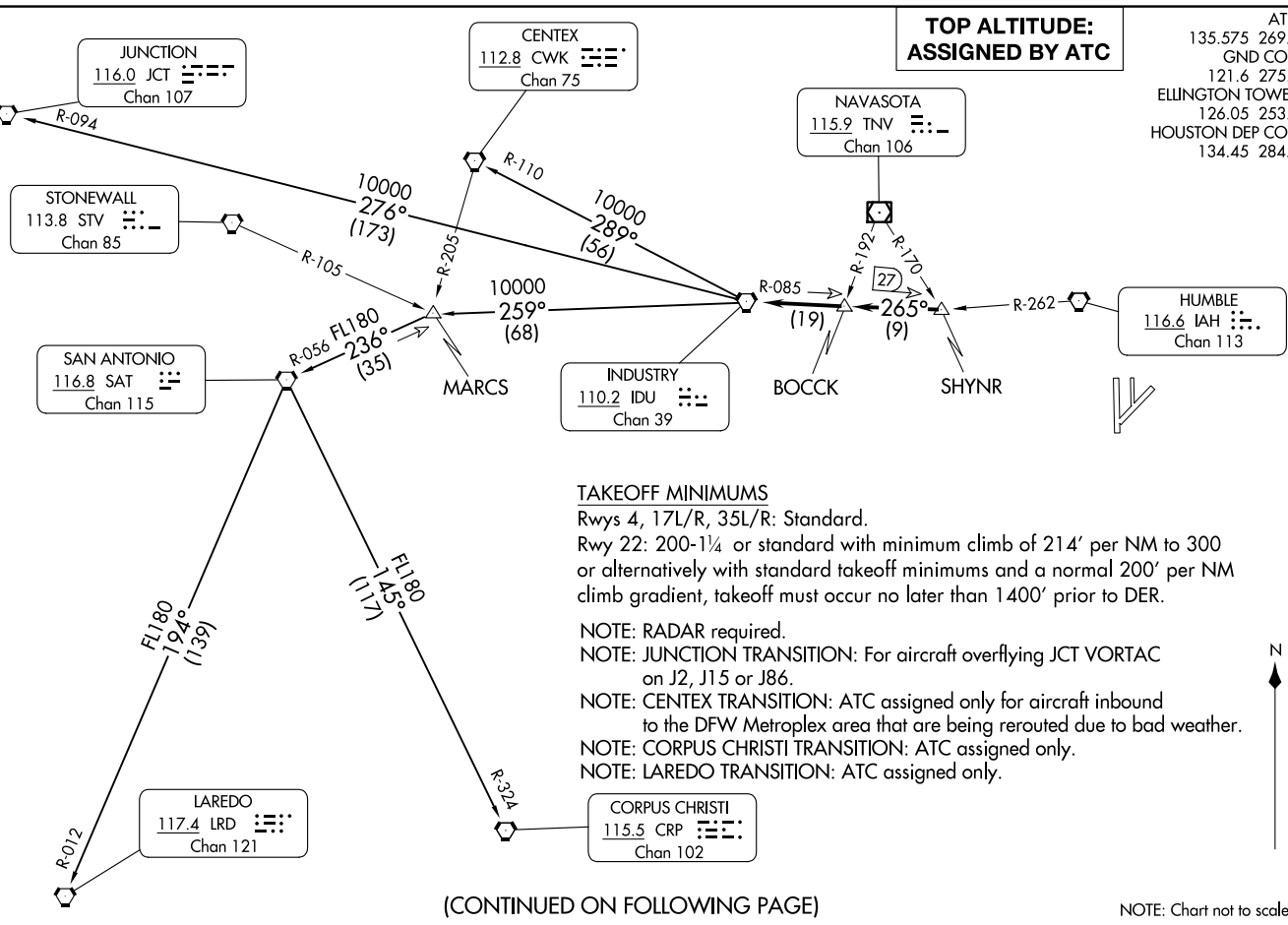


INDUSTRY ONE DEPARTURE  
(IDU1, IDU) 070CT21

INDUSTRY ONE DEPARTURE  
(IDU1, IDU) 24137

ATIS  
135.575 269.9  
GND CON  
121.6 275.8  
ELLINGTON TOWER  
126.05 253.5  
HOUSTON DEP CON  
134.45 284.0

**TOP ALTITUDE:  
ASSIGNED BY ATC**



**TAKEOFF MINIMUMS**

Rwys 4, 17L/R, 35L/R: Standard.  
Rwy 22: 200-1/4 or standard with minimum climb of 214' per NM to 300 or alternatively with standard takeoff minimums and a normal 200' per NM climb gradient, takeoff must occur no later than 1400' prior to DER.

- NOTE: RADAR required.
- NOTE: JUNCTION TRANSITION: For aircraft overflying JCT VORTAC on J2, J15 or J86.
- NOTE: CENTEX TRANSITION: ATC assigned only for aircraft inbound to the DFW Metroplex area that are being rerouted due to bad weather.
- NOTE: CORPUS CHRISTI TRANSITION: ATC assigned only.
- NOTE: LAREDO TRANSITION: ATC assigned only.

(CONTINUED ON FOLLOWING PAGE)

NOTE: Chart not to scale.

HOUSTON, TEXAS  
ELLINGTON (EFTD)

ELLINGTON (EFTD)  
HOUSTON, TEXAS



DEPARTURE ROUTE DESCRIPTION

TAKEOFF ALL RUNWAYS: Climb on assigned heading for RADAR vectors to SHYNR INT. Maintain ATC assigned altitude. Expect filed altitude 10 minutes after departure, thence . . . .

. . . . on IDU R-085 to BOCCK INT, then on IDU R-085 to IDU VORTAC.

CENTEX TRANSITION (IDU1.CWK): From over IDU VORTAC on IDU R-289 and CWK R-110 to CWK VORTAC.

CORPUS CHRISTI TRANSITION (IDU1.CRP): From over IDU VORTAC on IDU R-259 to MARCS INT, then on SAT R-056 to SAT VORTAC, then on SAT R-145 and CRP R-324 to CRP VORTAC.

JUNCTION TRANSITION (IDU1.JCT): From over IDU VORTAC on IDU R-276 and JCT R-094 to JCT VORTAC.

LAREDO TRANSITION (IDU1.LRD): From over IDU VORTAC on IDU R-259 to MARCS INT, then on SAT R-056 to SAT VORTAC, then on SAT R-194 and LRD R-012 to LRD VORTAC.

SC-5, 23 JAN 2025 to 20 FEB 2025

SC-5, 23 JAN 2025 to 20 FEB 2025