

| | | | |
|--|------------------------|-----------------------------|---------------------------------------|
| WAAS CH 97629 W35A | APP CRS 354° | Rwy Idg TDZE Apt Elev | 9001 28 33 |
|--|------------------------|-----------------------------|---------------------------------------|

RNAV (GPS) RWY 35L

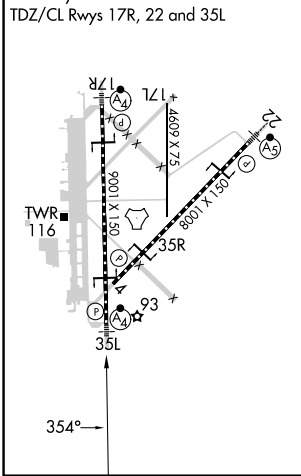
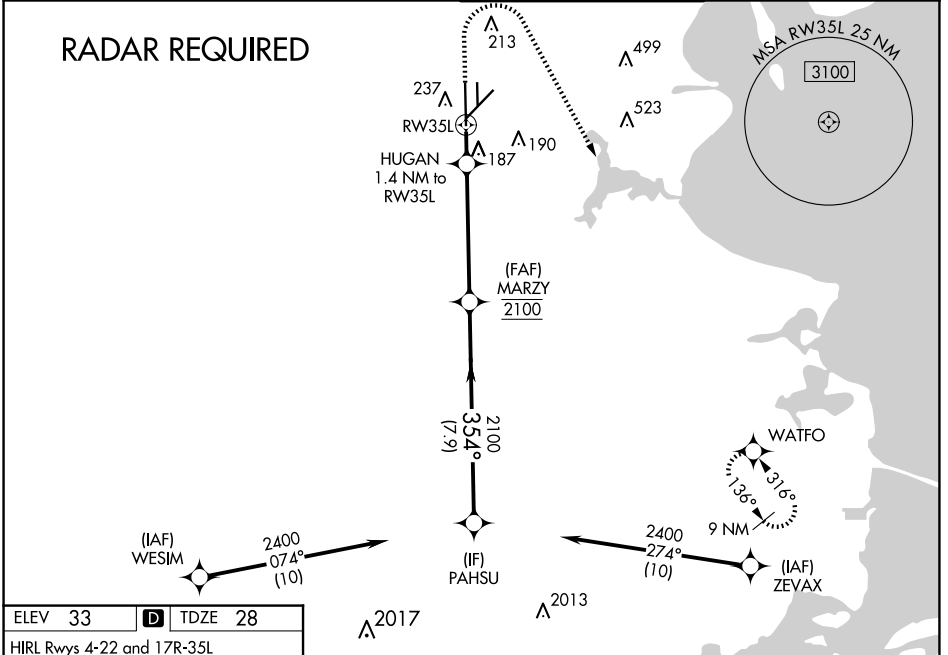
ELLINGTON (EFD)

⚠ For uncompensated Baro-VNAV systems, LNAV/VNAV NA below -15°C (5°F) or above 43°C (109°F). Circling NA west of Rwy 17R-35L. DME/DME RNP-0.3 NA. For inop MALSF, increase LNAV/VNAV all Cats visibility to 1½ mile, and LNAV Cats A and B visibility to 1 mile and Cats C, D and E visibility to 1½ mile. Inop table does not apply to LPV.

MALSF

MISSED APPROACH: Climb to 1500 then climbing right turn to 3100 direct WATFO and hold.

| | | | |
|------------------------------|--|--|-------------------------------|
| ATIS 135.575 269.9 | HOUSTON APP CON 134.45 284.0 | ELLINGTON TOWER 126.05 253.5 | GND CON 121.6 275.8 |
|------------------------------|--|--|-------------------------------|



ELEV 33 **D** TDZE 28

HIRL Rws 4-22 and 17R-35L
TDZ/CL Rws 17R, 22 and 35L

1500 3100 WATFO
VGSI and RNAV glidepath not coincident (VGSI Angle 3.00°/TCH 32).

*LNAV only.

HUGAN 1.4 NM to RW35L
MARZY 2100
PAHSU 2400
RW35L
520*
2100
354°
GP 3.00° TCH 54

| | | | | | |
|-------------------|--------|-------------|------------------------|----------------------|------------------------|
| CATEGORY | A | B | C | D | E |
| LPV DA | 228/40 | | 200 (200-¾) | | |
| LNAV/VNAV DA | 499/60 | | 471 (500-1¼) | | |
| LNAV MDA | 440/40 | 412 (500-¾) | 440/50 | | 412 (500-1) |
| C CIRCLING | 500-1 | 468 (500-1) | 580-1½ 547 (600-1½) | 640-2 607 (700-2) | 700-2¼ 667 (700-2¼) |

SC-5, 23 JAN 2025 to 20 FEB 2025

SC-5, 23 JAN 2025 to 20 FEB 2025