

HUDZY FOUR ARRIVAL
(HUDZY, HUDZY4) 100CT19

HOUSTON APP CON
120.05 379.1
CXO ATIS
118.325
DWH ATIS
128.375
EFD ATIS
135.575 269.9
HOU D-ATIS
124.6
IAH D-ATIS
124.05
SGR ATIS *
118.125
TME ATIS
119.525

CONROE/NORTH HOUSTON RGNL

HUMBLE
116.6 IAH
Chan 113

DAVID WAYNE HOOKS MEML

GEORGE BUSH INTCNTL/HOUSTON

WEST HOUSTON
HOUSTON EXEC



SUGAR LAND RGNL
HOUSTON/SOUTHWEST
TEXAS GULF COAST RGNL

WILLIAM P HOBBY
PEARLAND RGNL

ELLINGTON
SCHOLES INTL AT GALVESTON

CLEVELAND MUNI

CLWSN

BAYTOWN
RWJ AIRPARK

LA PORTE MUNI

TRINITY
114.75 MHF
Chan 94(Y)

LUFKIN
112.1 LFK
Chan 58

WAPPL
VERTICAL NAVIGATION
PLANNING INFORMATION

SAWMILL
113.75 SWB
Chan 84 (Y)

ALEXANDRIA
116.1 AEX
Chan 108

LAKE CHARLES
113.4 LCH
Chan 81

SABINE PASS
115.4 SBI
Chan 101

HUDZY TURBOJETS:
Expect 14000 280K

- NOTE: RADAR required.
- NOTE: For use by Turbojet and Turboprop aircraft capable of 280K or greater only.
- NOTE: DME/DME/IRU or GPS equipped aircraft must file the WAPPL (RNAV) STAR.
- NOTE: ATC assigned only for aircraft landing CXO, DWH, IAH, T78, and 6R3.

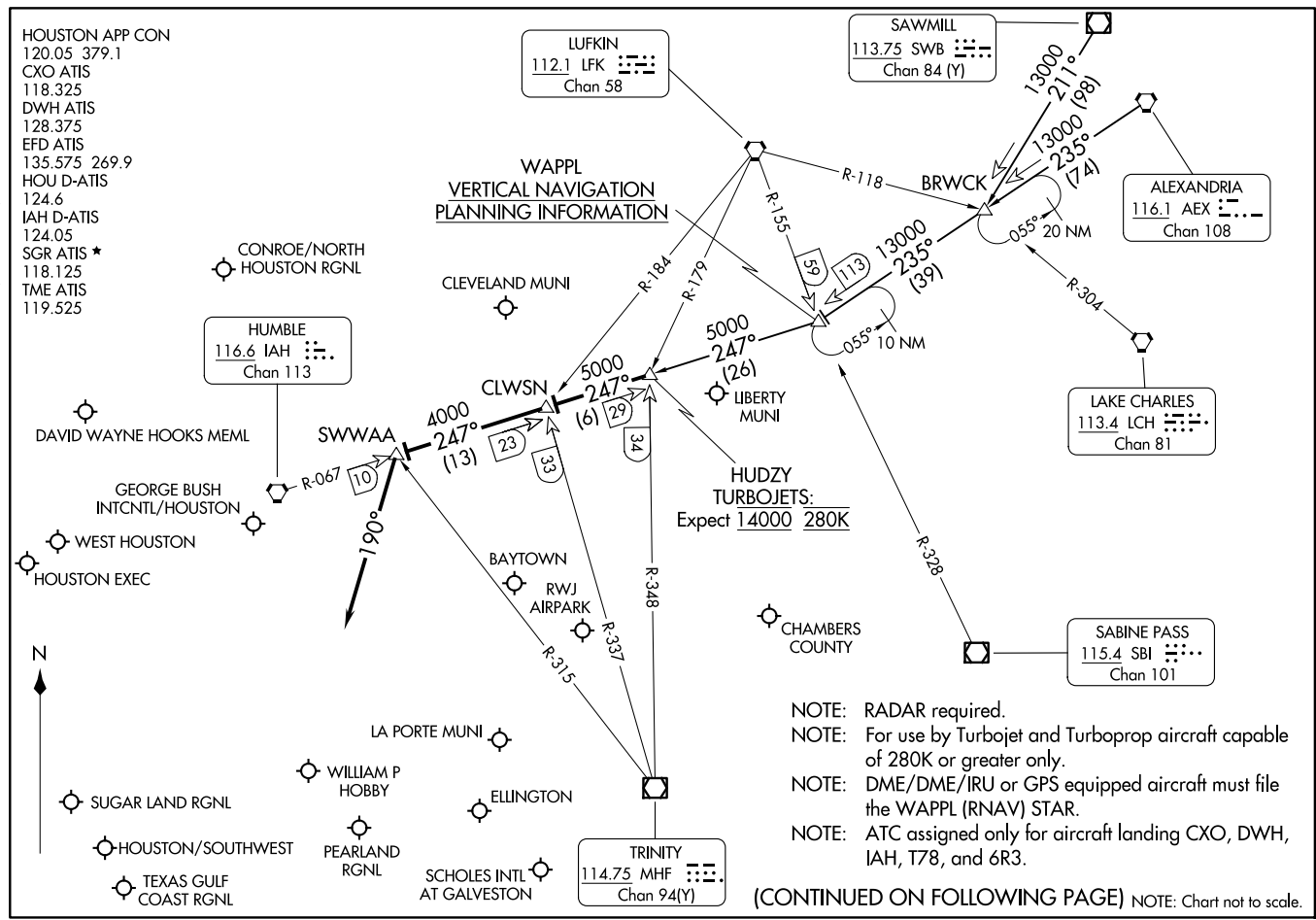
(CONTINUED ON FOLLOWING PAGE) NOTE: Chart not to scale.

HUDZY, HUDZY4) 24137

AL-198 (FAA)

HOUSTON, TEXAS

HOUSTON, TEXAS



ARRIVAL ROUTE DESCRIPTION

ALEXANDRIA TRANSITION (AEX.HUDZY4): From over AEX VORTAC on AEX R-235 to WAPPL, then on IAH R-067 to HUDZY. Thence. . . .

SAWMILL TRANSITION (SWB.HUDZY4): From over SWB VOR/DME on SWB R-211 to BRWCK, then on AEX R-235 to WAPPL, then on IAH R-067 to HUDZY. Thence. . . .

. . . .from over HUDZY on IAH R-067 to CLWSN, then on IAH R-067 to SWWAA, then on heading 190°. Expect RADAR vectors to final approach course.

SC-5, 23 JAN 2025 to 20 FEB 2025

SC-5, 23 JAN 2025 to 20 FEB 2025