


LOC I-LSE 111.1	APP CRS 180°	Rwy Idg 8536 TDZE 653 Apt Elev 655
---------------------------	------------------------	---------------------------------------------------------------

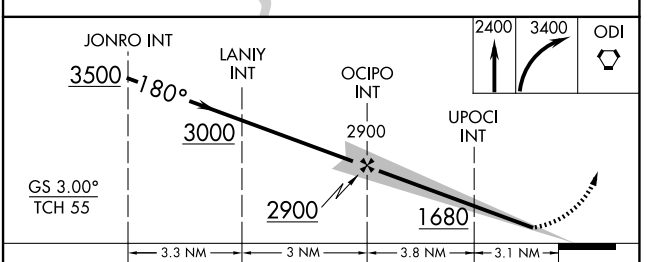
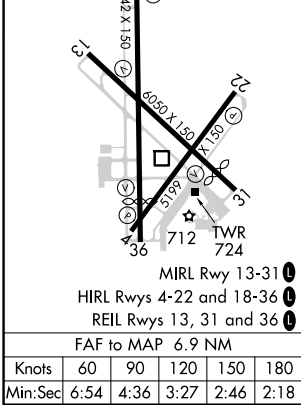
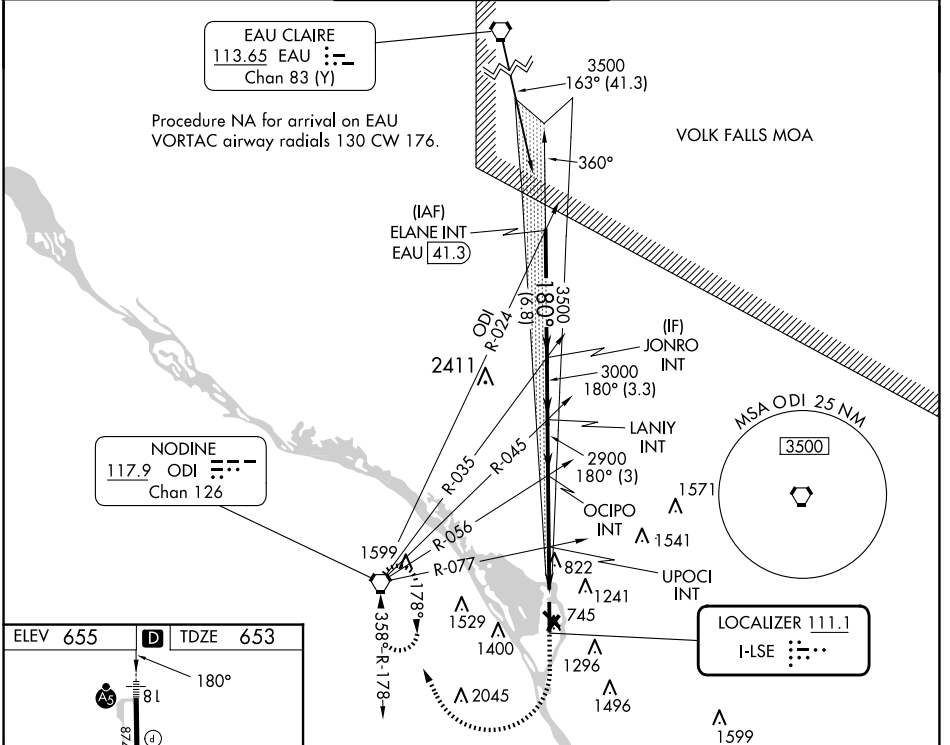
ILS or LOC RWY 18

LA CROSSE RGNL (LSE)

⚠ When local altimeter setting not received, use ONA altimeter setting and increase S-ILS 18 DA to 907 and increase all MDA 60 feet and S-LOC 18 visibility Cat C/D 1/2 SM, and Circling visibility Cat B 1/2 SM. For inop ALS increase S-LOC Cats C and D visibility to 1 3/8 SM.

MALSR

MISSED APPROACH: Climb to 2400 then climbing right turn to 3400 direct ODI VORTAC and hold.

ATIS 124.95	MINNEAPOLIS CENTER 128.6 363.0	LA CROSSE TOWER ★ 118.45 (CTAF) 251.075	GND CON 121.8	UNICOM 122.95
-----------------------	------------------------------------------	---------------------------------------------------	-------------------------	-------------------------



CATEGORY	A	B	C	D
S-ILS 18	853-1/2 200 (200-1/2)			
S-LOC 18	1140-1/2	487 (500-1/2)	1140-1	487 (500-1)
CIRCLING	1140-1 485 (500-1)	1460-1 805 (900-1)	1760-3 1105 (1200-3)	1820-3 1165 (1200-3)

EC-3, 23 JAN 2025 to 20 FEB 2025

EC-3, 23 JAN 2025 to 20 FEB 2025