

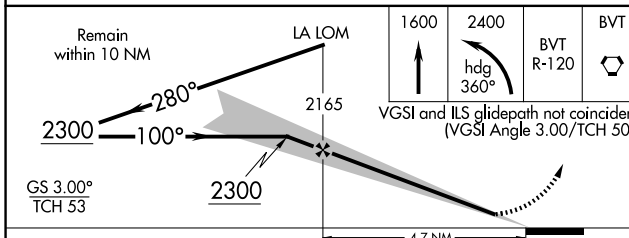
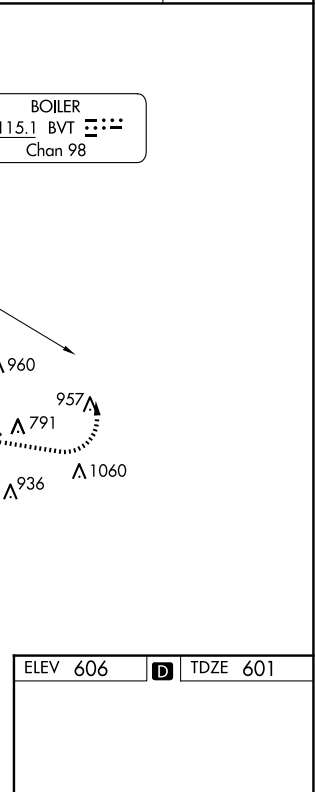
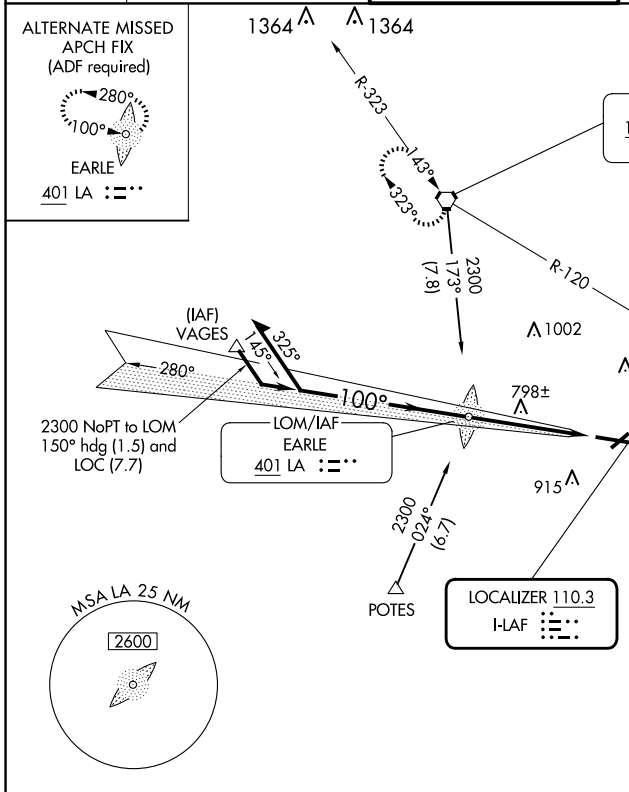
LOC I-LAF 110.3	APP CRS 100°	Rwy Idg TDZE Apt Elev	6600 601 606
---------------------------	------------------------	-----------------------------	---

ILS or LOC RWY 10

PURDUE UNIVERSITY (LAF)

	Circling Rwy 23 NA at night.		MISSED APPROACH: Climb to 1600 then climbing left turn to 2400 on heading 360° and BVT VORTAC R-120 to BVT VORTAC and hold.
--	------------------------------	--	---

ATIS 127.75	GRISSOM APP CON * 123.85 291.675	LAFAYETTE TOWER * 119.6 (CTAF) 0 343.625	GND CON 121.9 343.625	UNICOM 122.95
-----------------------	--	--	---------------------------------	-------------------------



CATEGORY	A	B	C	D
S-ILS 10	801-½ 200 (200-½)			
S-LOC 10	1060-½	459 (500-½)	1060-¾ 459 (500-¾)	1060-1 459 (500-1)
CIRCLING	1160-1	554 (600-1)	1320-2 714 (800-2)	1420-2¾ 814 (900-2¾)

HIRL Rwy 10-28	
REIL Rwys 5, 23 and 28	
MIRL Rwy 5-23	
FAF to MAP 4.7 NM	
Knots	60 90 120 150 180
Min:Sec	4:42 3:08 2:21 1:53 1:34

EC-2, 23 JAN 2025 to 20 FEB 2025

EC-2, 23 JAN 2025 to 20 FEB 2025