

NDB RWY 24

LAKEHURST MAXFIELD FLD,
(JOINT BASE MC GUIRE DIX LAKEHURST) (KNEL)

NDB NEL 396	APCH CRS 241°	Rwy Ldg 5002
		TDZE 101
		Arpt Elev 101

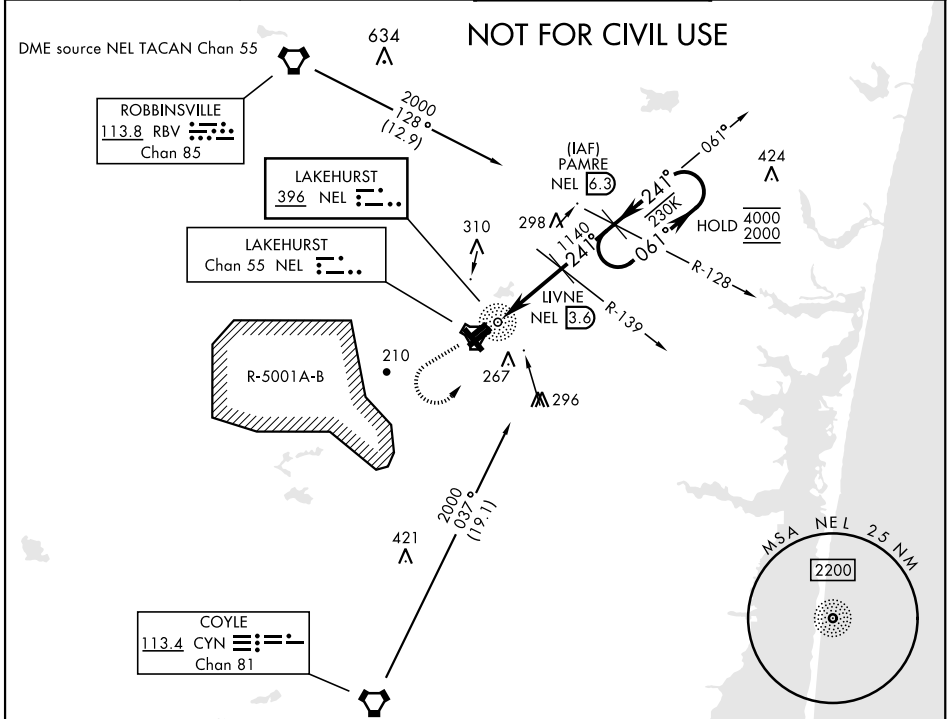
AL-223 [USN]

MISSED APPROACH: Climb to 700, then climbing left turn to 2000 and intercept NEL NDB 061° bearing to PAMRE and hold.

⚠ * When ALS inop, increase, CAT AB vis to 1 mile, CAT CD vis to 1¼ miles.



ATIS ★ 276.525	MC GUIRE APP CON 126.475 363.8	TOWER ★ 127.775 360.2	GND CON 118.375 307.375
--------------------------	--	---------------------------------	-----------------------------------



NE-2, 23 JAN 2025 to 20 FEB 2025

NE-2, 23 JAN 2025 to 20 FEB 2025

ELEV 101	TDZE 101
----------	----------

EMERG SAFE ALT 100 NM 4100

700	2000	PAMRE NEL 6.3
NEL 061° brg		

One Minute Holding Pattern

TACAN

NDB

LIVNE RBV R-139 NEL 3.9

PAMRE RBV R-128 NEL 6.3

061° → 4000

← 241° 2000

1140 3.00° TCH 51

0.4 2.7 NM 2.7 NM

CATEGORY	A	B	C	D
S-24 *	540-¾	439	(500-¾)	
CIRCLING	660-1 559 (600-1)	720-1 619 (700-1)	720-1¼ 619 (700-1¼)	720-2 619 (700-2)

HIRL Rwy 6-24

MIRL Rwy 063°-243°

FAF to MAP 5.4 NM

Knots	60	90	120	150	180
Min:Sec	5:24	3:36	2:42	2:10	1:48