

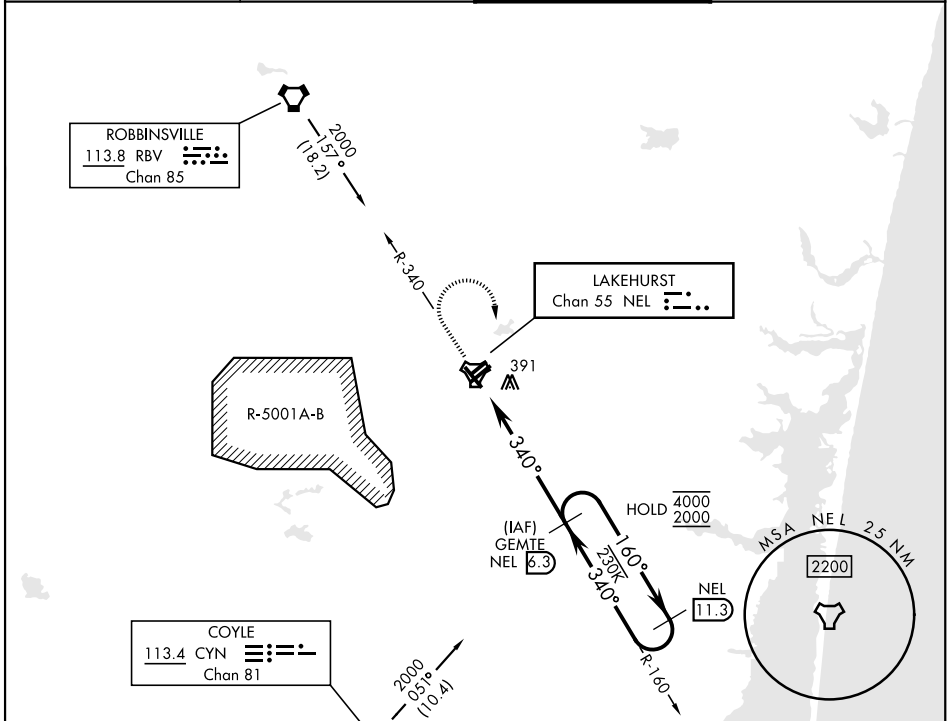
TACAN NEL Chan 55	APCH CRS 340°	Rwy Idg TDZE Arpt Elev	5001 88 101
----------------------	------------------	------------------------------	-------------------

AL-223 [USN]

(JOINT BASE MC GUIRE DIX LAKEHURST) (KNEL)

<b>ATIS ★</b> 276.525		<b>MC GUIRE APP CON</b> 126.475 363.8		<b>TOWER ★</b> 127.775 360.2		<b>GND CON</b> 118.375 307.375	
--------------------------	--	--	--	---------------------------------	--	-----------------------------------	--

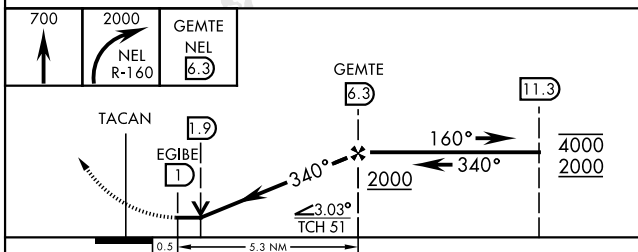
MISSED APPROACH: Climb to 700, then climbing right turn to 2000 to intercept NEL TACAN R-160 to GEMTE and hold.



NE-2, 23 JAN 2025 to 20 FEB 2025

NE-2, 23 JAN 2025 to 20 FEB 2025

EMERG SAFE ALT 100 NM 4100



CATEGORY	A	B	C	D
S-33	600-1 512 (500-1)		600-1 $\frac{3}{8}$ 512 (500-1 $\frac{3}{8}$ )	
CIRCLING	660-1 559 (600-1)	720-1 619 (700-1)	720-1 $\frac{3}{4}$ 619 (700-1 $\frac{3}{4}$ )	720-2 619 (700-2)

ELEV 101	TDZE 88
----------	---------

The diagram shows the runway layout at Lakehurst Maxfield Field. Runway 33 is the primary runway, with Runway 180 parallel to it. The diagram includes various navigation aids: Tower (TWR 180), Holding (H), Obstacle (O), and other markers. A 340° heading is indicated for the approach to Runway 33. The diagram also shows a 340° heading for the approach to Runway 180. A 340° heading is also indicated for the approach to Runway 33.