

LINCOLN, NEBRASKA

HI-VOR/DME or TACAN RWY 36

VORTAC LNK 116.1 Chan 108	APCH CRS 360°	Rwy ldg 12,901 TDZE 1175 Arprt Elev 1219
---	-------------------------	---

[USAF]

LINCOLN (KLNK)

RADAR required

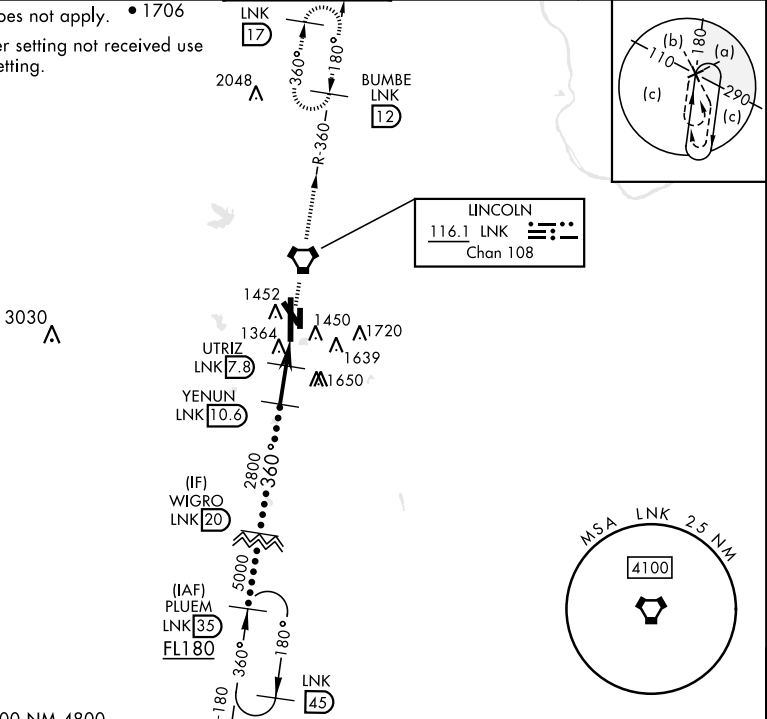


MISSED APPROACH: Climb to 3000 direct LNK VORTAC then via LNK R-360 to BUMBE 12 DME and hold.

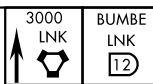
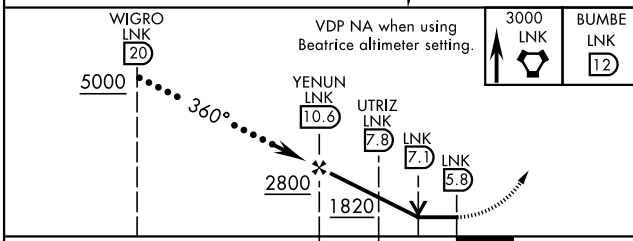
* When ALS inop, increase CAT E vis to 1 3/8 miles.
 ** When ALS inop, increase CAT CDE vis to 1 1/8 miles.

ATIS 118.05 290.9	OMAHA APP CON 124.0 270.3	TOWER * 118.5 253.5	GND CON 121.9 275.8	CLNC DEL 120.7 225.4
-----------------------------	-------------------------------------	-------------------------------	-------------------------------	--------------------------------

Inoperative table does not apply. • 1706
 When local altimeter setting not received use Beatrice altimeter setting.

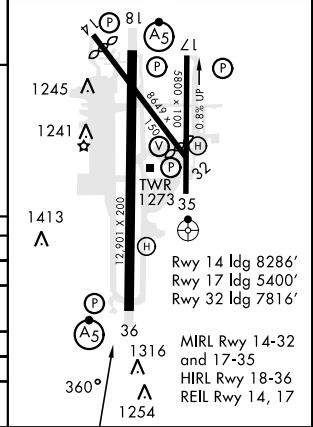


EMERG SAFE ALT 100 NM 4800



ELEV	1219	TDZE	1175
------	------	------	------

CATEGORY	C	D	E
S-36 *	1620-7/8	445	(500-7/8)
CIRCLING	1760-1 1/2 541 (600-1 1/2)	1820-2 601 (700-2)	2040-3 821 (900-3)
BEATRICE ALTIMETER SETTING			
S-36 **	1720-1 1/8	545	(600-1 1/8)
CIRCLING	1860-1 3/4 641 (700-1 3/4)	1920-2 1/4 701 (800-2 1/4)	2140-3 921 (1000-3)



LINCOLN, NEBRASKA

40°51'N-96°46'W

LINCOLN (KLNK)

Amtd 5 31OCT24

HI-VOR/DME or TACAN RWY 36

NC-2, 23 JAN 2025 to 20 FEB 2025

NC-2, 23 JAN 2025 to 20 FEB 2025