

LINCOLN, NEBRASKA

HI-VOR Z or TACAN RWY 18

VORTAC LNK 116.1 Chan 108	APCH CRS 185°	Rwy ldg 12,901 TDZE 1195 Arpt Elev 1219
---	-------------------------	--

[USAF]

LINCOLN (KLNK)

DME, RADAR required.

MALSR



MISSED APPROACH: Climb to 3300 via LNK VORTAC R-185 to JOGAN 14 DME and hold.

ATIS 118.05 290.9	OMAHA APP CON 124.0 270.3	TOWER★ 118.5 253.5	GND CON 121.9 275.8	CLNC DEL 120.7 225.4
-----------------------------	-------------------------------------	------------------------------	-------------------------------	--------------------------------

Inoperative table does not apply.

When local altimeter setting not received use Beatrice altimeter setting.

1706

▲ 2048

(IF) QIRQU LNK 10

WETOS LNK 2

HUMSI LNK 1

LINCOLN
116.1 LNK
Chan 108

▲ 3030

▲ 1452

▲ 1450

▲ 1639

▲ 1720

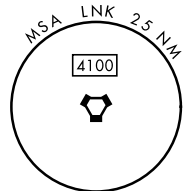
JOGAN LNK 14

▲ 1455

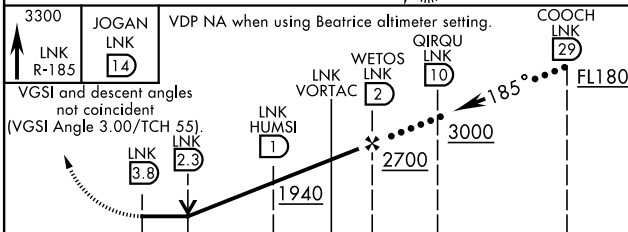
▲ 1650

R-185

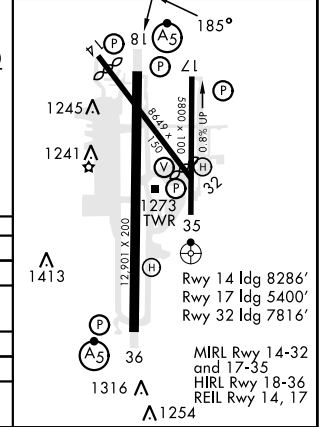
LNK 19



EMERG SAFE ALT 100 NM 4800



ELEV	1219	TDZE	1195
------	------	------	------



CATEGORY	C	D	E
S-18	1720-1½	525	(600-1½)
CIRCLING	1760-1½ 541 (600-1½)	1820-2 601 (700-2)	2040-3 821 (900-3)
BEATRICE ALTIMETER SETTING			
S-18	1820-1¾	625	(700-1¾)
CIRCLING	1860-1¾ 641 (700-1¾)	1920-2¼ 701 (800-2¼)	2140-3 921 (1000-3)

LINCOLN, NEBRASKA

40°51'N-96°46'W

LINCOLN (KLNK)

Amdt 5A 31OCT24

HI-VOR Z or TACAN RWY 18

NC-2, 23 JAN 2025 to 20 FEB 2025

NC-2, 23 JAN 2025 to 20 FEB 2025