


LOC I-OCZ <b>111.1</b>	APP CRS <b>177°</b>	Rwy Idg <b>12901</b> TDZE <b>1195</b> Apt Elev <b>1219</b>
---------------------------	------------------------	--

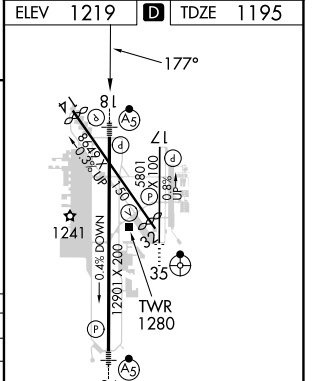
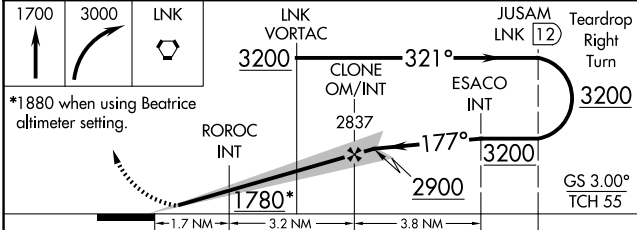
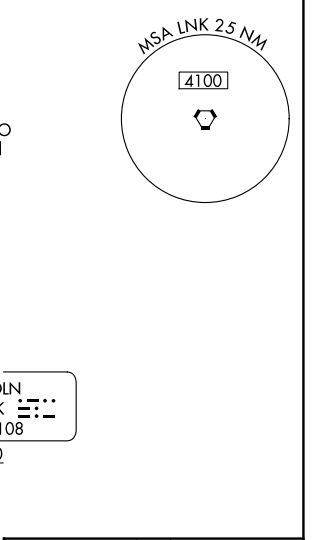
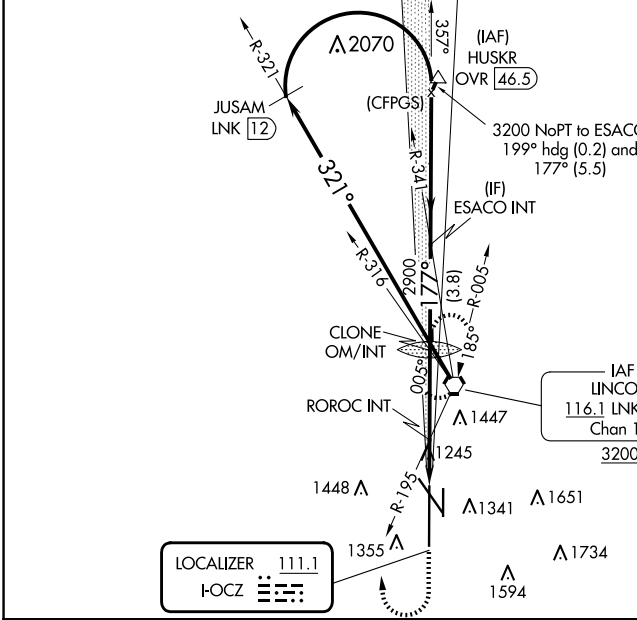
# ILS Y or LOC Y RWY 18

LINCOLN (LNK)

**⚠** When local altimeter setting not received use Beatrice altimeter setting and increase DA to 1486; and all MDA 100 feet, increase visibility S-LOC 18 Cat C, D, E and Circling Cats C and D ¼ SM; increase ROROC fix minimums S-LOC 18 Cat C/D/E visibility ⅓ SM and Circling Cats C and D ¼ SM. For inop ALS, increase S-ILS 18 Cat E visibility to RVR 4000, S-LOC 18 Cat E visibility to 1 ¼ SM, and ROROC fix minimums S-LOC 18 Cat E visibility to 1 ½ SM. For inop ALS when using Beatrice altimeter setting, increase S-ILS 18 all Cats visibility to RVR 4500, S-LOC 18 Cat E visibility to 2 SM, and ROROC fix minimums S-LOC 18 Cat C/D/E visibility to 1 ¼ SM.  
#RVR 1800 authorized with use of FD or AP or HUD to DA.

**MALS**  
  
**MISSED APPROACH:**  
 Climb to 1700 then climbing right turn to 3000 direct LNK VORTAC and hold.

ATIS <b>118.05 290.9</b>	OMAHA APP CON <b>124.0 270.3</b>	<b>LINCOLN TOWER *</b> <b>118.5(CTAF) 253.5</b>	GND CON <b>121.9 275.8</b>	CLNC DEL <b>120.7 225.4</b>	UNICOM <b>122.95</b>
-----------------------------	-------------------------------------	--	-------------------------------	--------------------------------	-------------------------



CATEGORY	A	B	C	D	E
S-ILS 18#	1395/24 200 (200-½)				
S-LOC 18	1780/24	585 (600-½)	1780-1 ¼		585 (600-1 ¼)
CIRCLING	1780-1	561 (600-1)	1820-1 ¾	1960-2 ½	2040-3
ROROC FIX MINIMUMS (DUAL VOR RECEIVERS REQUIRED)					
S-LOC 18	1720/24	525 (600-½)	1720/55		525 (600-1)
CIRCLING	1720-1	1760-1	1820-1 ½	1960-2 ¼	2040-3
	501 (600-1)	541 (600-1)	601 (700-1 ½)	741 (800-2 ¼)	821 (900-3)

HIRL Rwy 18-36  
REIL Rwys 14 and 17  
MIRL Rwys 14-32 and 17-35

FAF to MAP 4.9 NM

Knots	60	90	120	150	180
Min:Sec	4:54	3:16	2:27	1:58	1:38

NC-2, 23 JAN 2025 to 20 FEB 2025

NC-2, 23 JAN 2025 to 20 FEB 2025