

LOC/DME I-LIT <b>110.3</b> Chan <b>40</b>	APP CRS <b>047°</b>	Rwy Idg <b>7976</b> TDZE <b>258</b> Apt Elev <b>266</b>
---	------------------------	---

# ILS or LOC RWY 4L

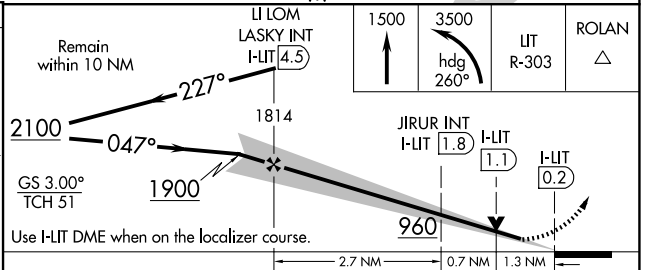
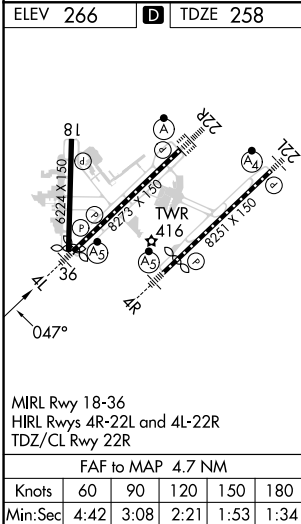
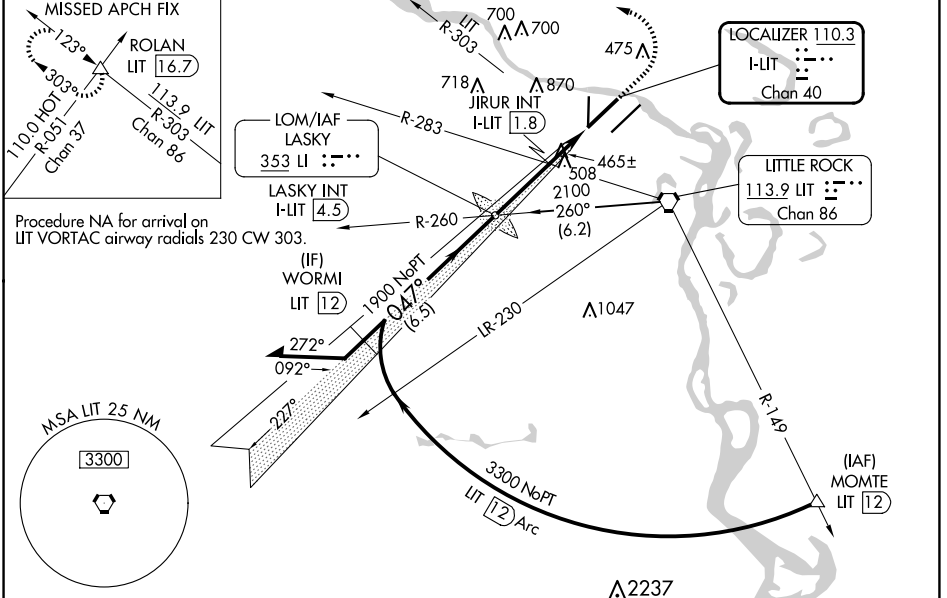
BILL AND HILLARY CLINTON NTL/ADAMS FLD (LIT)

**⚠** Simultaneous approach authorized. Rwy 4L helicopter visibility reduction below RVR 4000 NA. Inop table does not apply to S-ILS 4L all Cats. LOC minimums: For inop ALS, increase S-LOC 4L Cats A/B visibility to 1 SM and Cats C/D visibility to 2 SM. JIRUR fix minimums: For inop ALS, increase S-LOC 4L Cats A/B visibility to 1 SM and Cats C/D visibility to 1 1/2 SM.

**MALSR**  
AS

**MISSED APPROACH:** Climb to 1500 then climbing left turn to 3500 on heading 260° and on LT VORTAC R-303 to ROLAN INT/LIT 16.7 DME and hold.

D-ATIS <b>125.65</b>	LITTLE ROCK APP CON <b>135.4 353.6</b>	ADAMS TOWER <b>118.7 257.8</b>	GND CON <b>121.9 339.8</b>	CLNC DEL <b>118.95</b>
-------------------------	---	-----------------------------------	-------------------------------	---------------------------



CATEGORY	A	B	C	D
S-ILS 4L	508/40 250 (300-3/4)			
S-LOC 4L	960/40	702 (700-3/4)	960-1 5/8	702 (700-1 5/8)
<b>C</b> CIRCLING	960-1 694 (700-1)	1000-1 734 (800-1)	1180-2 3/4 914 (1000-2 3/4)	1180-3 914 (1000-3)
JIRUR FIX MINIMUMS (DUAL VOR RECEIVERS OR DME REQUIRED)				
S-LOC 4L	720/40	462 (500-3/4)	720/50	462 (500-1)
<b>C</b> CIRCLING	820-1 554 (600-1)	1000-1 734 (800-1)	1180-2 3/4 914 (1000-2 3/4)	1180-3 914 (1000-3)

LITTLE ROCK, ARKANSAS					
Amdt 26C 08SEP22					

34°44'N-92°13'W

# ILS or LOC RWY 4L

SC-1, 23 JAN 2025 to 20 FEB 2025

SC-1, 23 JAN 2025 to 20 FEB 2025