

| | | |
|--|------------------------|---|
| LOC/DME I-CNL 111.3 Chan 50 | APP CRS 047° | Rwy Ldg 7200 TDZE 260 Apt Elev 266 |
|--|------------------------|---|

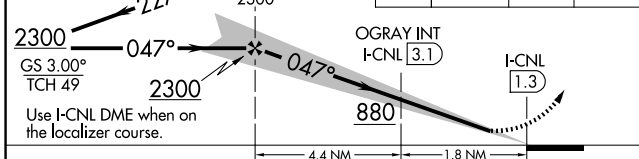
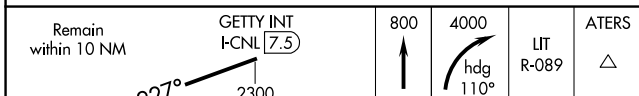
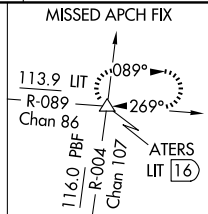
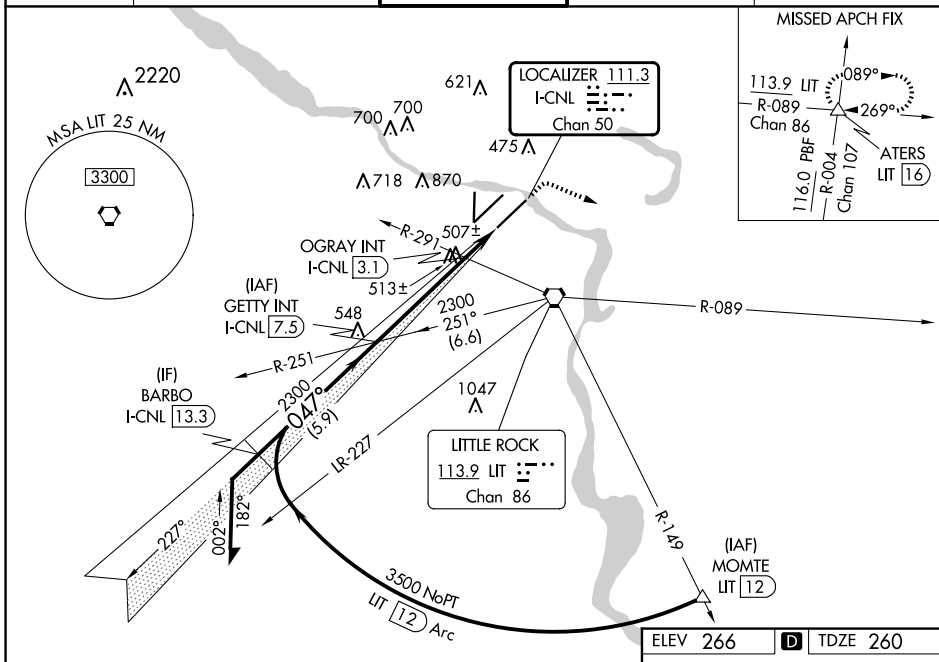
ILS or LOC RWY 4R
BILL AND HILLARY CLINTON NTL/ADAMS FLD (LIT)

▼ Rwy 4R helicopter visibility reduction below RVR 4000 NA. Simultaneous approach authorized. For inop ALS, increase S-ILS 4R all Cats visibility to RVR 4500. For inop ALS, increase S-LOC 4R Cats A/B visibility to RVR 5500 and Cats C/D visibility to 1 1/4 SM. OGRAY Fix Minimums: For inop ALS, increase S-LOC 4R Cats A/B visibility to RVR 5500 and Cats C/D to 1 1/4 SM.



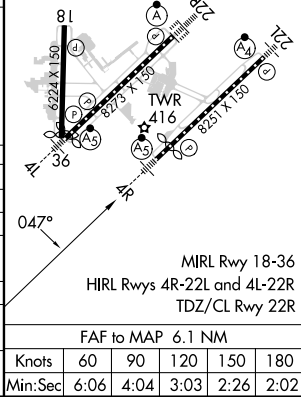
MISSED APPROACH: Climb to 800 then climbing right turn to 4000 on heading 110° and LIT VORTAC R-089 to ATERS INT/LIT 16 DME and hold.

| | | | | |
|-------------------------|---|-----------------------------------|-------------------------------|---------------------------|
| D-ATIS 125.65 | LITTLE ROCK APP CON 135.4 353.6 | ADAMS TOWER 118.7 257.8 | GND CON 121.9 339.8 | CLNC DEL 118.95 |
|-------------------------|---|-----------------------------------|-------------------------------|---------------------------|



| | |
|----------|-------------------|
| ELEV 266 | D TDZE 260 |
|----------|-------------------|

| CATEGORY | A | B | C | D |
|--|----------------------|-----------------------|--------------------------------|------------------------|
| S-ILS 4R | 523/40 263 (300-3/4) | | | |
| S-LOC 4R | 880/40 | 620 (700-3/4) | 880-1 3/8 | 620 (700-1 1/4) |
| C CIRCLING | 880-1 614 (700-1) | 1000-1 734 (800-1) | 1180-2 3/4 914 (1000-2 3/4) | 1180-3 914 (1000-3) |
| OGRAY (DUAL VOR RECEIVERS OR DME REQUIRED) | | | | |
| S-LOC 4R | 780/40 | 520 (600-3/4) | 780/55 | 520 (600-1) |
| C CIRCLING | 820-1 554 (600-1) | 1000-1 734 (800-1) | 1180-2 3/4 914 (1000-2 3/4) | 1180-3 914 (1000-3) |



SC-1, 23 JAN 2025 to 20 FEB 2025

SC-1, 23 JAN 2025 to 20 FEB 2025

MIRL Rwy 18-36
HIRL Rwys 4R-22L and 4L-22R
TDZ/CL Rwy 22R

| | | | | | |
|-------------------|------|------|------|------|------|
| FAF to MAP 6.1 NM | | | | | |
| Knots | 60 | 90 | 120 | 150 | 180 |
| Min:Sec | 6:06 | 4:04 | 3:03 | 2:26 | 2:02 |