

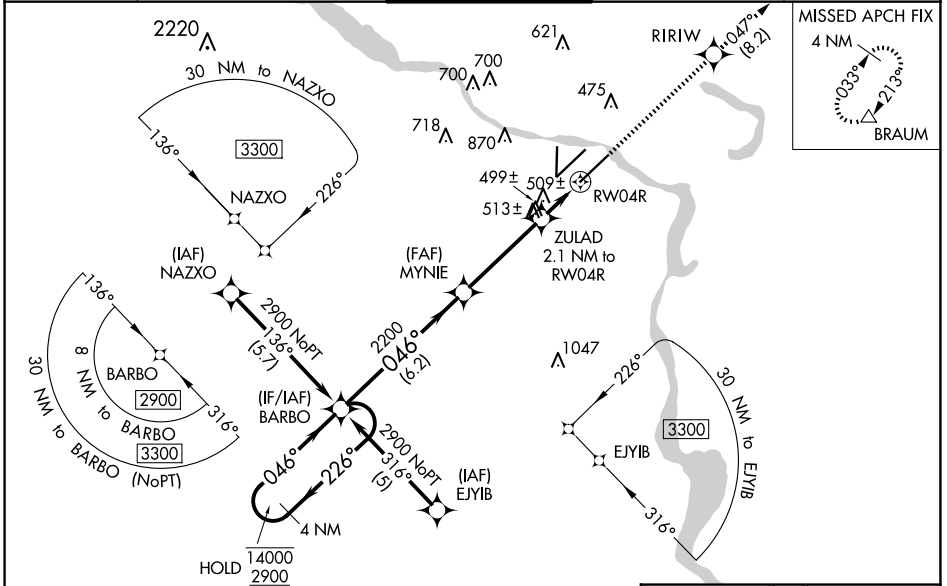
WAAS CH 70611 W04B	APP CRS 046°	Rwy Idg 7200 TDZE 260 Apt Elev 266
--	------------------------	---

RNAV (GPS) RWY 4R

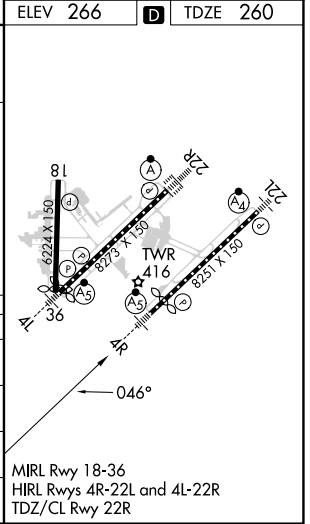
BILL AND HILLARY CLINTON NTL/ADAMS FLD (LIT)

RNP APCH-GPS.	MALSR	MISSED APPROACH: Climb to 2900 direct RIRIW and on track 047° to BRAUM and hold.
<p>▼ Rwy 4R helicopter visibility reduction below RVR 4000 NA. For uncompensated Baro-VNAV systems, LNAV/VNAV NA below -15°C or above 54°C. ⚠ Simultaneous approach authorized. LNAV procedure NA during simultaneous operations. Use of FD or AP required during simultaneous operations. For inop ALS, increase LPV all Cats visibility to RVR 4500, LNAV/VNAV all Cats visibility to 1½ SM and LNAV Cat A/B visibility to RVR 5500 and Cat C/D to 1½ SM.</p>		

D-ATIS 125.65	LITTLE ROCK APP CON 135.4 353.6	ADAMS TOWER 118.7 257.8	GND CON 121.9 339.8	CLNC DEL 118.95
-------------------------	---	-----------------------------------	-------------------------------	---------------------------



4 NM Holding Pattern BARBO		ELEV 266		D TDZE 260	
<p>14000 ← 226°</p> <p>2900 → 046°</p> <p>GP 3.00° TCH 49</p>		<p>2900 RIRIW</p> <p>tr 047°</p> <p>BRAUM</p>		<p>4 NM Holding Pattern BARBO</p> <p>2220 MYNIE</p> <p>ZULAD 2.1 NM to RW04R</p> <p>1.4 NM to RW04R</p> <p>960 RW04R</p>	
CATEGORY	A	B	C	D	
LPV DA		574/40	314 (400-¾)		
LNAV/VNAV DA		756/50	496 (500-1)		
LNAV MDA	760/40	500 (500-¾)	760/50	500 (500-1)	
CIRCLING	820-1 554 (600-1)	1000-1 734 (800-1)	1180-2¾ 914 (1000-2¾)	1180-3 914 (1000-3)	



SC-1, 23 JAN 2025 to 20 FEB 2025

SC-1, 23 JAN 2025 to 20 FEB 2025