

EMMLN ONE ARRIVAL
(APLES,EMMLN1) 03NOV22

(APLES,EMMLN1) 23334
EMMLN ONE ARRIVAL

AL-236 (FAA)

LONG BEACH, CALIFORNIA

SOCAL APP CON
127.0 318.2
FUL ATIS
125.05
HHR ATIS
118.4
KSLI ATIS*
118.875 379.975
LGB ATIS
127.75
SNA D-ATIS
126.0

PALMDALE
115.55 PMD
Chan 102(Y)

EDWARDS
116.4 EDW
Chan 111

VICTORVILLE
109.05 VCV
Chan 27(Y)

DAGGETT
113.2 DAG
Chan 79

BASAL
10000

HECTOR
112.7 HEC
Chan 74

POMONA
110.4 POM
Chan 41

RNDAL
6000
Ldg KHHR

PARADISE
112.2 PDZ
Chan 59
6000

Ldg KLGB/KFUL/KSLI/KSNA

SEAL BEACH
115.7 SLI
Chan 104
6000

JACK NORTHROP FIELD/HAWTHORNE MUNI

LONG BEACH (DAUGHERTY FLD)

FULLERTON MUNI

LOS ALAMITOS AAF

DOWDD
6000

AHEIM
6000

POXKU
6000

EMMLN

RRIZE
8100

EMMLN

CAPTZ
10000

APLES
10000

GILLM

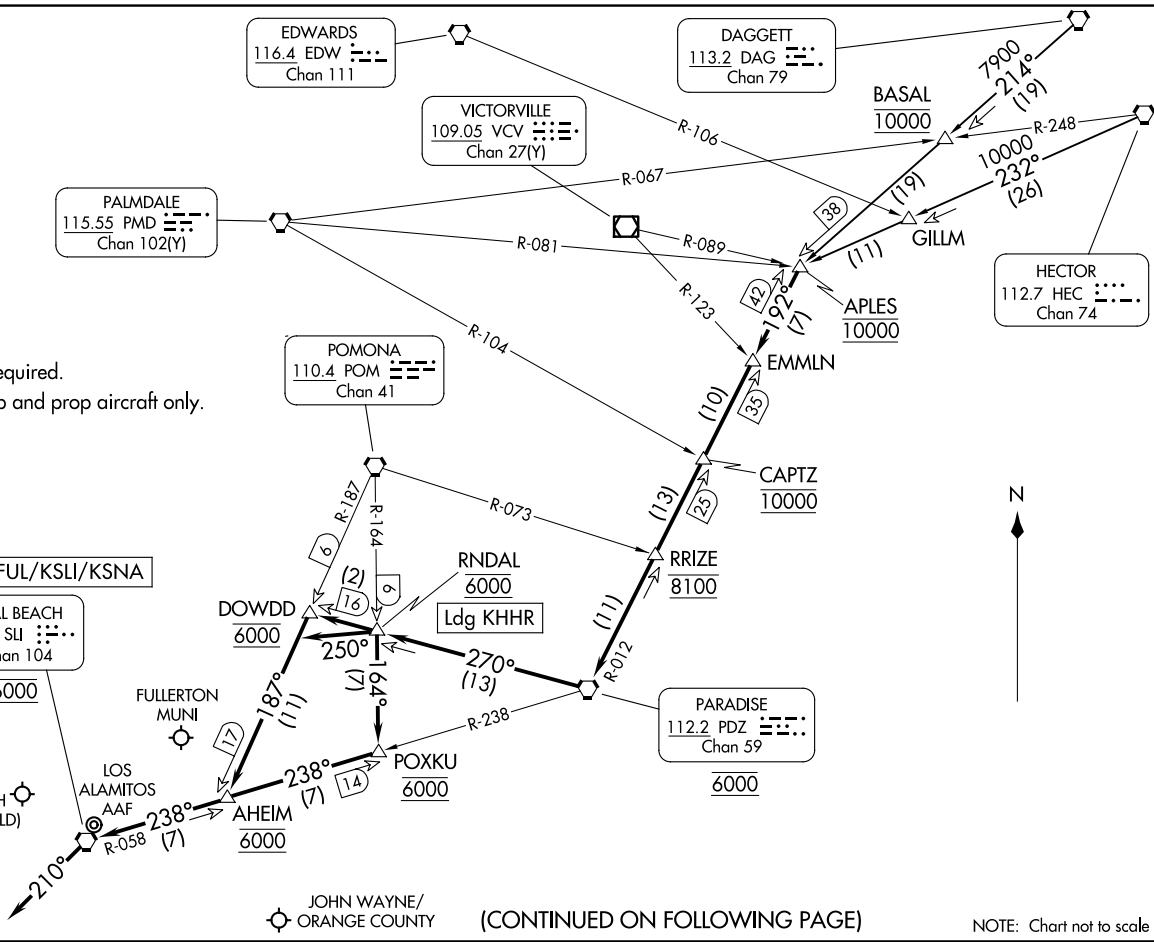
JOHN WAYNE/
ORANGE COUNTY

(CONTINUED ON FOLLOWING PAGE)

NOTE: Chart not to scale

LONG BEACH, CALIFORNIA

NOTE: RADAR required.
NOTE: Turboprop and prop aircraft only.



ARRIVAL ROUTE DESCRIPTION

DAGGETT TRANSITION (DAG.EMMLN1): From over DAG VORTAC on DAG R-214 to APLES. Thence. . . .

HECTOR TRANSITION (HEC.EMMLN1): From over HEC VORTAC on HEC R-232 to APLES. Thence. . . .

LANDING KLGB/KFUL/KSLI: From over APLES on PARADISE VORTAC (PDZ) R-012 to cross CAPTZ at 10000, then on PDZ R-012 to cross RRIZE at 8100, then on PDZ R-012 to cross PDZ VORTAC at 6000, then on PDZ R-270 to cross DOWDD at 6000, then on POMONA VORTAC (POM) R-187 to cross AHEIM at 6000, then on SEAL BEACH VORTAC (SLI) R-058 to cross SLI VORTAC at 6000.

LANDING KLGB: From over SLI VORTAC, fly heading 210°, expect RADAR vectors to final approach course.

LANDING KFUL: From over SLI VORTAC, expect VOR-A approach.

LANDING KSLI: From over SLI VORTAC, expect VOR or TACAN RWY 22L approach or RADAR vectors to final approach course.

LANDING KHRH: From over APLES on PARADISE VORTAC (PDZ) R-012 to cross CAPTZ at 10000, then on PDZ R-012 to cross RRIZE at 8100, then on PDZ R-012 to cross PDZ VORTAC at 6000, then on PDZ R-270 to cross RNDAL at 6000, then fly heading 250°. Expect RADAR vectors to final approach course.

LANDING KSNA: From over APLES on PARADISE VORTAC (PDZ) R-012 to cross CAPTZ at 10000, then on PDZ R-012 to cross RRIZE at 8100, then on PDZ R-012 to cross PDZ VORTAC at 6000, then on PDZ R-270 to cross RNDAL at 6000, then on POM R-164 to cross POXKU at 6000, then on SLI R-058 to cross SLI VORTAC at 6000. Expect RADAR vectors to final approach course.

SW-3, 23 JAN 2025 to 20 FEB 2025

SW-3, 23 JAN 2025 to 20 FEB 2025