

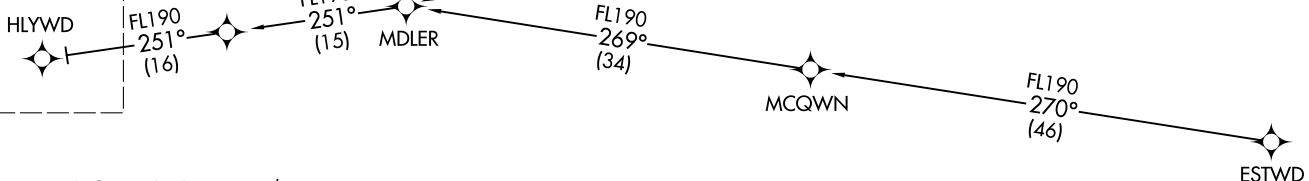
BRUEN TWO ARRIVAL (RNAV) (HLYWD, BRUEN2) 120CT17

Transition Routes

LOS ANGELES, CALIFORNIA
LOS ANGELES INTL (LAX)

SOCAL APP CON
124.05 353.775
D-ATIS ARR
133.8
LOS ANGELES TOWER
(N) 133.9 239.3
(S) 120.95 379.1

See following page for arrival routes.



- NOTE: RADAR required.
- NOTE: RNAV 1.
- NOTE: DME/DME/IRU or GPS required.
- NOTE: Turbojet aircraft only.
- NOTE: Los Angeles landing east traffic.
- NOTE: Expect runway 7R unless otherwise assigned.
- NOTE: Expect local area altimeter reaching FL230.
- NOTE: MDLER transition ATC only, do not file.

NOTE: Chart not to scale.

(CONTINUED ON FOLLOWING PAGE)

ESTWD TRANSITION (ESTWD.BRUEN2)
FNND TRANSITION (FNND.BRUEN2)
GABBL TRANSITION (GABBL.BRUEN2)
MDLER TRANSITION (MDLER.BRUEN2)

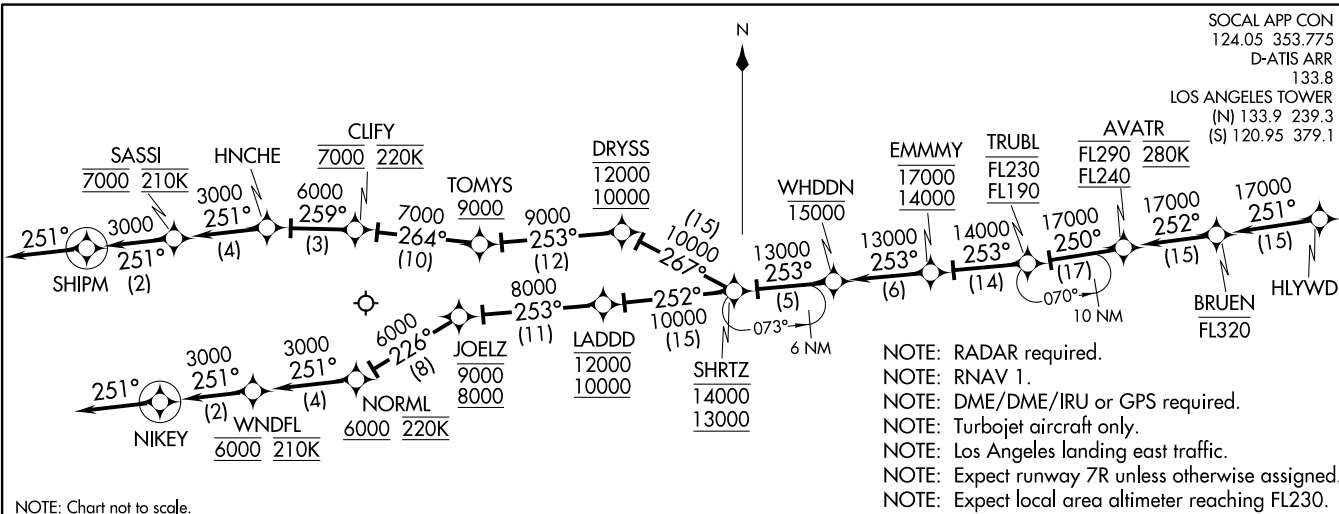
BRUEN TWO ARRIVAL (RNAV) 17285

Transition Routes

LOS ANGELES INTL (LAX)
LOS ANGELES, CALIFORNIA

BRUEN TWO ARRIVAL (RNAV) Arrival Routes
(HLYW.D:BRUEN2) 120CT17

BRUEN TWO ARRIVAL (RNAV) Arrival Routes
(HLYW.D:BRUEN2) 1728S
AL-237 (FAA)



ARRIVAL ROUTE DESCRIPTION

From HLYW.D on track 251° to cross BRUEN at or below FL320, then on track 252° to cross AVATR between FL240 and FL290 and at 280K, then on track 250° to cross TRUBL between FL190 and FL230, then on track 253° to cross EMMMY between 14000 and 17000, then on track 253° to cross WHDDN at or below 15000, then on track 253° to cross SHRTZ between 13000 and 14000.

LANDING RUNWAYS 6L/R: From SHRTZ on track 267° to cross DRYSS between 10000 and 12000, then on track 253° to cross TOMYS at or above 9000, then on track 264° to cross CLIFY at 7000 and at 220K, then on track 259° to HNCHE, then on track 251° to cross SASSI at 7000 and at 210K, then on track 251° to SHIPM, then on track 251°. Expect RADAR vectors to ILS or RNAV (RNP) RWY 6L final approach course.

LANDING RUNWAYS 7L/R: From SHRTZ on track 252° to cross LADDD between 10000 and 12000, then on track 253° to cross JOELZ between 8000 and 9000, then on track 226° to cross NORML at or above 6000 and at 220K, then on track 251° to cross WNDFL at 6000 and at 210K, then on track 251° to NIKEY, then on track 251°. Expect RADAR vectors to ILS or RNAV (RNP) RWY 7R final approach course.

LOST COMMUNICATIONS: In the event of lost communication proceed on the RNAV (RNP) RWY 7R or ILS or LOC RWY 7R approach.

LOS ANGELES, CALIFORNIA
LOS ANGELES INTL (LAX)

LOS ANGELES INTL (LAX)
LOS ANGELES, CALIFORNIA