

(GOATZ .GOATZ2) 24361

GOATZ TWO ARRIVAL (RNAV)

AL-237 (FAA)

LOS ANGELES INTL (LAX)

LOS ANGELES, CALIFORNIA

SOCAL APP CON
 127.4 263.025
 LAX D-ATIS
 133.8
 SMO ATIS
 119.15
 LOS ANGELES TOWER
 133.9 239.3 (N)
 120.95 379.1 (S)

RNAV 1 - GPS.

RADAR required.



TRNDO
5000 210K
 Ldg Rwy 25L

ARRIVAL ROUTE DESCRIPTION

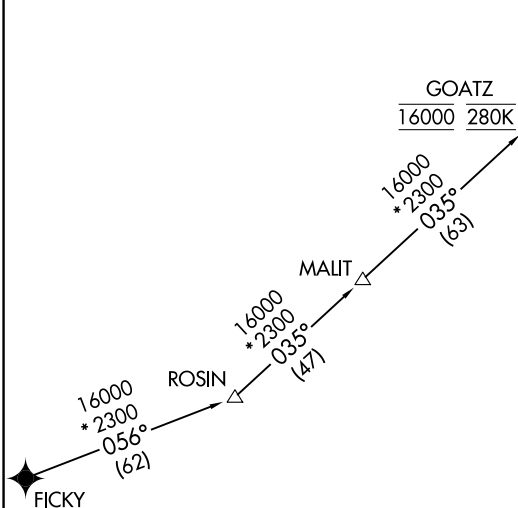
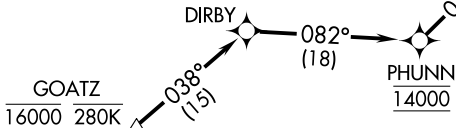
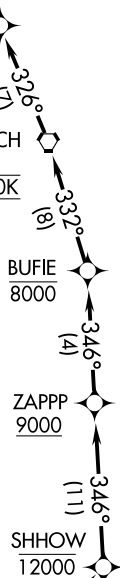
FICKY TRANSITION (FICKY.GOATZ2)

From GOATZ on track 038° to DIRBY, then on track 082° to cross PHUNN at 14000, then on track 034° to cross SHHOW at 12000, then on track 346° to cross ZAPPP at or above 9000, then on track 346° to cross BUFIE at or below 8000, then on track 332° to cross SLI VORTAC at 7000 and at 210K, then on track 326° to cross TRNDO at 5000 and at 210K. Expect ILS or LOC RWY 25L or RNAV (RNP) Z RWY 25L.

LOST COMMUNICATIONS

Proceed from TRNDO to Rwy 25L via RNAV (RNP) Z Rwy 25L, or ILS or LOC RWY 25L procedure.

SEAL BEACH
 SLI
7000 210K



NOTE: Jet aircraft only.
 NOTE: Expect Rwy 25L unless otherwise assigned by ATC.
 NOTE: GPS required.

NOTE: Chart not to scale.

SW-3, 23 JAN 2025 to 20 FEB 2025

SW-3, 23 JAN 2025 to 20 FEB 2025

GOATZ TWO ARRIVAL (RNAV)

(GOATZ .GOATZ2) 26DEC24

LOS ANGELES, CALIFORNIA
LOS ANGELES INTL (LAX)