

LOC/DME I-OSS <b>108.5</b> Chan <b>22</b>	APP CRS <b>251°</b>	Rwy Idg <b>8926</b> TDZE <b>122</b> Apt Elev <b>128</b>
---	------------------------	---

# ILS RWY 24R (CAT II & III)

LOS ANGELES INTL (LAX)

From CRUCS, SEAVU: RNAV 1-GPS required. DME or RADAR required.

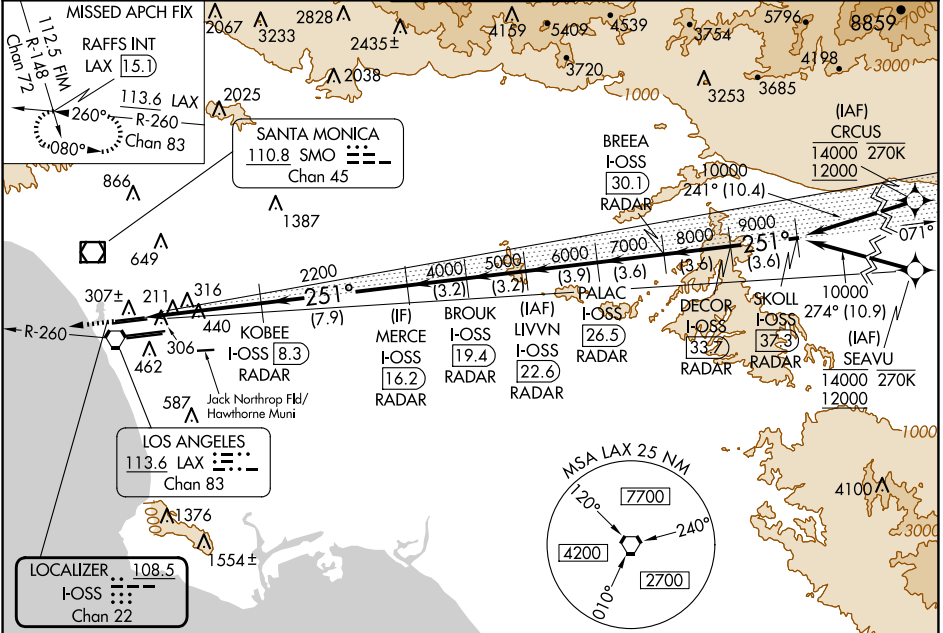
ALSF-2



Simultaneous approach authorized with HHR.  
Simultaneous approach authorized.

MISSED APPROACH: Climb to 2000 on heading 251° and LAX VORTAC R-260 to RAFFS INT/LAX 15.1 DME and hold.

D-ATIS ARR <b>133.8</b> DEP <b>135.65</b>	SOCAL APP CON <b>124.3 363.2</b> ARR (APCH FM WEST) <b>124.5 235.975</b> [225°-044°]	<b>124.9 269.0</b> (090°-224°) <b>128.5 360.7</b> (045°-089°)	LOS ANGELES TOWER <b>N 133.9 239.3</b> <b>S 120.95 379.1</b>	GND CON <b>N 121.65 327.0</b> <b>S 121.75 327.0</b> <b>W 121.4 327.0</b>	CLNC DEL <b>120.35</b> <b>327.0</b>	CPDLC
---	---	--	--	---	---	-------



SW-3, 23 JAN 2025 to 20 FEB 2025

SW-3, 23 JAN 2025 to 20 FEB 2025

ELEV 128	TDZE 122	2000 ↑ hdg 251°	LAX R-260	RAFFS INT	VGSI and ILS glidepath not coincident (VGSI Angle 3.00/TCH 73).	DECOR I-OSS 33.7	SKOLL I-OSS 37.3				
		KOBEE I-OSS 8.3		MERCE I-OSS 16.2	BROOK I-OSS 19.4	LIVVN I-OSS 22.6	PALAC I-OSS 26.5	BREA I-OSS 30.1	RAFFS INT 25.1	10000	
		2200		4000	5000	6000	7000	8000	9000	GS 3.00°	
		10227		6.4 NM	7.9 NM	3.2 NM	3.2 NM	3.9 NM	3.6 NM	3.6 NM	TCH 55
CATEGORY	A	B	C	D							
S-ILS 24R					CAT II RA 118/12 100 DA 222						
S-ILS 24R					CAT III RVR 06						

TDZ/CL Rwy 6L, 7R, 24R, and 25L  
HIRL all Rwy

## CATEGORY II & III ILS - SPECIAL AIRCREW & AIRCRAFT CERTIFICATION REQUIRED