

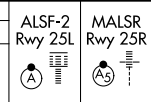
LOC/DME I-LAX	APP CRS	Rwy ldg	25L	25R
109.9	251°	11095	11134	
Chan 36		TDZE	104	104
		Apt Elev	128	128

ILS or LOC RWY 25L

LOS ANGELES INTL (LAX)

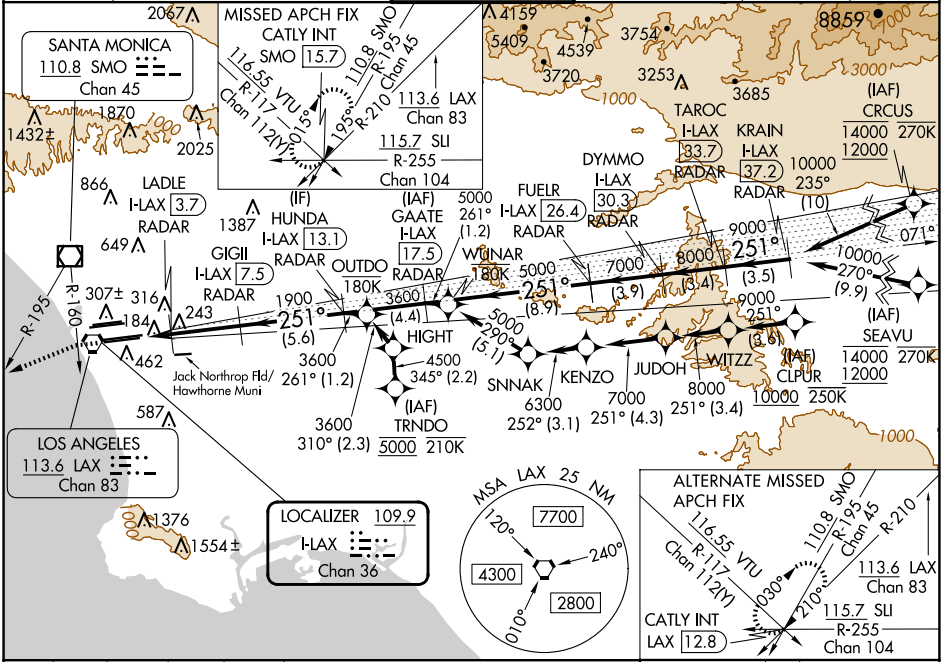
RNP APCH - GPS. From CLIPUR or CRUCU or SEAVU or TRNDO. DME or RADAR required.

Simultaneous approach authorized. Simultaneous approach authorized with HHR.



MISSED APPROACH: Climb to 2000 on heading 251° until crossing the SMO R-160, then left turn on heading 236° and on the SMO R-195 to CATLY INT/SMO 15.7 DME and hold.

D-ATIS	SOCAL APP CON	LOS ANGELES TOWER	GND CON	CLNC DEL	CPDLC
ARR 133.8	124.3 363.2 (APCH FM WEST)	124.9 269.0 (090°-224°)	N 121.65 327.0 S 121.75 327.0 W 121.4 327.0	120.35 327.0	
DEP 135.65	124.5 235.975 (225°-044°)	128.5 360.7 (045°-089°)			



2000	SMO	SMO	CATLY	TAROC	KRAIN
hdg 251°	R-160	R-195	INT	I-LAX	I-LAX
				33.7	37.2
				RADAR	RADAR
	LADLE	GIGLI	HUNDA	FUEL	DYMMO
	I-LAX 3.7	I-LAX 7.5	I-LAX 13.1	I-LAX 17.5	I-LAX 26.4
	RADAR	RADAR	RADAR	RADAR	RADAR
					25.1
					10000
					9000
					7000
					8000
					5000
					3600
					1900
					700
					1900
					3600
					5000
					7000
					8000
					10000
					GS 3.00°
					TCH 54
					1 NM 0.8
					3.7 NM
					5.6 NM
					4.4 NM
					8.9 NM
					3.9 NM
					3.4 NM
					3.5 NM
CATEGORY	A	B	C	D	
S-ILS 25L	304/18		200 (200-1/2)		
S-LOC 25L	480/24		376 (400-1/2)		
			480/35		376 (400-3/4)
SIDESTEP 25R	480/55		376 (400-1)		
					480-1 1/2
					376 (400-1 1/2)

ELEV 128	TDZE 25L 104	TDZE 25R 104			
TDZ/CL Rwy's 6R, 7L, 24R, and 25L HIRL all Rwy's					
FAF to MAP 5.5 NM					
Knots	60	90	120	150	180
Min:Sec	5:30	3:40	2:45	2:12	1:50

SW-3, 23 JAN 2025 to 20 FEB 2025

SW-3, 23 JAN 2025 to 20 FEB 2025