

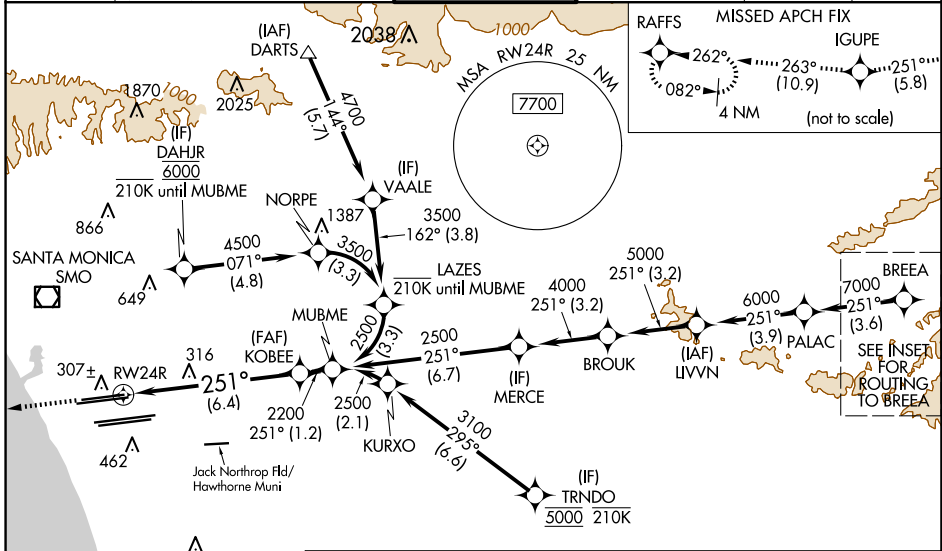
APP CRS	Rwy Idg	<b>8926</b>
<b>251°</b>	TDZE	<b>122</b>
	Apt Elev	<b>128</b>

# RNAV (RNP) Z RWY 24R

LOS ANGELES INTL (LAX)

RNP AR APCH-GPS.		ALSF-2	MISSED APPROACH: Climb to 2000 on track 251° to IGUPE and track 263° to RAFFS and hold.
<p>▼ Simultaneous approach authorized with HHR. For uncompensated Baro-VNAV systems, procedure NA below 5°C or above 54°C. For inop ALS, increase RNP 0.15 all Cats visibility to RVR 6000 and RNP 0.30 all Cats visibility to 1½ SM. Simultaneous approach authorized.</p>			

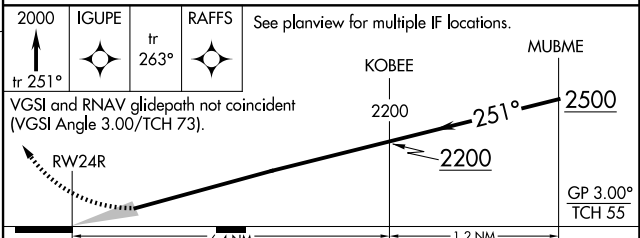
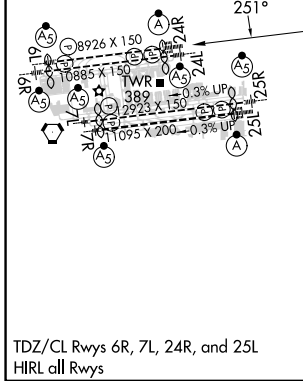
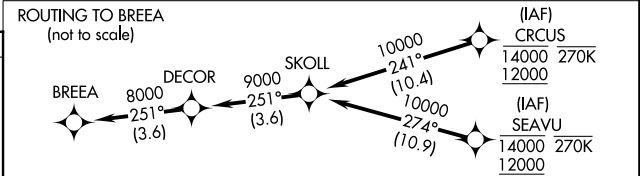
D-ATIS	SOCAL APP CON		LOS ANGELES TOWER	GND CON	CLNC DEL	CPDLC
ARR <b>133.8</b>	<b>124.3 363.2</b>	<b>124.9 269.0</b>	<b>N 133.9 239.3</b>	<b>N 121.65 327.0</b>	<b>120.35</b>	
DEF <b>135.65</b>	<b>124.5 235.975</b>	<b>128.5 360.7</b>	<b>S 120.95 379.1</b>	<b>S 121.75 327.0</b>	<b>327.0</b>	
	(225°-044°)	(090°-224°)		<b>W 121.4 327.0</b>		
		(045°-089°)				



SW-3, 23 JAN 2025 to 20 FEB 2025

SW-3, 23 JAN 2025 to 20 FEB 2025

ELEV 128	<b>D</b>	TDZE 122
----------	----------	----------



CATEGORY	A	B	C	D
RNP 0.15 DA		484/40	362 (400-¾)	
RNP 0.30 DA		586/60	464 (500-1½)	

**AUTHORIZATION REQUIRED**