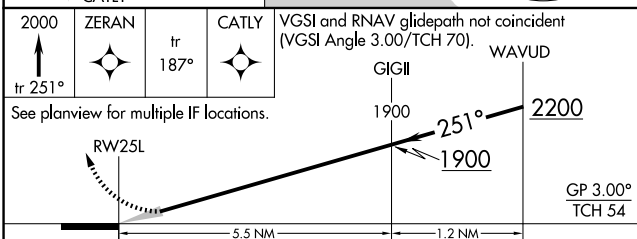
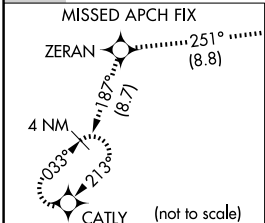
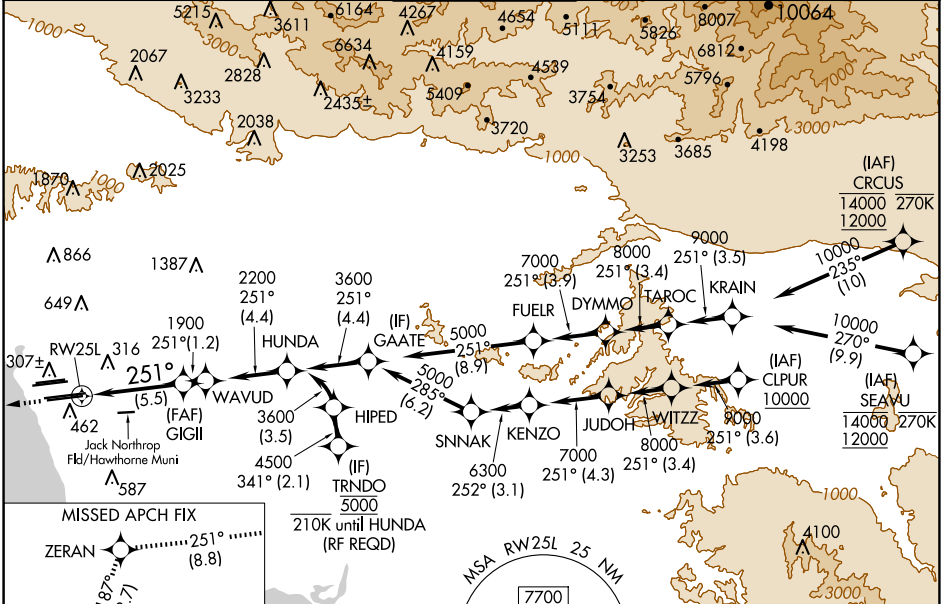


APP CRS	Rwy Idg	11095
251°	TDZE	104
	Apf Elev	128

RNAV (RNP) Z RWY 25L

LOS ANGELES INTL (LAX)

RNP AR APCH.		GPS required. For uncompensated Baro-VNAV systems, procedure NA below 5°C or above 54°C. Simultaneous approach authorized. Simultaneous approach authorized with HHR.		ALSF-2	MISSED APPROACH: Climb to 2000 on track 251° to ZERAN and on track 187° to CATLY and hold.		
D-ATIS	SOCAL APP CON		LOS ANGELES TOWER	GND CON		CLNC DEL	CPDLC
ARR 133.8	124.3	363.2	N 133.9	N 121.65	327.0	120.35	
DEP 135.65	124.5	235.975	S 120.95	S 121.75	327.0	327.0	
	(225°-044°)	(090°-224°)		W 121.4	327.0		
		(045°-089°)					



CATEGORY	A	B	C	D
RNP 0.15 DA		445/30	341 (400-5%)	
RNP 0.30 DA		543/50	439 (500-1)	

AUTHORIZATION REQUIRED

ELEV 128 **D** TDZE 104

GP 3.00°
TCH 54

2000
ZERAN
tr 187°
CATLY

VGSI and RNAV glidepath not coincident (VGSI Angle 3.00/TCH 70).

WAVUD
GIGI
1900
251°
2200
1900

See planview for multiple IF locations.

RW25L

5.5 NM
1.2 NM

TDZ/CL Rwws 6R, 7L, 24R, and 25L
HIRL all Rwws

SW-3, 23 JAN 2025 to 20 FEB 2025

SW-3, 23 JAN 2025 to 20 FEB 2025