


APP CRS 251°	Rwy Idg 11134 TDZE 104 Apt Elev 128
------------------------	--

RNAV (RNP) Z RWY 25R

LOS ANGELES INTL (LAX)

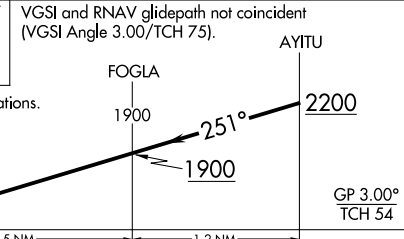
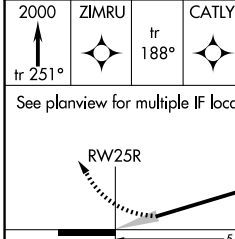
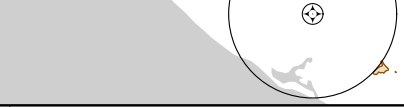
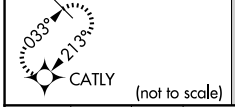
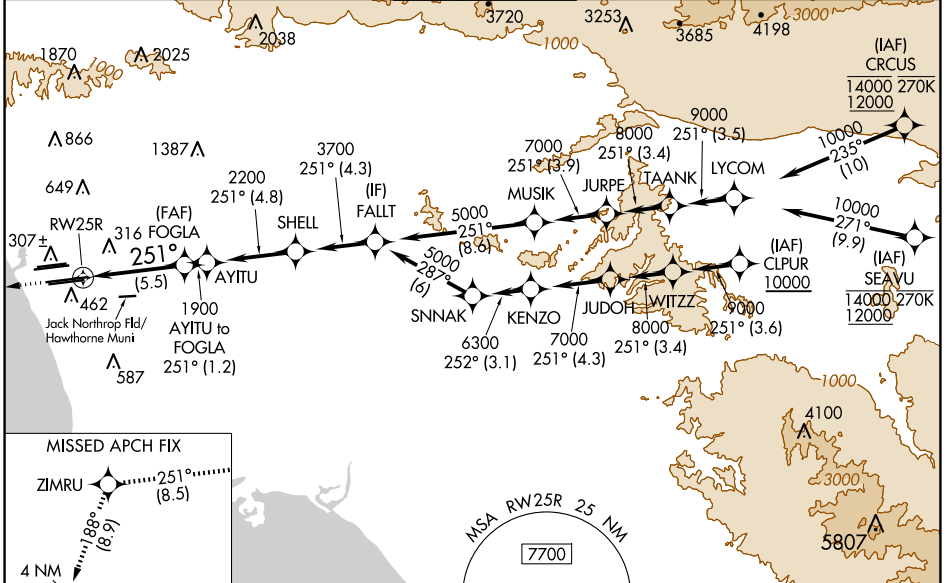
For uncompensated Baro-VNAV systems, procedure NA below 5°C (41°F) or above 54°C (130°F). Simultaneous approach authorized. Simultaneous approach authorized with HHR. GPS required. For inop ALS, increase RNP 0.11 all Cats visibility to RVR 6000.

MALSR



MISSED APPROACH: Climb to 2000 on track 251° to ZIMRU and track 188° to CATLY and hold.

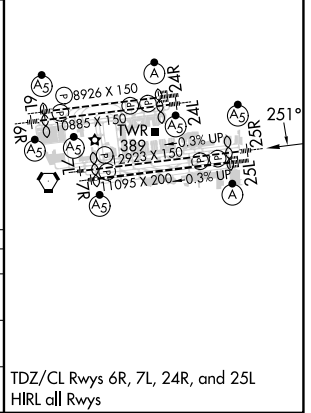
D-ATIS ARR 133.8 DEP 135.65	SOCAL APP CON 124.3 363.2 (APCH FM WEST) 124.5 235.975 (225°-044°)	124.9 269.0 (090°-224°) 128.5 360.7 (045°-089°)	LOS ANGELES TOWER N 133.9 239.3 S 120.95 379.1	GND CON N 121.65 327.0 S 121.75 327.0 W 121.4 327.0	CLNC DEL 120.35 327.0	CPDLC
---	--	--	--	---	---	-------



CATEGORY	A	B	C	D
RNP 0.11 DA		453/40	349 (400-¾)	
RNP 0.30 DA		544/50	440 (500-1)	

AUTHORIZATION REQUIRED

ELEV 128	TDZE 104
----------	----------



SW-3, 23 JAN 2025 to 20 FEB 2025

SW-3, 23 JAN 2025 to 20 FEB 2025