

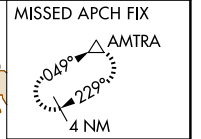
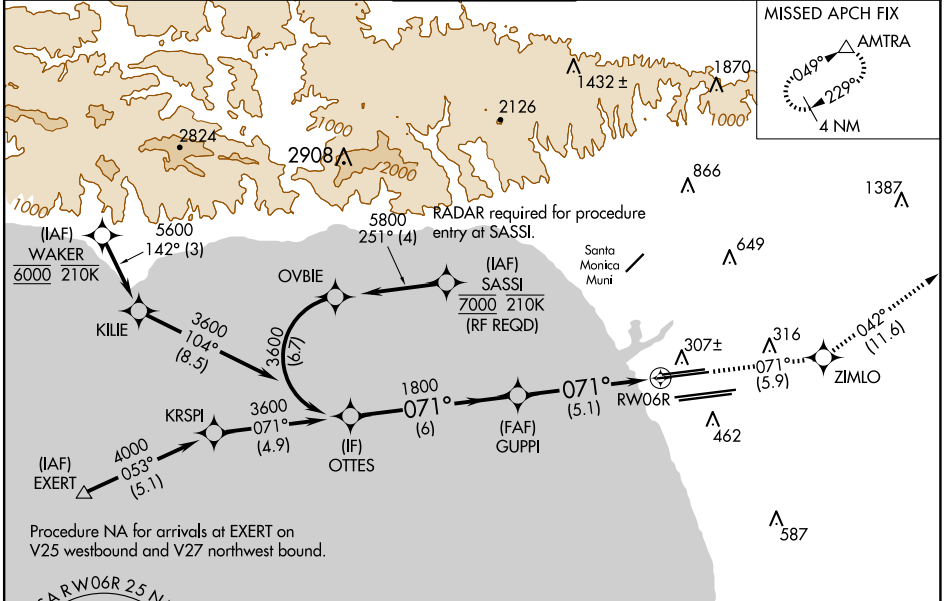
APP CRS <b>071°</b>	Rwy Idg TDZE Apt Elev	<b>9748</b> <b>116</b> <b>128</b>
------------------------	-----------------------------	---

# RNAV (RNP) Z RWY 6R

LOS ANGELES INTL (LAX)

<p>For uncompensated Baro-VNAV systems, procedure NA below 5°C (41°F) or above 54°C (130°F). GPS required. Simultaneous approach authorized. For inop ALS, increase RNP 0.30 all Cats visibility to RVR 6000.</p>	<p>MALSR</p>	<p>MISSED APPROACH: Climb to 3000 on track 071° to ZIMLO and on track 042° to AMTRA and hold.</p>

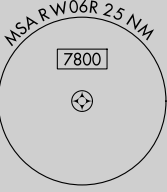
D-ATIS ARR <b>133.8</b> DEP <b>135.65</b>	<p>SOCL APP CON</p> <p><b>124.3 363.2</b> (APCH FM WEST) <b>124.5 235.975</b> (225°-044°)</p>	<p><b>124.9 269.0</b> (090°-224°) <b>128.5 360.7</b> (045°-089°)</p>	<p>LOS ANGELES TOWER <b>N 133.9 239.3</b> <b>S 120.95 379.1</b></p>	<p>GND CON <b>N 121.65 327.0</b> <b>S 121.75 327.0</b> <b>W 121.4 327.0</b></p>	<p>CLNC DEL <b>120.35</b> <b>327.0</b></p>	CPDLC
---	---	--	---	---	--	-------



SW-3, 23 JAN 2025 to 20 FEB 2025

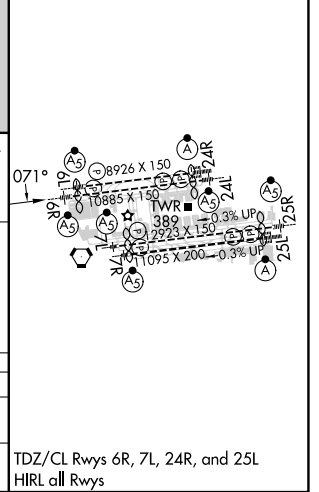
SW-3, 23 JAN 2025 to 20 FEB 2025

Procedure NA for arrivals at EXERT on V25 westbound and V27 northwest bound.



ELEV 128	<b>D</b> TDZE 116
----------	-------------------

<p>VGSI and RNAV glidepath not coincident (VGSI Angle 3.00/TCH 69).</p>				<p>3000</p> <p>↑</p> <p>tr 071°</p>	<p>ZIMLO</p>	<p>AMTRA</p>
<p>OTTES</p> <p>3600</p>	<p>GUUPI</p> <p>1800</p>	<p>RW06R</p>				
<p>GP 3.00°</p> <p>TCH 53</p>						
CATEGORY	A	B	C	D		
RNP 0.30 DA	471/40 355 (400-¾)					
<b>AUTHORIZATION REQUIRED</b>						



TDZ/CL Rwy 6R, 7L, 24R, and 25L  
HIRL all Rwy's