

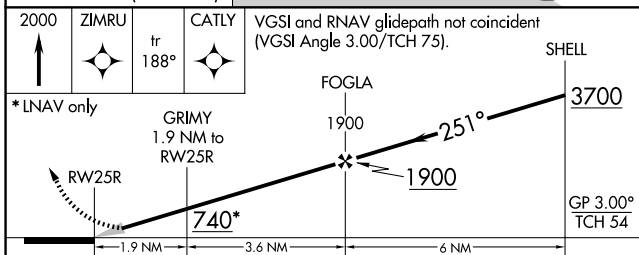
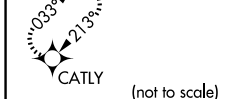
WAAS CH 49007 W25B	APP CRS 251°	Rwy Idg 11134 TDZE 104 Apt Elev 128
--	------------------------	--

RNAV (GPS) Y RWY 25R

LOS ANGELES INTL (LAX)

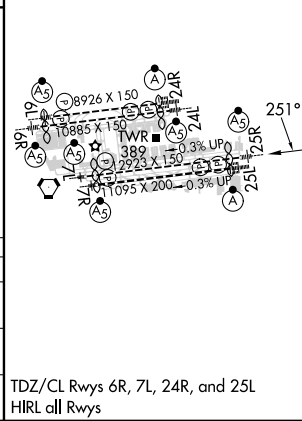
RNP APCH.	<p>▼ For uncompensated Baro-VNAV systems, LNAV/VNAV NA below 5°C or above 54°C. Simultaneous approach authorized. Simultaneous approach authorized with HHR. LNAV procedure NA during simultaneous operations. Use of FD or AP required during simultaneous operations. # RVR 1800 authorized with use of FD or AP or HUD to DA.</p>	<p>MALSR</p>	<p>MISSED APPROACH: Climb to 2000 direct ZIMRU and track 188° to CATLY and hold.</p>
-----------	--	--------------	--

D-ATIS ARR 133.8 DEP 135.65	SOCAL APP CON 124.3 363.2 (APCH FM WEST) 124.5 235.975 (225°-044°)	124.9 269.0 (090°-224°) 128.5 360.7 (045°-089°)	LOS ANGELES TOWER N 133.9 239.3 S 120.95 379.1	GND CON N 121.65 327.0 S 121.75 327.0 W 121.4 327.0	CLNC DEL 120.35 327.0	CPDLC
---	--	--	--	---	---	-------



CATEGORY	A	B	C	D
LPV DA#		304/24	200 (200-1/2)	
LNAV/VNAV DA		578/60	474 (500-1/4)	
LNAV MDA	640/24	536 (600-1/2)	640/55	536 (600-1)

ELEV 128	TDZE 104
----------	----------



SW-3, 23 JAN 2025 to 20 FEB 2025

SW-3, 23 JAN 2025 to 20 FEB 2025