


WAAS CH 82507 W06A	APP CRS 071°	Rwy Idg TDZE 119 Apt Elev 128	8566
---------------------------------	------------------------	---	-------------

RNAV (GPS) Y RWY 6L

LOS ANGELES INTL (LAX)

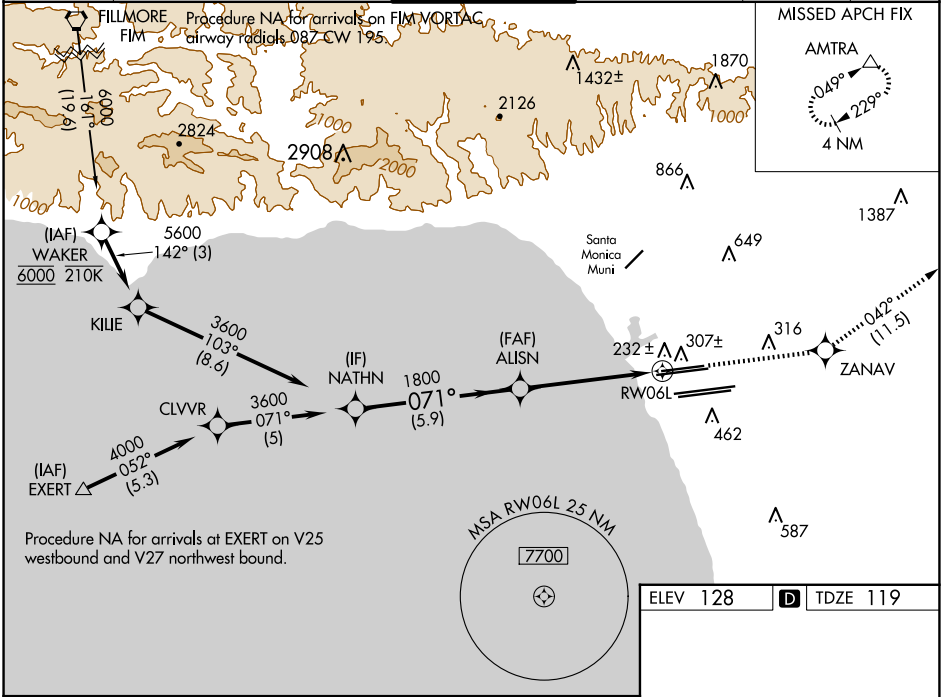
▼ For uncompensated Baro-VNAV systems, LNAV/VNAV NA below 5°C (41°F) or above 54°C (130°F). DME/DME RNP-0.3 NA. LNAV procedure NA during simultaneous operations. Use of FD or AP providing RNAV track guidance required during simultaneous operations. Simultaneous approach authorized.

MALSR



MISSED APPROACH: Climb to 3000 direct ZANAV and track 042° to AMTRA and hold.

D-ATIS ARR 133.8 DEP 135.65	SOCL APP CON 124.3 363.2 [APCH FM WEST] 124.5 235.975 [223°-044°]	124.9 269.0 [090°-224°] 128.5 360.7 [043°-089°]	LOS ANGELES TOWER N 133.9 239.3 S 120.95 379.1	GND CON N 121.65 327.0 S 121.75 327.0 W 121.4 327.0	CLNC DEL 120.35 327.0	CPDLC
---	---	--	--	---	---	-------

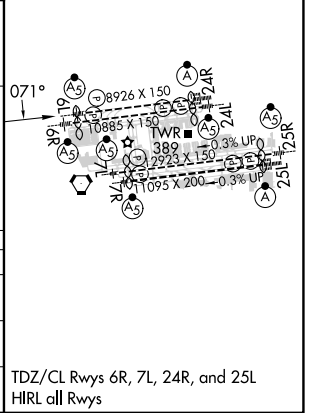


VGSI and RNAV glidepath not coincident (VGSI Angle 3.00/TCH 77).

NATHN	AUISN	ZANAV	AMTRA
3600	1800	3000	△
GP 3.00° TCH 55	1800	ir 042°	
5.9 NM		4.1 NM	
CATEGORY	A	B	C
LPV DA	369/24	250 (300-½)	
LNAV/VNAV DA	411/24	292 (300-½)	
LNAV MDA	500/24 381 (400-½)	500/35 381 (400-¾)	

* 1 NM to RW06L

* INAV only



SW-3, 23 JAN 2025 to 20 FEB 2025

SW-3, 23 JAN 2025 to 20 FEB 2025