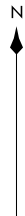


SOCAL APP CON  
124.5 235.975  
D-ATIS ARR  
133.8

(SADDE: SADDE8) 23334  
SADDE EIGHT ARRIVAL

AL-237 (FAA)

LOS ANGELES INTL (LAX)  
LOS ANGELES, CALIFORNIA



AVENAL  
117.1 AVE  
Chan 118

SHAFTER  
115.4 EHF  
Chan 101

PALMDALE  
115.55 PMD  
Chan 102(Y)

SAN MARCUS  
114.9 RZS  
Chan 96

FILLMORE  
112.5 FIM  
Chan 72

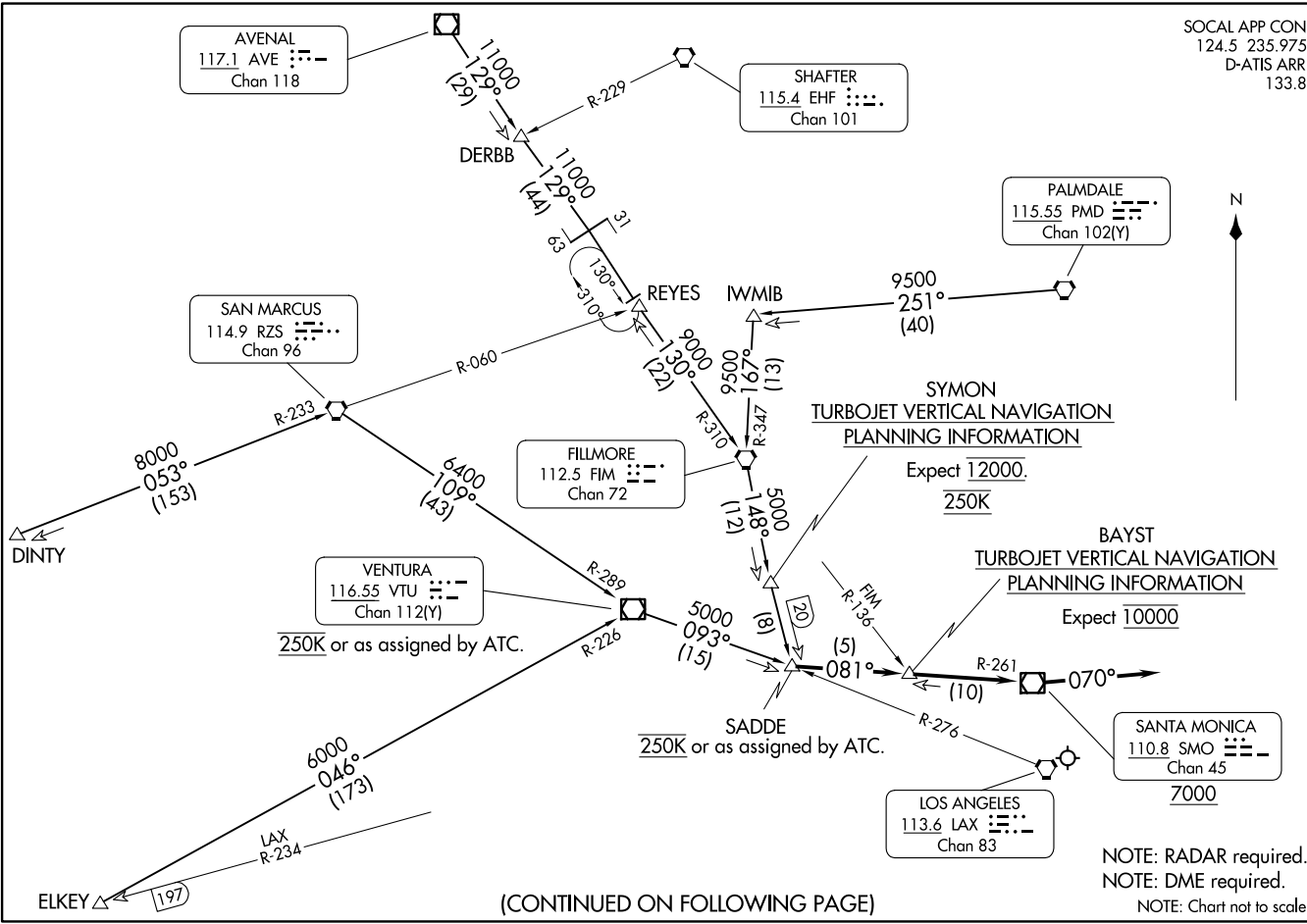
VENTURA  
116.55 VTU  
Chan 112(Y)

LOS ANGELES  
113.6 LAX  
Chan 83

SANTA MONICA  
110.8 SMO  
Chan 45

SADDE EIGHT ARRIVAL  
(SADDE: SADDE8) 07DEC17

LOS ANGELES, CALIFORNIA  
LOS ANGELES INTL (LAX)



(CONTINUED ON FOLLOWING PAGE)

NOTE: RADAR required.  
NOTE: DME required.  
NOTE: Chart not to scale.

ARRIVAL ROUTE DESCRIPTION

AVENAL TRANSITION (AVE.SADDE8): From over AVE VOR/DME on AVE R-129 and FIM R-310 to FIM VORTAC, then on FIM R-148 to SADDE. Thence. . . .

DERBB TRANSITION (DERBB.SADDE8): From over DERBB on AVE R-129 and FIM R-310 to FIM VORTAC, then on FIM R-148 to SADDE. Thence. . . .

DINTY TRANSITION (DINTY.SADDE8): From over DINTY on RZS R-233 to RZS VORTAC, then on RZS R-109 and VTU R-289 to VTU VOR/DME, then on VTU R-093 to SADDE. Thence. . . .

ELKEY TRANSITION (ELKEY.SADDE8): From over ELKEY on VTU R-226 to VTU VOR/DME then on VTU R-093 to SADDE. Thence. . . .

FILLMORE TRANSITION (FIM.SADDE8): From over FIM VORTAC on FIM R-148 to SADDE. Thence. . . .

PALMDALE TRANSITION (PMD.SADDE8): From over PMD VORTAC on PMD R-251 and FIM R-347 to FIM VORTAC, then on FIM R-148 to SADDE. Thence. . . .

SAN MARCUS TRANSITION (RZS.SADDE8): From over RZS VORTAC on RZS R-109 and VTU R-289 to VTU VOR/DME, then on VTU R-093 to SADDE. Thence. . . .

VENTURA TRANSITION (VTU.SADDE8): From over VTU VOR/DME on VTU R-093 to SADDE. Thence. . . .

. . . From SADDE on SMO VOR/DME R-261 to cross SMO VOR/DME at or above 7000. Then on heading 070°. Expect RADAR vectors to final approach course.

LOST COMMUNICATIONS

In the event of lost communications proceed on the ILS or LOC RWY 24R.

SW-3, 23 JAN 2025 to 20 FEB 2025

SW-3, 23 JAN 2025 to 20 FEB 2025