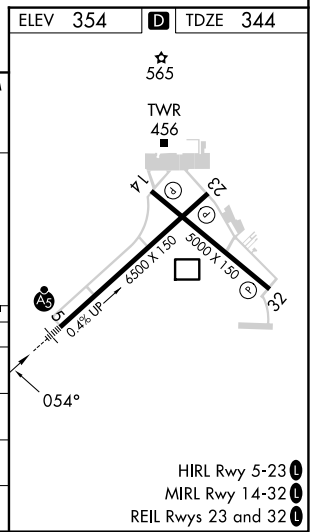
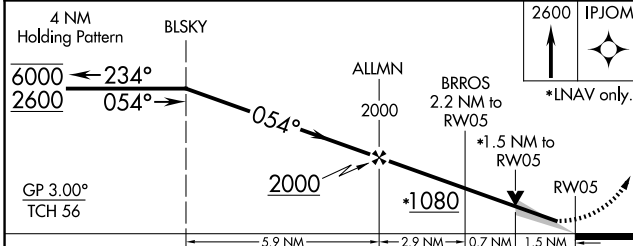
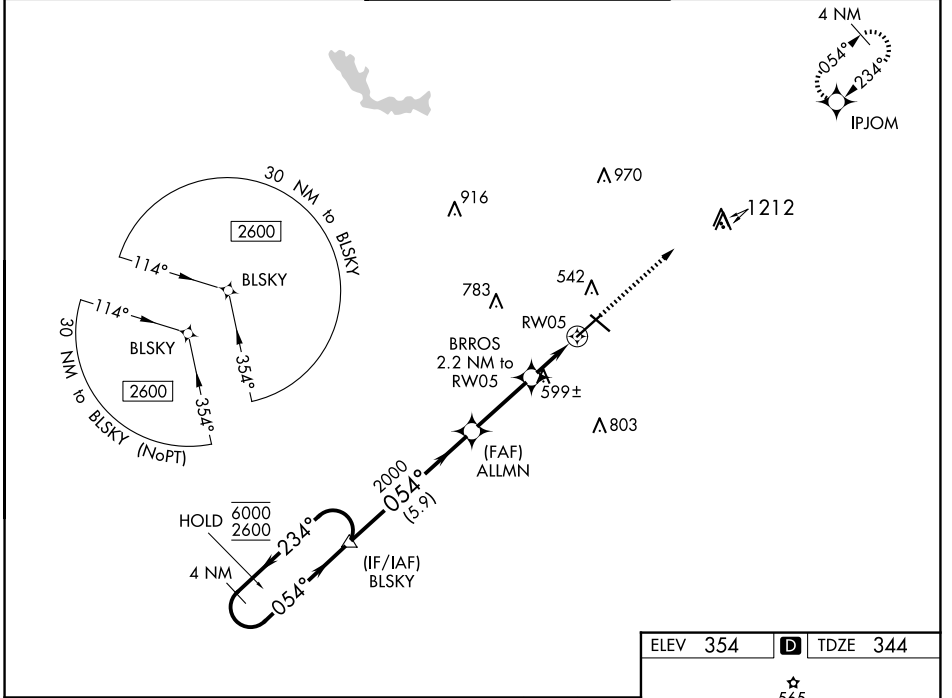


| | | |
|--|------------------------|---|
| WAAS CH 97315 W05A | APP CRS 054° | Rwy Idg TDZE 344 Apt Elev 354 |
|--|------------------------|---|

RNAV (GPS) RWY 5

MIDDLE GEORGIA RGNL (MCN)

| | | | | |
|---|---|--|---|-------------------------|
| RNP APCH. | | MALSR | MISSED APPROACH: Climb to 2600 direct IPJOM and hold. | |
| For uncompensated Baro-VNAV systems, LNAV/VNAV NA below -8°C or above 54°C. | | | | |
| ATIS 120.775 | ATLANTA APP CON ★ 124.2 279.6 | MACON TOWER ★ 128.2 (CTAF) 257.8 | GND CON 121.65 | UNICOM 122.95 |



| CATEGORY | A | B | C | D |
|--------------|-----------|---------------|------------------------------|-------------------------------|
| LPV DA | 544/24 | | 200 (200-1/2) | |
| LNAV/VNAV DA | 863-1 3/8 | | 519 (600-1 3/8) | |
| LNAV MDA | 860/24 | 516 (600-1/2) | 860/55 | 516 (600-1) |
| CIRCLING | 900-1 | 546 (600-1) | 920-1 1/2 566 (600-1 1/2) | 1120-2 1/2 766 (800-2 1/2) |

SE-4, 23 JAN 2025 to 20 FEB 2025

SE-4, 23 JAN 2025 to 20 FEB 2025