

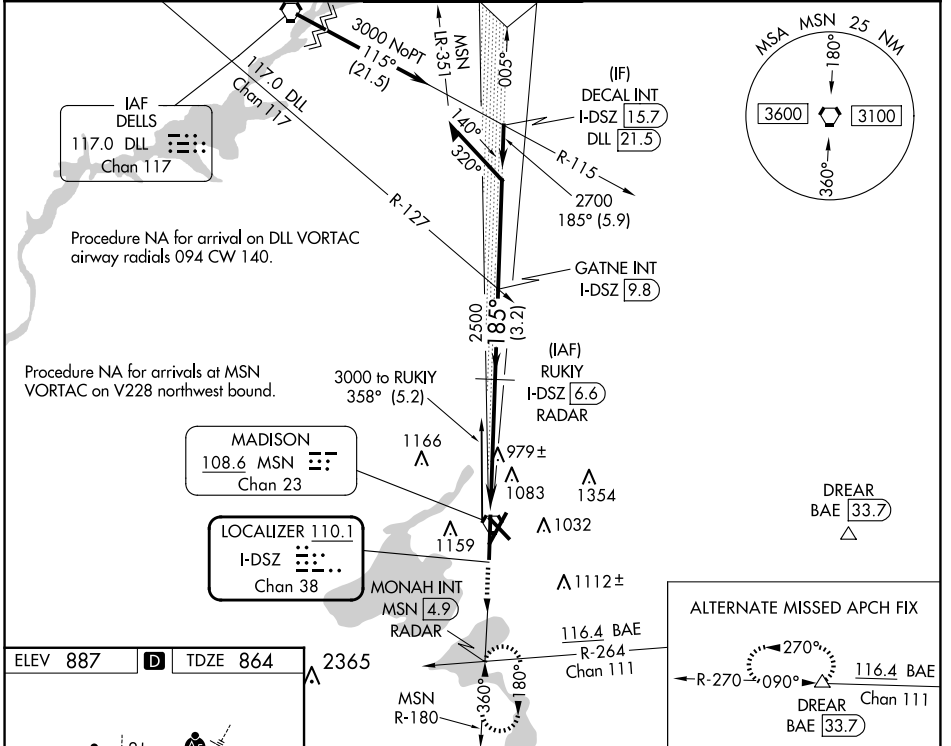
LOC/DME I-DSZ <b>110.1</b> Chan <b>38</b>	APP CRS <b>185°</b>	Rwy Idg <b>8606</b> TDZE <b>864</b> Apt Elev <b>887</b>
---	------------------------	--

# ILS RWY 18 (SA CAT I & II)

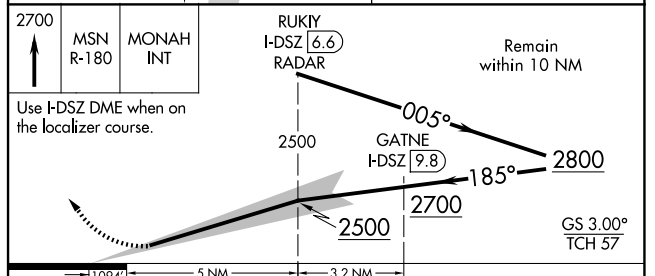
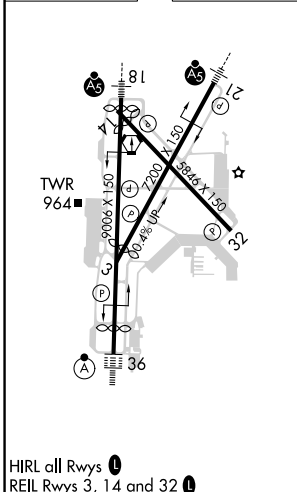
DANE COUNTY RGNL/TRUAX FLD (MSN)

DME or RADAR required.		MALSR	MISSED APPROACH: Climb to 2700 on MSN VORTAC R-180 to MONAH INT/MSN VORTAC 4.9 DME/RADAR and hold.
<p>Procedure NA when tower closed.</p> <p>SA CAT I: Requires specific OPSPEC, MSPEC, or LOA approval and use of HUD to DH.</p> <p>SA CAT II: Reduced lighting: Requires specific OPSPEC, MSPEC, or LOA approval and use of autoland or HUD to touchdown.</p>			

ATIS <b>124.65 278.3</b>	MADISON APP CON ★ <b>135.45 343.7</b>	MADISON TOWER ★ <b>119.3 (CTAF) 0 257.8</b>	GND CON <b>121.9 348.6</b>	CINC DEL <b>121.625</b>	UNICOM <b>122.95</b>
-----------------------------	--	--	-------------------------------	----------------------------	-------------------------



ELEV <b>887</b>	<b>D</b>	TDZE <b>864</b>
-----------------	----------	-----------------



CATEGORY	A	B	C	D
S-ILS 18	SA CAT I	RA 153/14	150 DA 1014	
S-ILS 18	SA CAT II	RA 103/12	100 DA 964	

## SA CATEGORY I & II ILS SPECIAL AIRCREW & AIRCRAFT CERTIFICATION REQUIRED

EC-3, 23 JAN 2025 to 20 FEB 2025

EC-3, 23 JAN 2025 to 20 FEB 2025