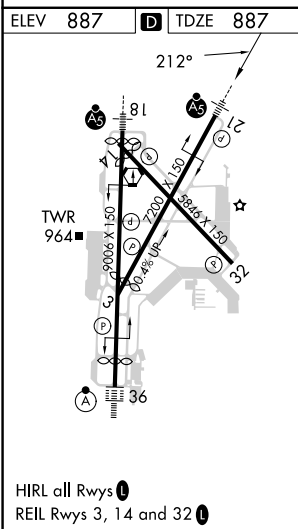
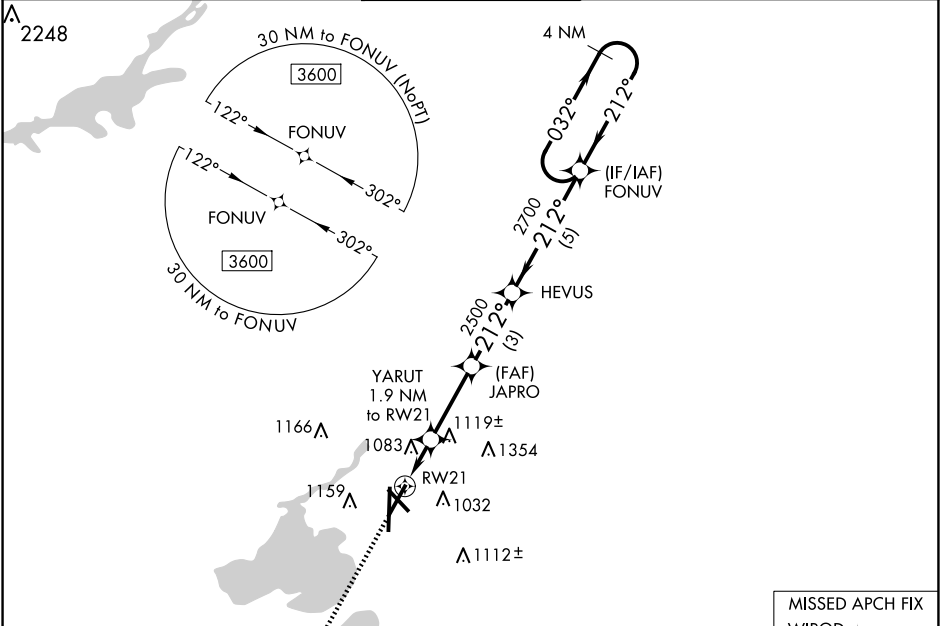


WAAS CH 42829 W21A	APP CRS 212°	Rwy Idg TDZE 887 Apt Elev 887	7015
--	------------------------	---	-------------

RNAV (GPS) RWY 21
DANE COUNTY RGNL/TRUAX FLD (MSN)

⚠	For uncompensated Baro-VNAV systems, LNAV/VNAV NA below -20°C (-4°F) or above 54°C (130°F). DME/DME RNP-0.3 NA. For inop MALSR, increase LNAV/VNAV all Cats visibility to 1¾ mile and LNAV Cat C/D visibility to 1½ mile.	MALSR 	MISSED APPROACH: Climb to 3600 direct WIROD and hold.

ATIS 124.65 278.3	MADISON APP CON * 135.45 343.7	MADISON TOWER * 119.3 (CTAF) 0 257.8	GND CON 121.9 348.6	CLNC DEL 121.625	UNICOM 122.95
-----------------------------	--	--	-------------------------------	----------------------------	-------------------------



ELEV 887	D	TDZE 887		
3600	WIROD	* LNAV only	FONUV 4 NM Holding Pattern	
↑		YARUT 1.9 NM to RW21	JAPRO 2500	
		* 1.4 NM to RW21	HEVUS 2700	
		* 1540	2500	
		1.4 NM	0.5 3 NM 5 NM	
3600			032° → ← 212° → 3600	
			GP 3.00° TCH 53	
CATEGORY	A	B	C	D
LPV DA	1087-½		200 (200-½)	
LNAV/VNAV DA	1412-1¾		525 (600-1¾)	
LNAV MDA	1380-½ 493 (500-½)		1380-1 493 (500-1)	
C CIRCLING	1420-1 533 (600-1)	1460-1 573 (600-1)	1460-1½ 573 (600-1½)	1700-2¾ 813 (900-2¾)

EC-3, 23 JAN 2025 to 20 FEB 2025

EC-3, 23 JAN 2025 to 20 FEB 2025