

(TRIXY5.TRIXY) 23334

EASTERN WV RGNL/SHEPHERD FLD (MRB)

TRIXY FIVE DEPARTURE

AL-249 (FAA)

MARTINSBURG, WEST VIRGINIA

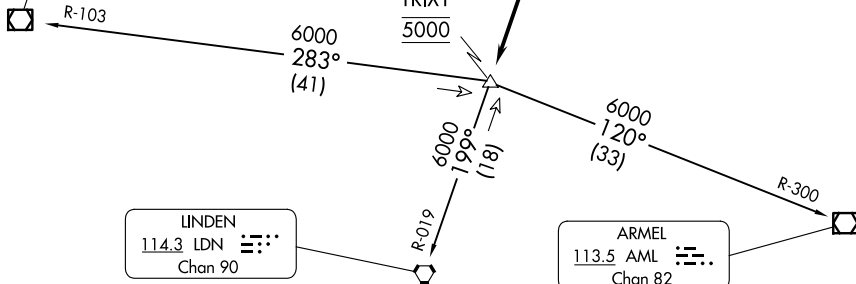
ASOS
 119.925
 CLNC DEL
 121.8 257.65
 132.075 269.075 (When Tower Closed)
 GND CON
 121.8 257.65
 MARTINSBURG TOWER*
 124.3 (CTAF) 233.7
 POTOMAC DEP CON
 126.825 239.025

TAKEOFF MINIMUMS

Rwy 8: Standard.
 Rwy 26: Standard with minimum climb
 of 300' per NM to 5000'.

**TOP ALTITUDE:
 6000**

KESSEL
 110.8 ESL :...
 Chan 45



NE-4, 23 JAN 2025 to 20 FEB 2025

NE-4, 23 JAN 2025 to 20 FEB 2025

Note: Chart not to scale.

DEPARTURE ROUTE DESCRIPTION

TAKEOFF RUNWAY 8: Climb heading 079° to 1600, then climbing right turn heading 260° to intercept LDN VORTAC R-019 to cross TRIXY INT at 5000, then on transition or assigned route, thence . . .

TAKEOFF RUNWAY 26: Climb heading 259° to intercept LDN VORTAC R-019 to cross TRIXY INT at 5000, then on transition or assigned route, thence . . .
 . . . maintain 6000, expect filed altitude/flight level ten minutes after departure.

ARMEL TRANSITION (TRIXY5.AML): From over TRIXY INT on AML R-300 to AML VOR/DME.

KESSEL TRANSITION (TRIXY5.ESL): From over TRIXY INT on ESL R-103 to ESL VOR/DME.

LINDEN TRANSITION (TRIXY5.LDN): From over TRIXY INT on LDN R-019 to LDN VORTAC.

TRIXY FIVE DEPARTURE

(TRIXY5.TRIXY) 31MAR16

MARTINSBURG, WEST VIRGINIA

EASTERN WV RGNL/SHEPHERD FLD (MRB)