

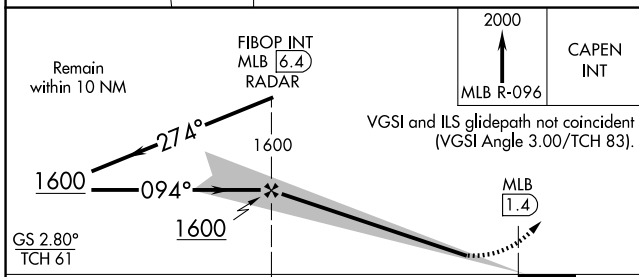
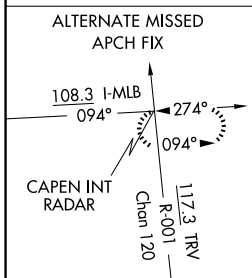
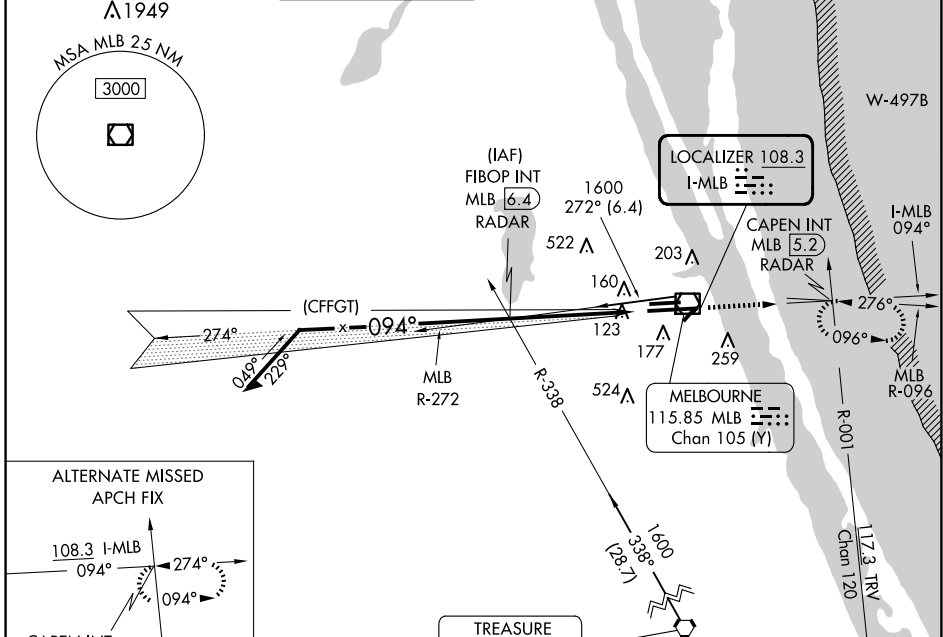
LOC I-MLB 108.3	APP CRS 094°	Rwy Idg 10181
		TDZE 32
		Apt Elev 33

ILS or LOC RWY 9R

MELBOURNE ORLANDO INTL (MLB)

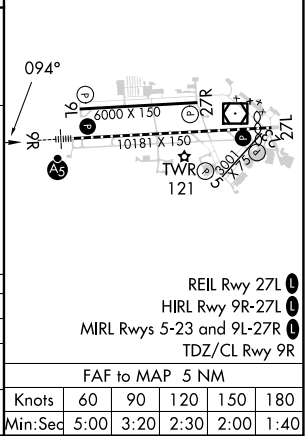
DME or RADAR required.		MALSRR	MISSED APPROACH: Climb to 2000 on MLB VOR/DME R-096 to CAPEN INT/MLB VOR/DME 5.2 DME/RADAR and hold.			

ATIS 132.55	ORLANDO APP CON 132.65 281.425	MELBOURNE TOWER ★ 118.2 (CTAF) 257.8	GND CON 121.9	CLNC DEL 121.9	CLNC DEL 132.65 (When twr closed)	UNICOM 122.95
-----------------------	--	--	-------------------------	--------------------------	--	-------------------------



ELEV 33	TDZE 32
---------	---------

CATEGORY	A	B	C	D
S-ILS 9R	232/18		200 (200-½)	
S-LOC 9R	420/24	388 (400-½)	420/35	388 (400-¾)
CIRCLING	500-1 467 (500-1)	560-1 527 (600-1)	680-1¾ 647 (700-1¾)	880-2¾ 847 (900-2¾)



SE-3, 23 JAN 2025 to 20 FEB 2025

SE-3, 23 JAN 2025 to 20 FEB 2025

REIL Rwy 27L	1
HIRL Rwy 9R-27L	1
MIRL Rws 5-23 and 9L-27R	1
TDZ/CL Rwy 9R	
FAF to MAP 5 NM	
Knots	60 90 120 150 180
Min:Sec	5:00 3:20 2:30 2:00 1:40