

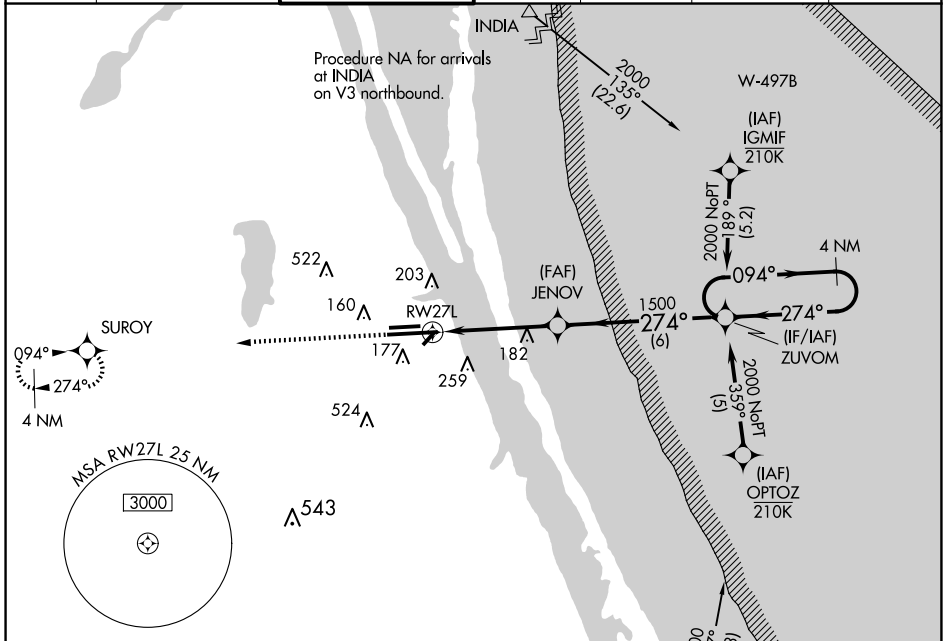
WAAS CH 56201 W27B	APP CRS 274°	Rwy Idg TDZE Apt Elev	9482 26 33
--	------------------------	-----------------------------	---------------------------------------

RNAV (GPS) RWY 27L

MELBOURNE ORLANDO INTL (MLB)

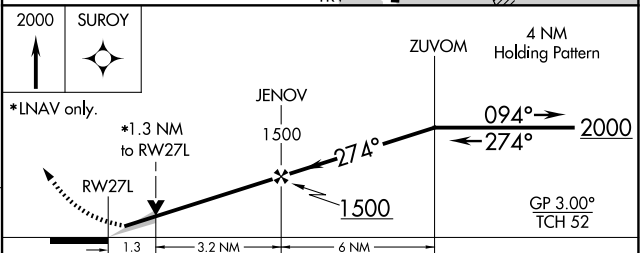
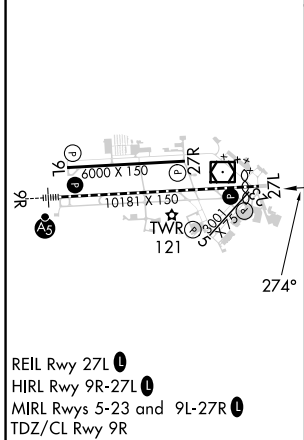
RNP APCH.		MISSED APPROACH: Climb to 2000 direct SUROY and hold.			
▼ For uncompensated Baro-VNAV systems, LNAV/VNAV NA below -15°C (5°F) or above 54°C (130°F).					

ATIS 132.55	ORLANDO APP CON 132.65 281.425	MELBOURNE TOWER ★ 118.2 (CTAF) 257.8	GND CON 121.9	CLNC DEL 121.9	CLNC DEL 132.65 (When twr closed)	UNICOM 122.95
-----------------------	--	--	-------------------------	--------------------------	--	-------------------------



ELEV 33	D	TDZE 26
---------	----------	---------

Procedure NA for arrivals on TRV VORTAC airway radials 325 CW 350.



CATEGORY	A	B	C	D
LPV DA		226- ³ / ₄	200 (200- ³ / ₄)	
LNAV/VNAV DA		318- ⁷ / ₈	292 (300- ⁷ / ₈)	
LNAV MDA	500-1	474 (500-1)	500-1 ³ / ₈	474 (500-1 ³ / ₈)
C CIRCLING	500-1 467 (500-1)	560-1 527 (600-1)	680-1 ³ / ₄ 647 (700-1 ³ / ₄)	880-2 ³ / ₄ 847 (900-2 ³ / ₄)

SE-3, 23 JAN 2025 to 20 FEB 2025

SE-3, 23 JAN 2025 to 20 FEB 2025