

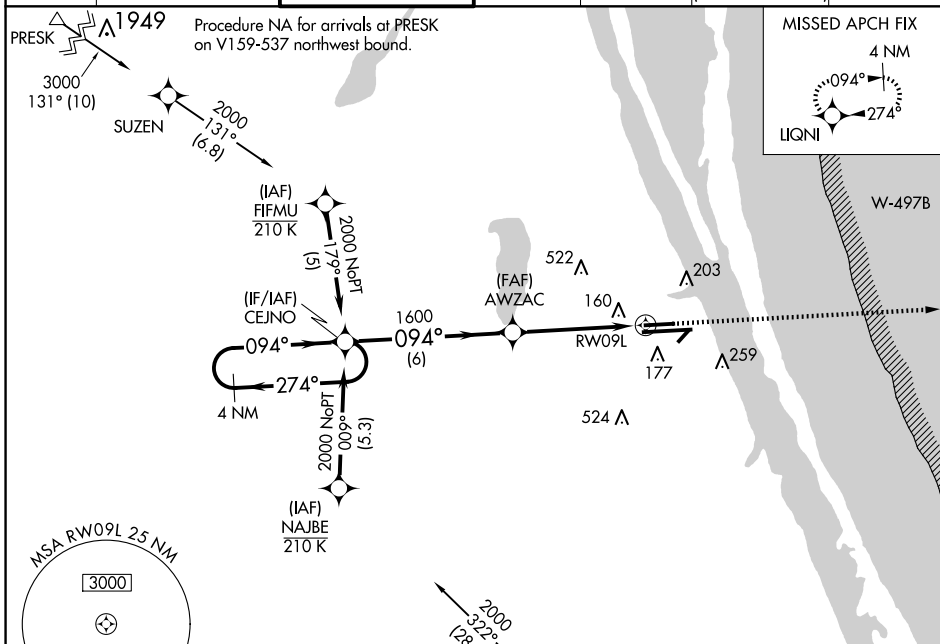
WAAS CH 65601 W09A	APP CRS 094°	Rwy Idg TDZE 33 Apt Elev 33	6000
--	------------------------	---	-------------

RNAV (GPS) RWY 9L

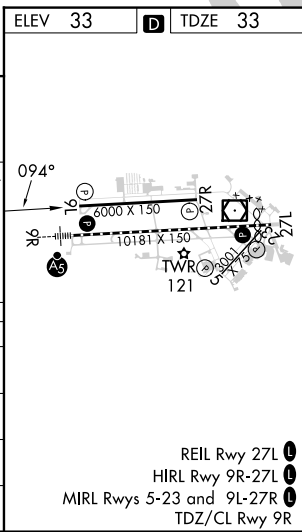
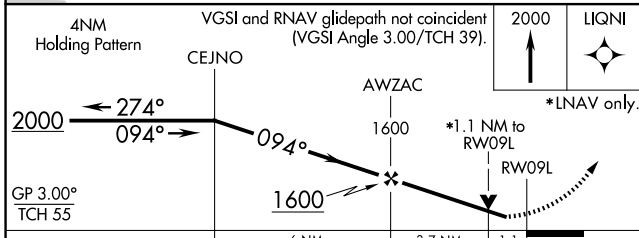
MELBOURNE ORLANDO INTL (MLB)

RNP APCH.				MISSED APPROACH: Climb to 2000 direct LIQNI and hold.		
<p>▼ For uncompensated Baro-VNAV systems, LNAV/VNAV NA below -1.5°C (5°F) or above 54°C (130°F). Helicopter visibility reduction below ¾ SM NA.</p>						

ATIS 132.55	ORLANDO APP CON 132.65 281.425	MELBOURNE TOWER * 118.2 (CTAF) 257.8	GND CON 121.9	CLNC DEL 121.9	CLNC DEL 132.65 (When twr closed)	UNICOM 122.95
-----------------------	--	--	-------------------------	--------------------------	--	-------------------------



ELEV 33	TDZE 33
---------	---------



CATEGORY	A	B	C	D
LPV DA		283-¾	250 (300-¾)	
LNAV/VNAV DA		467-1¾	434 (500-1¾)	
LNAV MDA	420-1	387 (400-1)	420-1½	387 (400-1½)
CIRCLING	500-1 467 (500-1)	560-1 527 (600-1)	680-1¾ 647 (700-1¾)	880-2¾ 847 (900-2¾)

SE-3, 23 JAN 2025 to 20 FEB 2025

SE-3, 23 JAN 2025 to 20 FEB 2025