

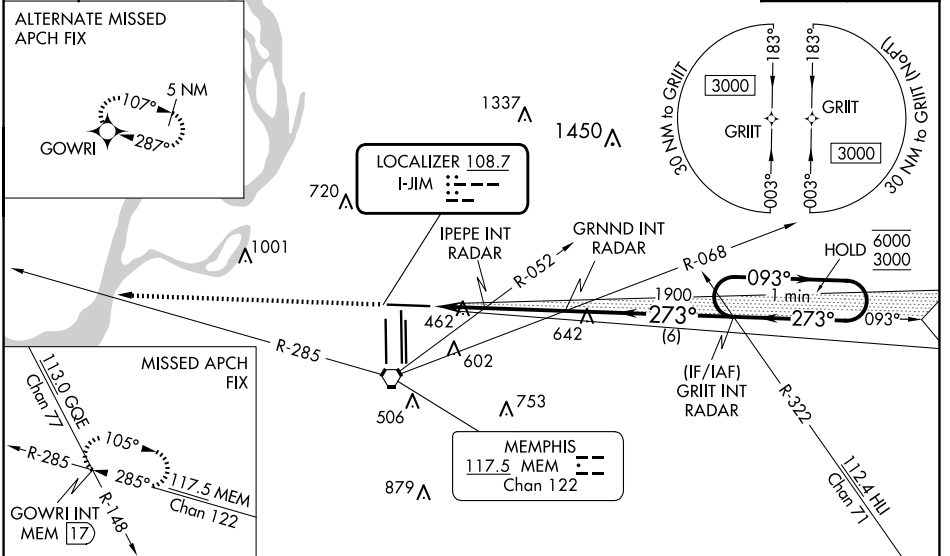
LOC I-JIM	APP CRS	Rwy Idg	8946
108.7	273°	TDZE	292
		Apt Elev	341

ILS or LOC RWY 27

MEMPHIS INTL (MEM)

RNAV 1-GPS or RADAR required for procedure entry.			MISSED APPROACH: Climb to 5000 and intercept MEM VORTAC R-285 to GOWRI INT/17 DME and hold, continue climb-in-hold to 5000.
▼ For inop ALS, increase S-ILS Cat E visibility to RVR 4000, and S-LOC Cat E visibility to 2 SM, IPEPE fix minimums S-LOC Cat E visibility to 1/4 SM. ▲ *RVR 1800 authorized with use of FD or AP or HUD to DA.			
MEMPHIS APP CON		MEMPHIS TOWER	GND CON
119.1 291.6 (176°-355°)	(Rwy 9-27)	118.3 257.8	(Rwy 9-27)
125.8 338.3 (356°-175°)	(Rwys 18C-36C, 18L-36R)	119.7 257.8	(Rwys 18C-36C, 18L-36R)
	(Rwy 18R-36L)	128.425 257.8	(Rwy 18R-36L)
			121.0 379.2
			121.9 379.2
			121.65 379.2

D-ATIS	CLNC DEL	CPDLC
127.75	125.2	



ELEV 341	D	TDZE 292	5000	MEM R-285	GOWRI INT	GRNND INT RADAR	GRIIT INT RADAR	One Minute Holding Pattern
				VGSI and ILS glidepath not coincident (VGSI Angle 3.00/TCH 69).				
CATEGORY A B C D E		S-ILS 27 * 492/24 200 (200-1/2)						
S-LOC 27 980/24 688 (700-1/2)		980-1 1/2 688 (700-1 1/2)					980-2 1020-2 1/4 1140-2 3/4 639 (700-2) 679 (700-2 1/4) 799 (800-2 3/4)	
C CIRCLING 980-1 639 (700-1)		IPEPE FIX MINIMUMS (DUAL VOR RECEIVERS OR RADAR REQUIRED)						
S-LOC 27 720/24 428 (400-1/2)		720/40 428 (400-3/4)					C CIRCLING 940-1 599 (600-1)	
940-1 1/2 1020-2 1/4 1140-2 3/4 599 (600-1 1/2) 679 (700-2 1/4) 799 (800-2 3/4)								
FAF to MAP 4.9 NM								
Knots	60	90	120	150	180			
Min:Sec	4:54	3:16	2:27	1:58	1:38			

SE-1, 23 JAN 2025 to 20 FEB 2025

SE-1, 23 JAN 2025 to 20 FEB 2025