


APP CRS	Rwy Idg	<b>9000</b>
<b>180°</b>	TDZE	<b>301</b>
	Apt Elev	<b>341</b>

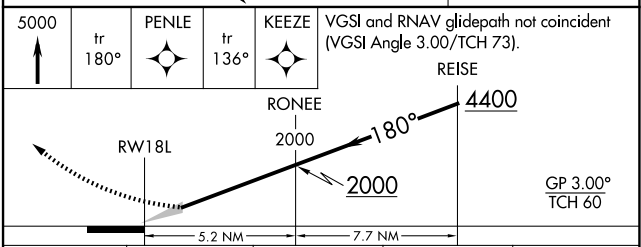
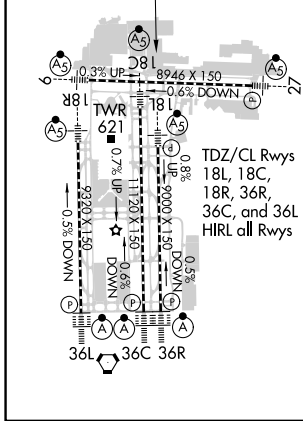
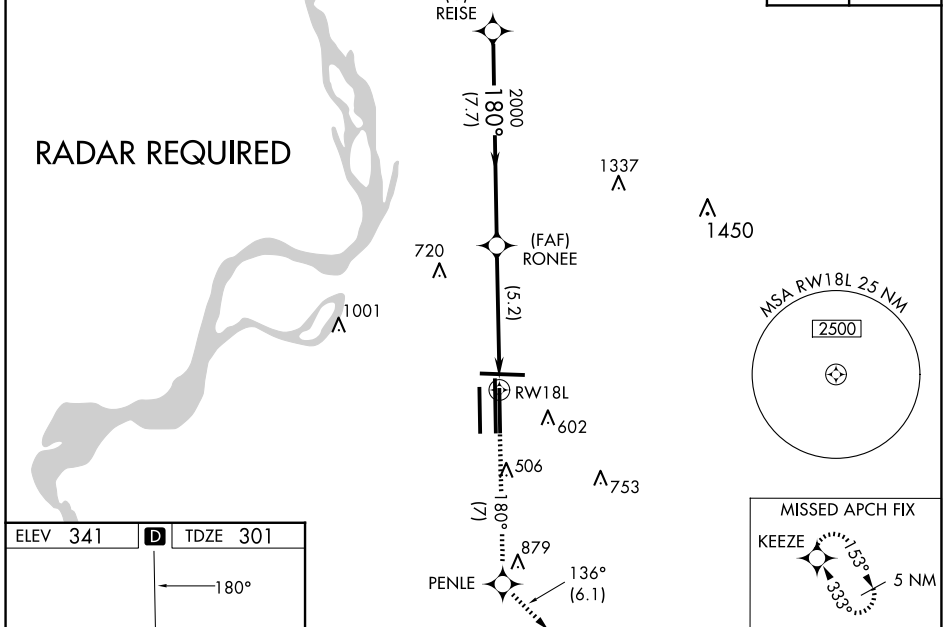
# RNAV (RNP) Y RWY 18L

MEMPHIS INTL (MEM)

<p><b>▼</b> For uncompensated Baro-VNAV systems, procedure NA below -9°C (16°F) or above 48°C (118 °F). GPS required. Simultaneous approach authorized. For inop ALS, increase RNP 0.30 * all Cats visibility to RVR 6000 and RNP 0.30 all Cats visibility to 1¼ SM.</p>	<p>MALSR</p> 	<p>MISSED APPROACH: Climb to 5000 on track 180° to PENLE and on track 136° to KEEZE and hold, continue climb-in-hold to 5000. *Missed approach requires minimum climb of 400 feet per NM to 1000.</p>

MEMPHIS APP CON	MEMPHIS TOWER	GND CON
<b>119.1 291.6</b> (176°-355°)	<b>118.3 257.8</b> (Rwy 9-27)	<b>121.0 379.2</b> (Rwy 9-27)
<b>125.8 338.3</b> (356°-175°)	<b>119.7 257.8</b> (Rwys 18C-36C, 18L-36R)	<b>121.9 379.2</b> (Rwys 18C-36C, 18L-36R)
	<b>128.425 257.8</b> (Rwy 18R-36L)	<b>121.65 379.2</b> (Rwy 18R-36L)

D-ATIS	CLNC DEL	CPDLC
<b>127.75</b>	<b>125.2</b>	



CATEGORY	A	B	C	D
RNP 0.30 DA*	698/50 397 (400-1)			
RNP 0.30 DA	791/60 490 (500-1¼)			

**AUTHORIZATION REQUIRED**

SE-1, 23 JAN 2025 to 20 FEB 2025

SE-1, 23 JAN 2025 to 20 FEB 2025