

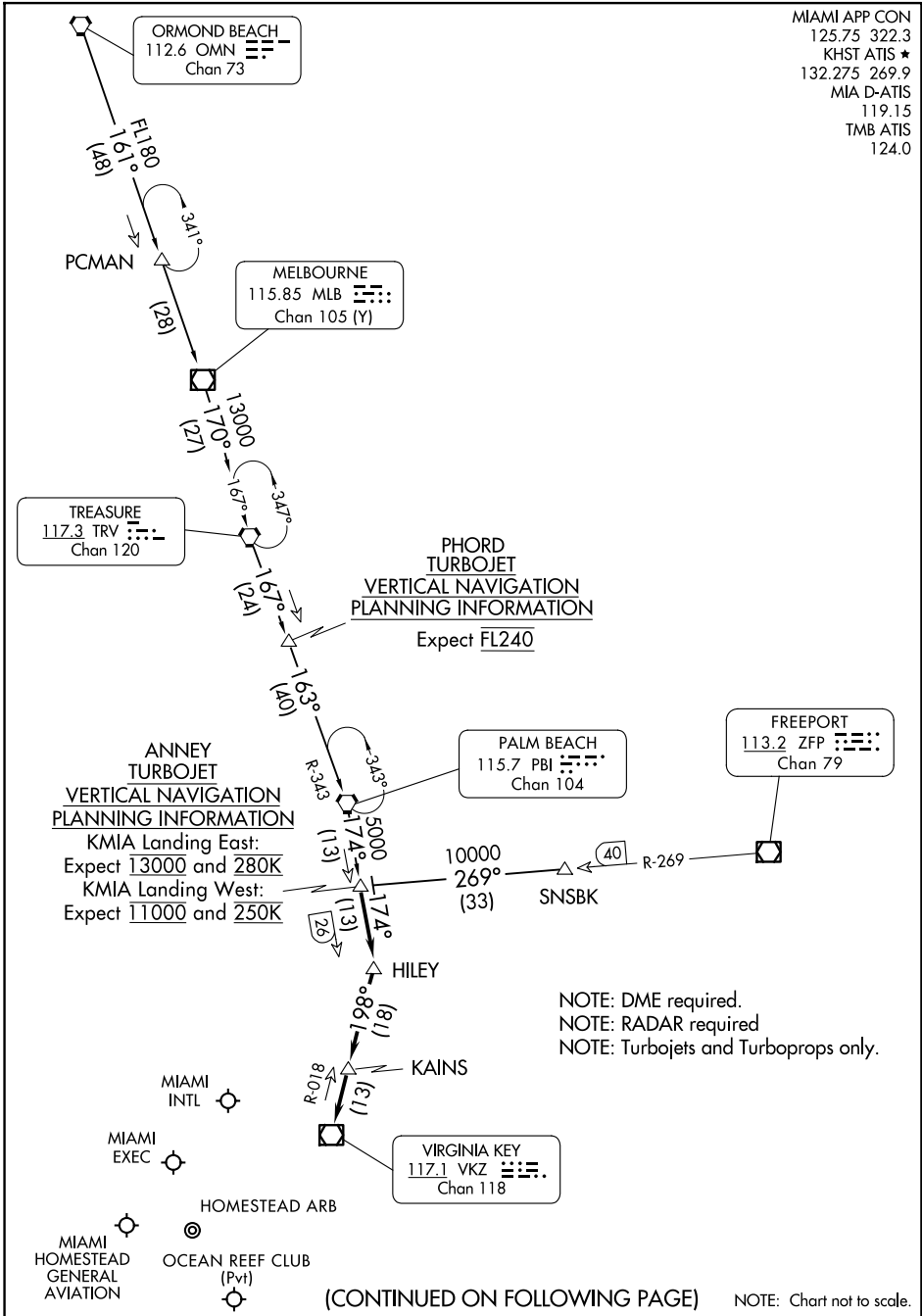
ANNEY FOUR ARRIVAL

MIAMI, FLORIDA

MIAMI APP CON
 125.75 322.3
 KHST ATIS ★
 132.275 269.9
 MIA D-ATIS
 119.15
 TMB ATIS
 124.0

SE-3, 23 JAN 2025 to 20 FEB 2025

SE-3, 23 JAN 2025 to 20 FEB 2025



(CONTINUED ON FOLLOWING PAGE)

NOTE: Chart not to scale.

ANNEY FOUR ARRIVAL

MIAMI, FLORIDA

ANNEY FOUR ARRIVAL

MIAMI, FLORIDA

ARRIVAL ROUTE DESCRIPTION

MELBOURNE TRANSITION (MLB.ANNEY4): From over MLB VOR/DME on MLB R-170 to TRV VORTAC, then on TRV R-167 to PHORD, then on PBI R-343 to PBI VORTAC, then on PBI R-174 to ANNEY. Thence

ORMOND BEACH TRANSITION (OMN.ANNEY4): From over OMN VORTAC on OMN R-161 to MLB VORTAC, then on MLB R-170 to TRV VORTAC, then on TRV R-167 to PHORD, then on PBI R-343 to PBI VORTAC, then on PBI R-174 to ANNEY. Thence

SNSBK TRANSITION (SNSBK.ANNEY4): From over SNSBK on ZFP R-269 to ANNEY. Thence

TREASURE TRANSITION (TRV.ANNEY4): From over TRV VORTAC on TRV R-167 to PHORD, then on PBI R-343 to PBI VORTAC, then on PBI R-174 to ANNEY. Thence

. . . . From over ANNEY on PBI R-174 to HILEY/PBI 26 DME, then on VKZ R-018 to KAINS/VKZ 13 DME, then on VKZ R-018 to VKZ VOR/DME. Expect RADAR vectors to final approach course after KAINS.

SE-3, 23 JAN 2025 to 20 FEB 2025

SE-3, 23 JAN 2025 to 20 FEB 2025