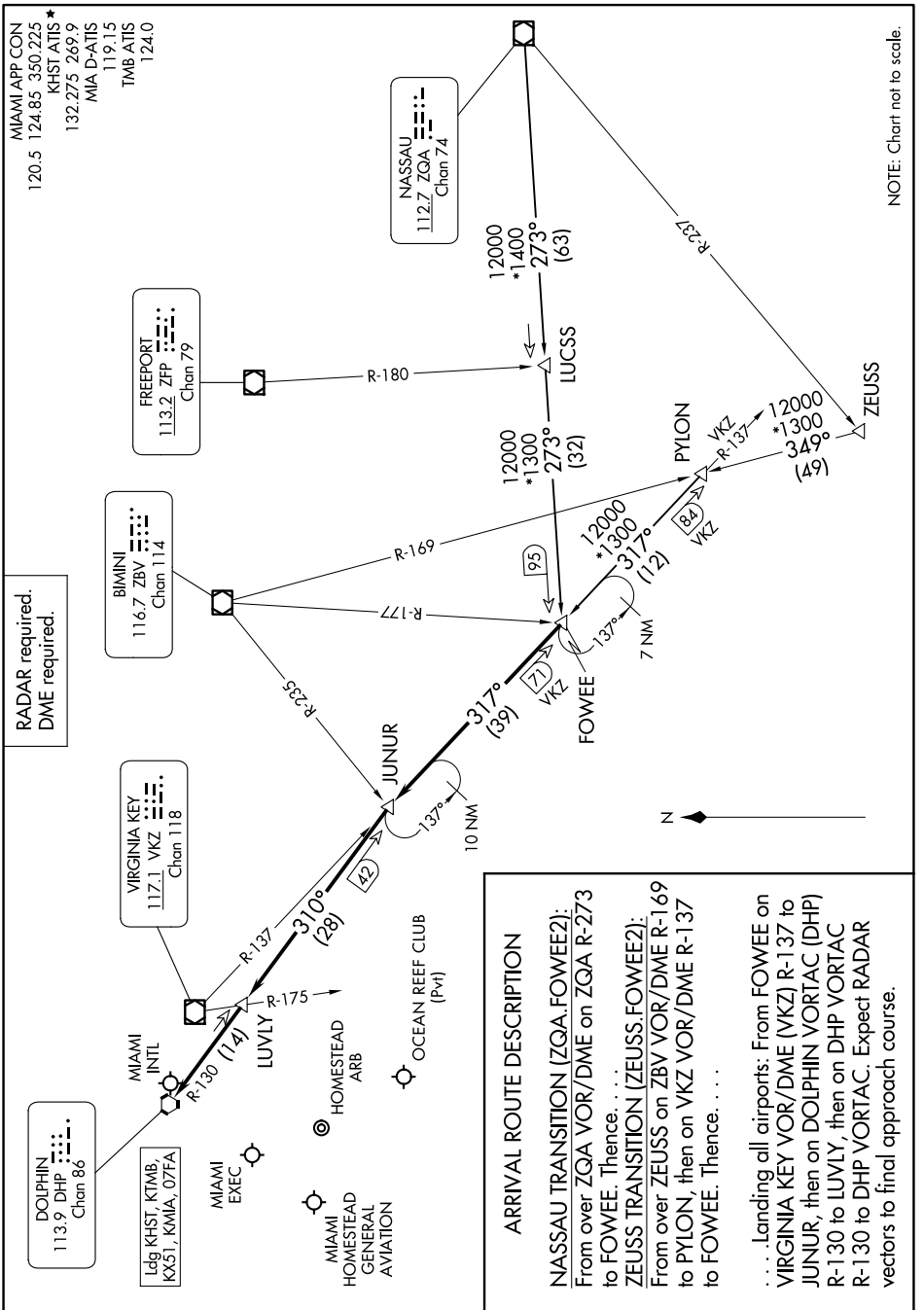


FOWEE TWO ARRIVAL



FOWEE TWO ARRIVAL

SE-3, 23 JAN 2025 to 20 FEB 2025

SE-3, 23 JAN 2025 to 20 FEB 2025

NOTE: Chart not to scale.

MIAMI APP CON
120.5 124.85 350 225
KHST ATIS *
132.275 269.9
MIA D-ATIS
119.15
TMB ATIS
124.0

RADAR required.
DME required.

DOLPHIN
113.9 DHP
Chan 86

Ldg KHST, KIMB,
KX51, KMIA, 07FA
MIAMI EXEC

VIRGINIA KEY
117.1 VKZ
Chan 118

BIMINI
116.7 ZBV
Chan 114

FREEPORT
113.2 ZFP
Chan 79

NASSAU
112.7 ZQA
Chan 74

ARRIVAL ROUTE DESCRIPTION

NASSAU TRANSITION (ZQA.FOWEE2):
From over ZQA VOR/DME on ZQA R-273 to FOWEE. Thence. . . .

ZEUSS TRANSITION (ZEUSS.FOWEE2):
From over ZEUSS on ZBV VOR/DME R-169 to PYLON, then on VKZ VOR/DME R-137 to FOWEE. Thence. . . .

. . . . Landing all airports: From FOWEE on VIRGINIA KEY VOR/DME (VKZ) R-137 to JUNIOR, then on DOLPHIN VORTAC (DHP) R-130 to LUVLY, then on DHP VORTAC R-130 to DHP VORTAC. Expect RADAR vectors to final approach course.