

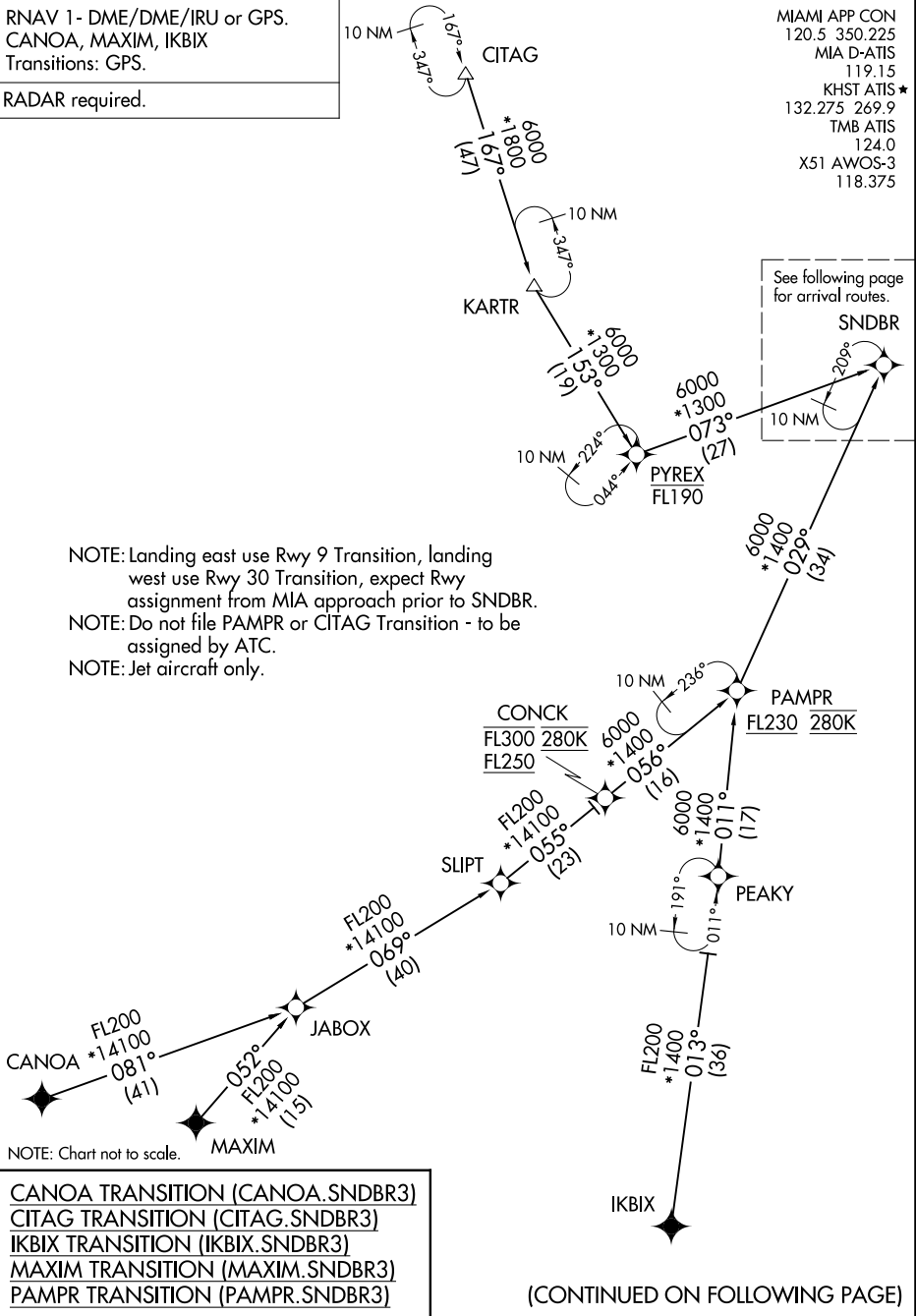
SNDBR THREE ARRIVAL (RNAV) Transition Routes

MIAMI, FLORIDA

RNAV 1- DME/DME/IRU or GPS.
CANOA, MAXIM, IKBIX
Transitions: GPS.

RADAR required.

MIAMI APP CON
120.5 350.225
MIA D-ATIS
119.15
KHST ATIS *
132.275 269.9
TMB ATIS
124.0
X51 AWOS-3
118.375



NOTE: Landing east use Rwy 9 Transition, landing west use Rwy 30 Transition, expect Rwy assignment from MIA approach prior to SNDBR.
 NOTE: Do not file PAMPR or CITAG Transition - to be assigned by ATC.
 NOTE: Jet aircraft only.

See following page for arrival routes.

- CANOA TRANSITION (CANOA.SNDBR3)
- CITAG TRANSITION (CITAG.SNDBR3)
- IKBIX TRANSITION (IKBIX.SNDBR3)
- MAXIM TRANSITION (MAXIM.SNDBR3)
- PAMPR TRANSITION (PAMPR.SNDBR3)

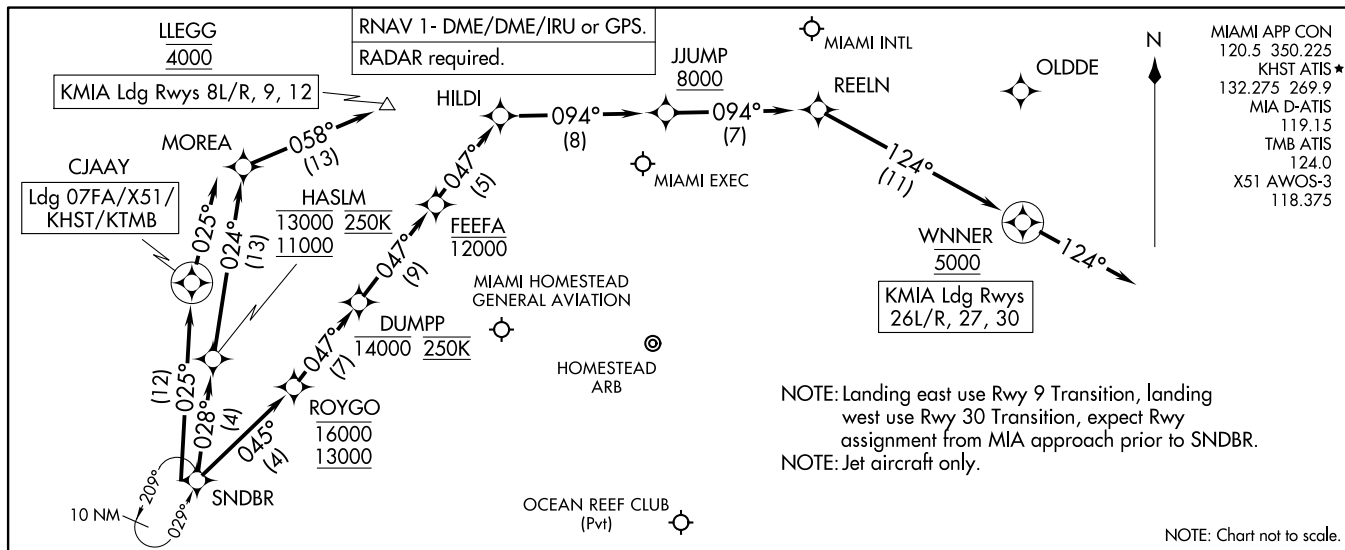
(CONTINUED ON FOLLOWING PAGE)

SE-3, 23 JAN 2025 to 20 FEB 2025

SE-3, 23 JAN 2025 to 20 FEB 2025

SND BR THREE ARRIVAL (RNAV) Arrival Routes
(SND BR, SND BR3) 29DEC22

MIAMI, FLORIDA



(SND BR, SND BR3) 23222
SND BR THREE ARRIVAL (RNAV) Arrival Routes

A1-257 (FAA)

MIAMI, FLORIDA

ARRIVAL ROUTE DESCRIPTION

LANDING KMIA RUNWAYS 8L/R, 9, 12: From SND BR on track 028° to cross HASLM between 11000 and 13000 and at 250K, then on track 024° to MOREA, then on track 058° to cross LLEGG at 4000. Expect ILS or RNAV Rwy 9 approach or RADAR vectors to final approach course.

LANDING KMIA RUNWAYS 26L/R, 27, 30: From SND BR on track 045° to cross ROYGO between 13000 and 16000, then on track 047° to cross DUMPP at or below 14000 and at 250K, then on track 047° to cross FEFFA at or below 12000, then on track 047° to HILDI, then on track 094° to cross JJUMP at or above 8000, then on track 094° to REELN, then on track 124° to cross WNNER at 5000, then on track 124°. Expect RADAR vectors to final approach course.

LANDING 07FA/X51/KHST/KTMB: From SND BR on track 025° to CJAAY, then on track 025°. Expect RADAR vectors to final approach course.