

HI-VOR or TACAN RWY 16R

VORTAC MAF 114.8 Chan 95	APCH CRS 183°	Rwy ldg TDZE Arprt Elev 9501 2872 2872
--	-------------------------	--

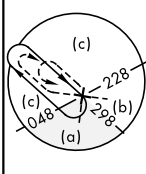
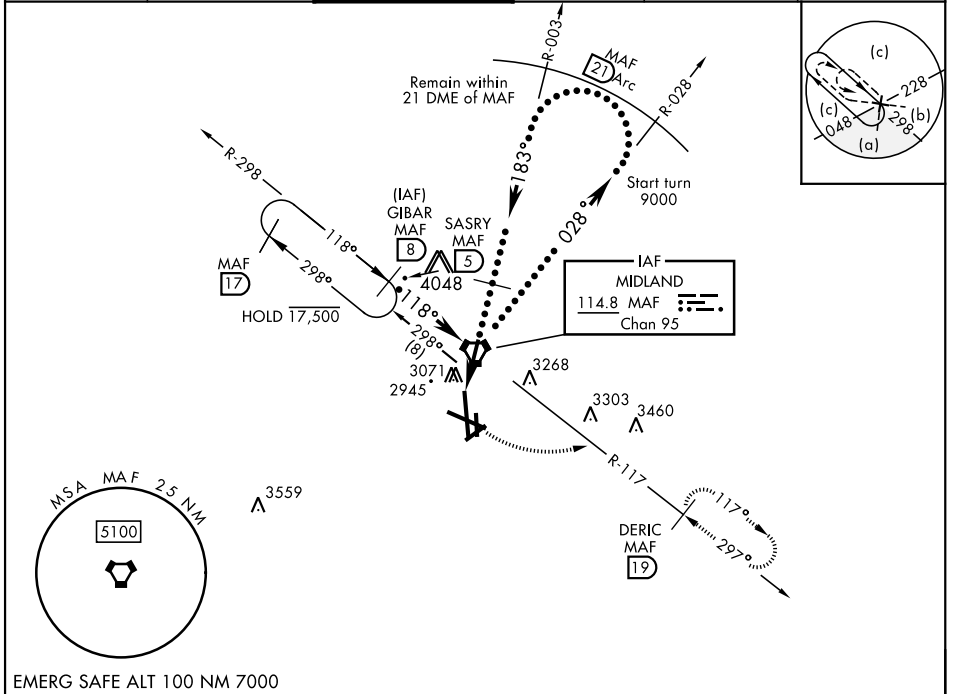
AL-258 [USAF] MIDLAND INTL AIR AND SPACE PORT (KMAF)

DME required.

▼ * Circling Rwy 16L NA at night.

MISSED APPROACH: Climb to 3500 then climbing left turn to 4800 on MAF VORTAC R-117 to DERIC/MAF 19° DME and hold.

ATIS ★ 126.8 235.975	APP CON 124.6 290.4	TOWER ★ 118.7 (CTAF) 273.45	GND CON 121.9 348.6	CLNC DEL 118.05 317.65	UNICOM 122.95
--------------------------------	-------------------------------	---------------------------------------	-------------------------------	----------------------------------	-------------------------



SC-3, 23 JAN 2025 to 20 FEB 2025

SC-3, 23 JAN 2025 to 20 FEB 2025

EMERG SAFE ALT 100 NM 7000		VGSI and descent angles not coincident 3500 4800 DERIC MAF 19		ELEV 2872 TDZE 2872 Rwy 10 ldg 8177 Rwy 28 ldg 7610 183° 3.1 NM from VORTAC
GIBAR R-298 118° 14,000 14,000 028° SASRY R-003 183° 4600 4000 3.1 NM 3.29° TCH 50		Start turn at 9000 remain within 21 DME Start turn 9000 Remain within 21 DME of MAF MAF Arc R-003 R-028 R-117 DERIC MAF 19		
CATEGORY	C	D	E	
S-16R	3400-1½	528 (600-1½)		
CIRCLING *	3440-1½ 568 (600-1½)	3520-2 648 (700-2)	3600-2½ 728 (800-2½)	

MIDLAND, TEXAS 31° 57' N-102° 12' W MIDLAND INTL AIR AND SPACE PORT (KMAF)

Amtd 3 20JUL17

HI-VOR or TACAN RWY 16R

HIRL Rwy 10-28, 16R-34L
MIRL Rwy 4-22, 16L-34R
REIL Rwy 34L