


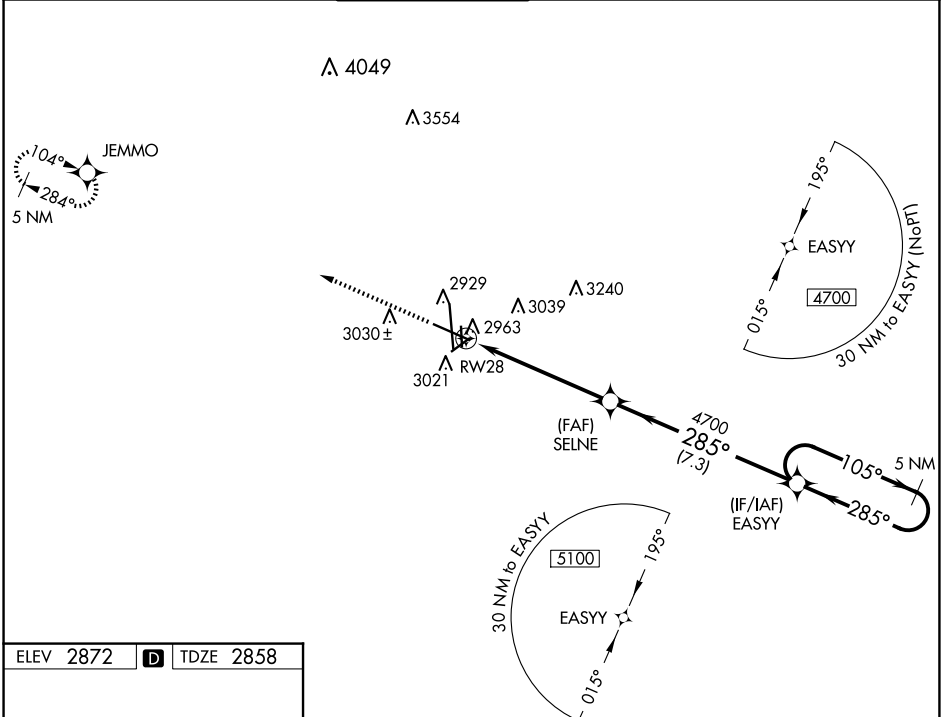
WAAS CH 81816 W28A	APP CRS 285°	Rwy Idg TDZE Apt Elev	7610 2858 2872
--	------------------------	-----------------------------	---

RNAV (GPS) RWY 28

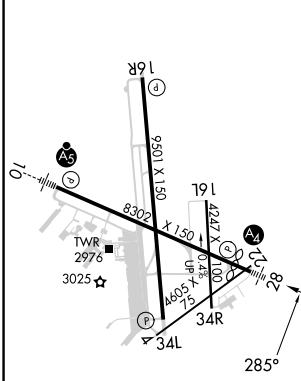
MIDLAND INTL AIR AND SPACE PORT (M.A.F.)

<p>▼ For uncompensated Baro-VNAV systems, LNAV/VNAV NA below -11°C (13°F) or above 25°C (77°F). Circling Rwy 16L NA at night. DME/DME RNP-0.3 NA. Inop table does not apply to LPV all Cats.</p>		<p>MALS </p>	<p>MISSED APPROACH: Climb to 5000 direct JEMMO and hold.</p>
--	--	--	--

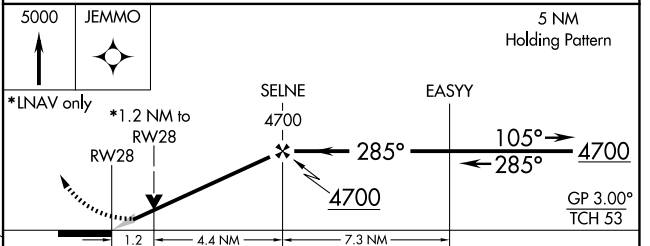
ATIS 126.8 235.975	MIDLAND APP CON * 124.6 290.4	MIDLAND TOWER * 118.7 (CTAF) 0273.45	GND CON 121.9 348.6	CLNC DEL 118.05 317.65	UNICOM 122.95
------------------------------	---	--	-------------------------------	----------------------------------	-------------------------



ELEV 2872	D	TDZE 2858
-----------	----------	-----------



REIL Rwy 34L
MIRL Rwys 4-22 and 16L-34R
HIRL Rwys 10-28 and 16R-34L



CATEGORY	A	B	C	D
LPV DA		3058-¾	200 (200-¾)	
LNAV/VNAV DA		3271-1½	413 (500-1½)	
LNAV MDA	3280-¾	422 (500-¾)	3280-1	422 (500-1)
CIRCLING	3440-1	568 (600-1)	3440-1½ 568 (600-1½)	3520-2 648 (700-2)