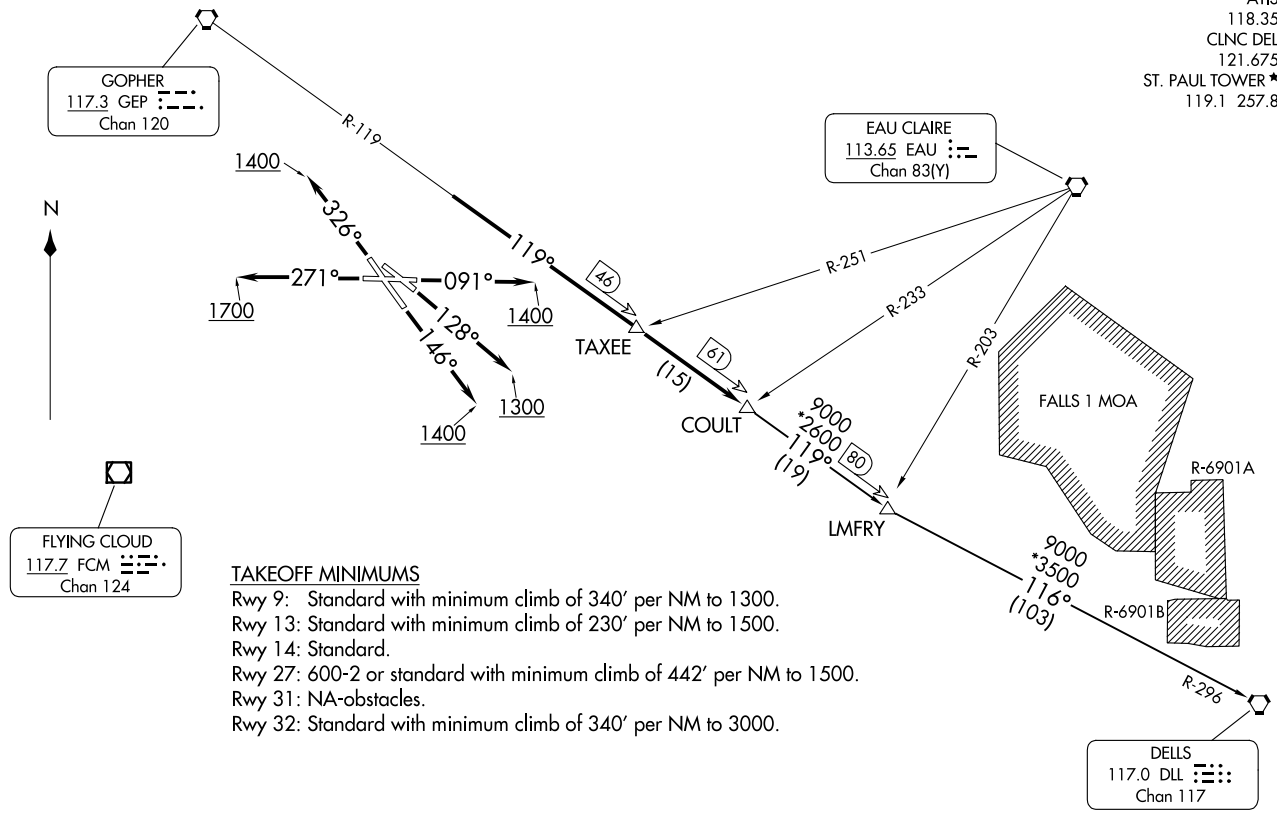


MINNEAPOLIS DEP CON  
 121.2 335.65  
 ATIS  
 118.35  
 CLNC DEL  
 121.675  
 ST. PAUL TOWER ★  
 119.1 257.8



**TAKEOFF MINIMUMS**

- Rwy 9: Standard with minimum climb of 340' per NM to 1300.
- Rwy 13: Standard with minimum climb of 230' per NM to 1500.
- Rwy 14: Standard.
- Rwy 27: 600-2 or standard with minimum climb of 442' per NM to 1500.
- Rwy 31: NA-obstacles.
- Rwy 32: Standard with minimum climb of 340' per NM to 3000.

GOPHER  
 117.3 GEP :--:  
 Chan 120

EAU CLAIRE  
 113.65 EAU :--:  
 Chan 83(Y)

FLYING CLOUD  
 117.7 FCM :--:  
 Chan 124

DELLS  
 117.0 DLL :--:  
 Chan 117

NOTE: RADAR required.  
 NOTE: Chart not to scale.

(CONTINUED ON FOLLOWING PAGE)



DEPARTURE ROUTE DESCRIPTION

TAKEOFF RUNWAY 9: Climb heading 091° to 1400 for RADAR vectors to intercept GEP R-119 to COULT INT/GEP 61 DME, thence . . . .

TAKEOFF RUNWAY 13: Climb heading 128° to 1300 for RADAR vectors to intercept GEP R-119 to COULT INT/GEP 61 DME, thence . . . .

TAKEOFF RUNWAY 14: Climb heading 146° to 1400 for RADAR vectors to intercept GEP R-119 to COULT INT/GEP 61 DME, thence . . . .

TAKEOFF RUNWAY 27: Climb heading 271° to 1700 for RADAR vectors to intercept GEP R-119 to COULT INT/GEP 61 DME, thence . . . .

TAKEOFF RUNWAY 32: Climb heading 326° to 1400 for RADAR vectors to intercept GEP R-119 to COULT INT/GEP 61 DME, thence . . . .

. . . . on transition or assigned route. Expect clearance to filed altitude/flight level 10 (ten) minutes after departure.

DELLS TRANSITION (COULT7.DLL): From over COULT INT on GEP R-119 to LMFY INT then on DLL R-296 to DLL VORTAC.

NC-1, 23 JAN 2025 to 20 FEB 2025

NC-1, 23 JAN 2025 to 20 FEB 2025