

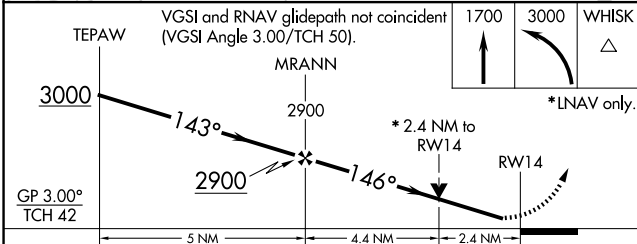
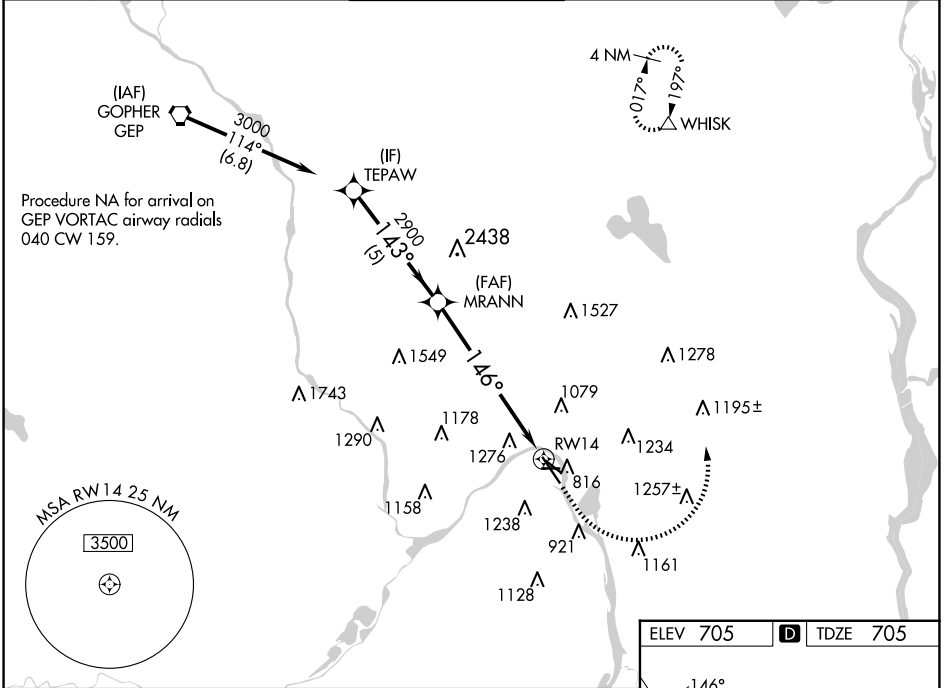
WAAS CH 62828 W14A	APP CRS 146°	Rwy Idg TDZE Apt Elev	6148 705 705
--	------------------------	-----------------------------	---

RNAV (GPS) RWY 14

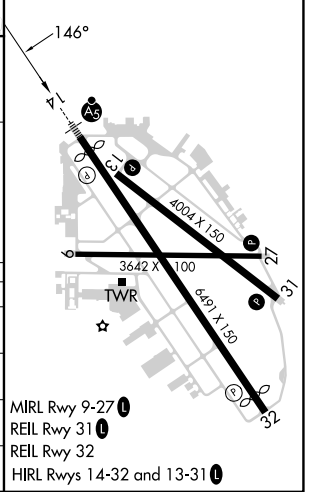
ST PAUL DOWNTOWN HOLMAN FLD (STP)

W A 30 -30°C	For uncompensated Baro-VNAV systems, LNAV/VNAV NA below -21°C (-5°F) or above 54°C (130°F). Rwy 14 helicopter visibility reduction below 3/4 SM NA. DME/DME RNP-0.3 NA. For inop MALSR, increase LNAV Cats C and D to 2 1/2 SM.	MALSR 	MISSED APPROACH: (Do not exceed 250K until WHISK) Climb to 1700 then climbing left turn to 3000 direct WHISK and hold.
---	---	-----------	--

ATIS 118.35	MINNEAPOLIS APP CON 121.2 335.65	ST. PAUL TOWER ★ 119.1 (CTAF) 0 257.8	GND CON 121.675	CLNC DEL 121.675	UNICOM 122.95
-----------------------	--	--	---------------------------	----------------------------	-------------------------



ELEV 705	D TDZE 705
----------	-------------------



CATEGORY	A	B	C	D
LPV DA	955/40		250 (300-3/4)	
LNAV/VNAV DA	1511-2 1/2		806 (900-2 1/2)	
LNAV MDA	1520/40 815 (900-3/4)		1520-1 7/8 815 (900-1 7/8)	
C CIRCLING	1580-1 1/4 875 (900-1 1/4)		1580-2 1/2 875 (900-2 1/2) 1580-2 3/4 875 (900-2 3/4)	

MRL Rwy 9-27 **0**
REIL Rwy 31 **0**
REIL Rwy 32
HIRL Rwy 14-32 and 13-31 **0**

NC-1, 23 JAN 2025 to 20 FEB 2025

NC-1, 23 JAN 2025 to 20 FEB 2025