

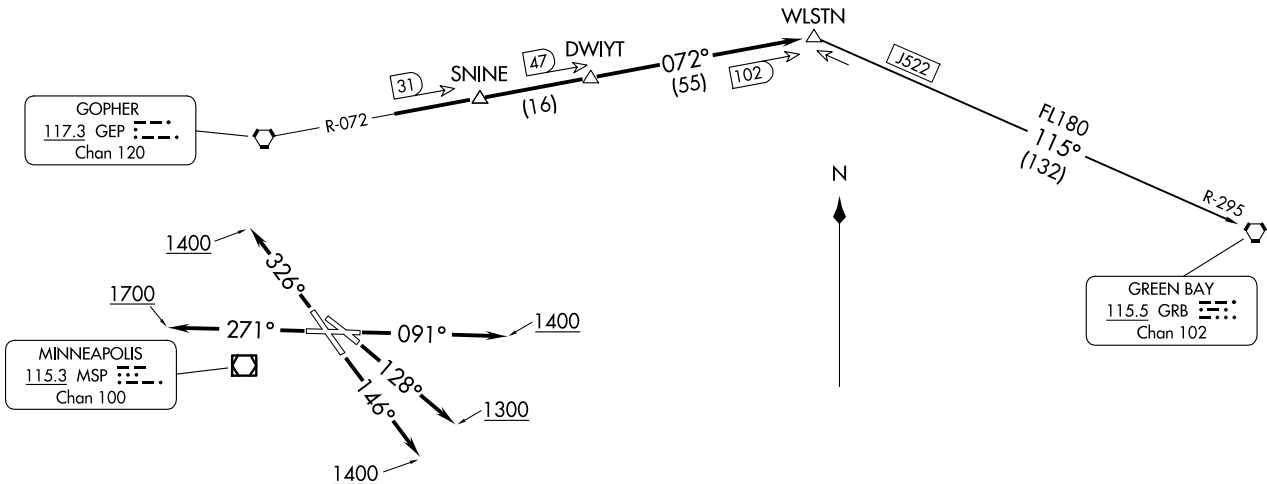
**TOP ALTITUDE:  
(JETS) 7000/  
(PROPS) 5000**

MINNEAPOLIS DEP CON  
121.2 335.65  
ATIS  
118.35  
CLNC DEL  
121.675  
ST. PAUL TOWER★  
119.1 257.8

GOPHER  
117.3 GEP  
Chan 120

MINNEAPOLIS  
115.3 MSP  
Chan 100

GREEN BAY  
115.5 GRB  
Chan 102



**TAKEOFF MINIMUMS**

- Rwy 9: Standard with minimum climb of 340' per NM to 1300.
- Rwy 13: Standard with minimum climb of 235' per NM to 1500.
- Rwy 14: Standard.
- Rwy 27: 600-2 or standard with minimum climb of 442' per NM to 1500.
- Rwy 31: NA-Obstacles.
- Rwy 32: Standard with minimum climb of 340' per NM to 3000.

(CONTINUED ON FOLLOWING PAGE)

NOTE: RADAR required.

NOTE: Chart not to scale.

WLSTN SEVEN DEPARTURE  
(WLSTN7.WLSTN) 17AUG17

ST. PAUL, MINNESOTA  
ST. PAUL DOWNTOWN HOLMAN FLD (STP)

(WLSTN7.WLSTN) 23334  
WLSTN SEVEN DEPARTURE

ST. PAUL DOWNTOWN HOLMAN FLD (STP)  
AL-263 (FAA)  
ST. PAUL, MINNESOTA



DEPARTURE ROUTE DESCRIPTION

TAKEOFF RUNWAY 9: Climb heading 091° to 1400 for RADAR vectors to GEP R-072 to WLSTN/GEP 102 DME, thence . . . .

TAKEOFF RUNWAY 13: Climb heading 128° to 1300 for RADAR vectors to GEP R-072 to WLSTN/GEP 102 DME, thence . . . .

TAKEOFF RUNWAY 14: Climb heading 146° to 1400 for RADAR vectors to GEP R-072 to WLSTN/GEP 102 DME, thence . . . .

TAKEOFF RUNWAY 27: Climb heading 271° to 1700 for RADAR vectors to GEP R-072 to WLSTN/GEP 102 DME, thence . . . .

TAKEOFF RUNWAY 32: Climb heading 326° to 1400 for RADAR vectors to GEP R-072 to WLSTN/GEP 102 DME, thence . . . .

. . . .on assigned transition or assigned route. Expect clearance to filed altitude/flight level 10 (ten) minutes after departure.

GREEN BAY TRANSITION (WLSTN7.GRB): From over WLSTN on GRB R-295 to GRB VORTAC.

NC-1, 23 JAN 2025 to 20 FEB 2025

NC-1, 23 JAN 2025 to 20 FEB 2025