

WAAS CH 50411 W14A	APP CRS 140°	Rwy Idg 9618 TDZE 26 Apt Elev 26
--	------------------------	---

RNAV (GPS) RWY 14

MOBILE INTL (BFM)

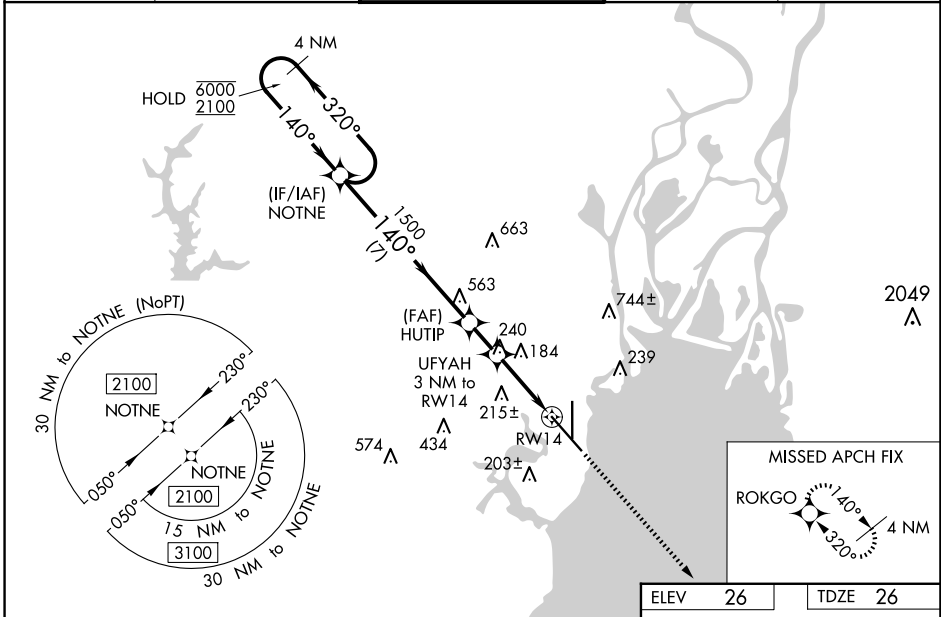
RNP APCH - GPS.



Rwy 14 helicopter visibility reduction below 3/4 SM NA. For uncompensated Baro-VNAV systems, LNAV/VNAV NA below -2°C or above 54°C.

MISSED APPROACH:
Climb to 1700 direct
ROKGO and hold.

ATIS 135.575	MOBILE APP CON * 118.5 269.3	INTERNATIONAL TOWER* 118.8 (CTAF) 0 251.1	GND CON 121.7 239.3	UNICOM 122.95
------------------------	--	---	-------------------------------	-------------------------



SE-4, 23 JAN 2025 to 20 FEB 2025

SE-4, 23 JAN 2025 to 20 FEB 2025

4 NM Holding Pattern		NOTNE		HUTIP 1500		UFYAH 3 NM to RW14		1700 ROKGO	
6000 ← 320°		2100 → 140°		1500		1020		1.1 NM to RW14	
GP 3.00° TCH 50		7 NM		1.5 NM		1.9 NM		1.1 NM	
CATEGORY	A	B	C	D					
LPV DA	308-7/8		282 (300-7/8)						
LNAV/VNAV DA	396-1		370 (400-1)						
LNAV MDA	440-1	414 (500-1)		440-1 1/8	414 (500-1 1/8)				
CIRCLING	680-1	654 (700-1)		680-1 3/4	1100-3		1074 (1100-3)		

VGSI and RNAV glidepath not coincident (VGSI Angle 3.00/TCH 68).

REIL Rwy 14
MIRL Rwy 18-36
HIRL Rwy 14-32
TDZ/CL Rwy 32