

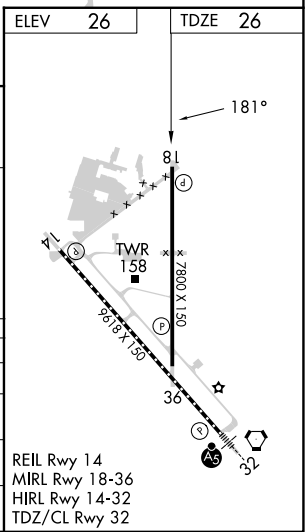
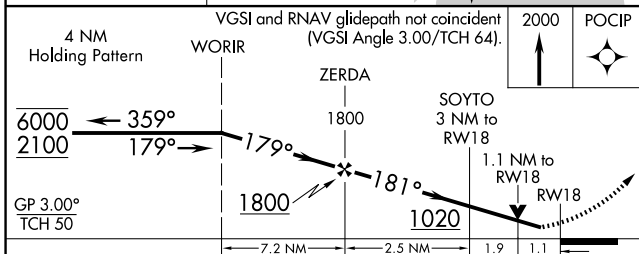
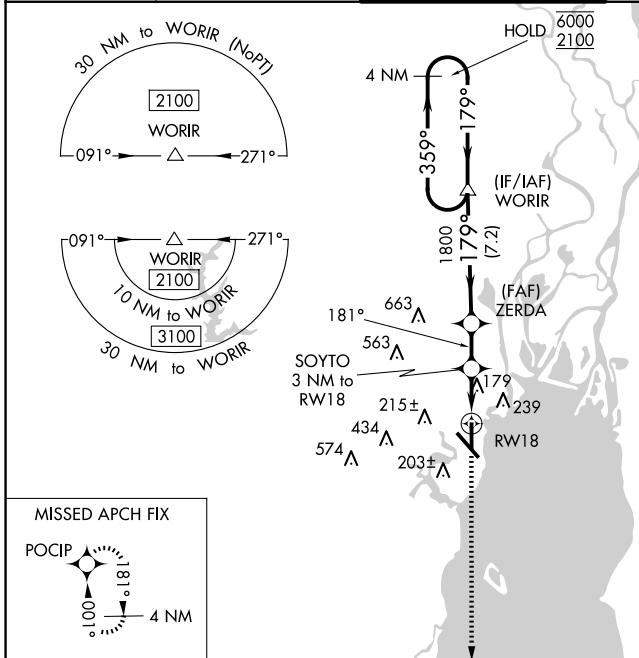
WAAS CH 97611 W18A	APP CRS 181°	Rwy Idg 7800 TDZE 26 Apt Elev 26
--	------------------------	---

RNAV (GPS) RWY 18

MOBILE INTL (BFM)

RNP APCH - GPS.		<p>▽ ▲ Rwy 18 helicopter visibility reduction below ¾ SM NA. For uncompensated Baro-VNAV systems, LNAV/VNAV NA below -2°C or above 54°C.</p>	<p>MISSED APPROACH: Climb to 2000 direct POCIP and hold.</p>

<p>ATIS 135.575</p>	<p>MOBILE APP CON * 118.5 269.3</p>	<p>INTERNATIONAL TOWER * 118.8 (CTAF) 0 251.1</p>	<p>GND CON 121.7 239.3</p>	<p>UNICOM 122.95</p>
--------------------------------	--	--	---------------------------------------	---------------------------------



CATEGORY	A	B	C	D
LPV DA		276-1	250 (300-1)	
LNAV/VNAV DA		419-1½	393 (400-1½)	
LNAV MDA	440-1	414 (500-1)	440-1½	414 (500-1½)
C CIRCLING	680-1	654 (700-1)	680-1¾ 654 (700-1¾)	1100-3 1074 (1100-3)

SE-4, 23 JAN 2025 to 20 FEB 2025

SE-4, 23 JAN 2025 to 20 FEB 2025