

VORTAC BFM 116.35 Chan 110(Y)	APP CRS 333°	Rwy Idg TDZE 25 Apt Elev 26	9618
--	------------------------	---	-------------

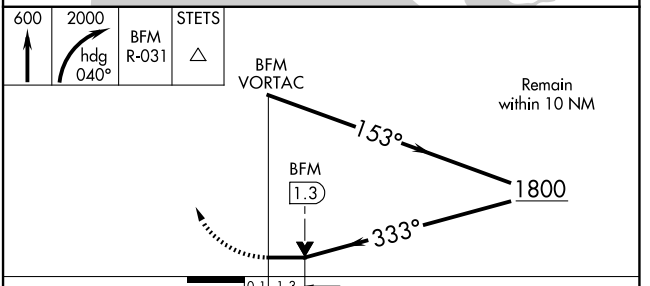
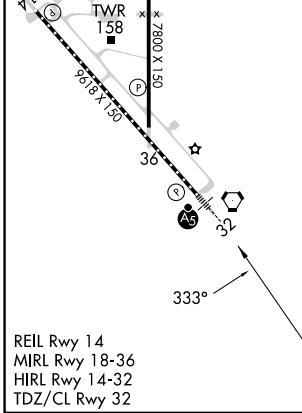
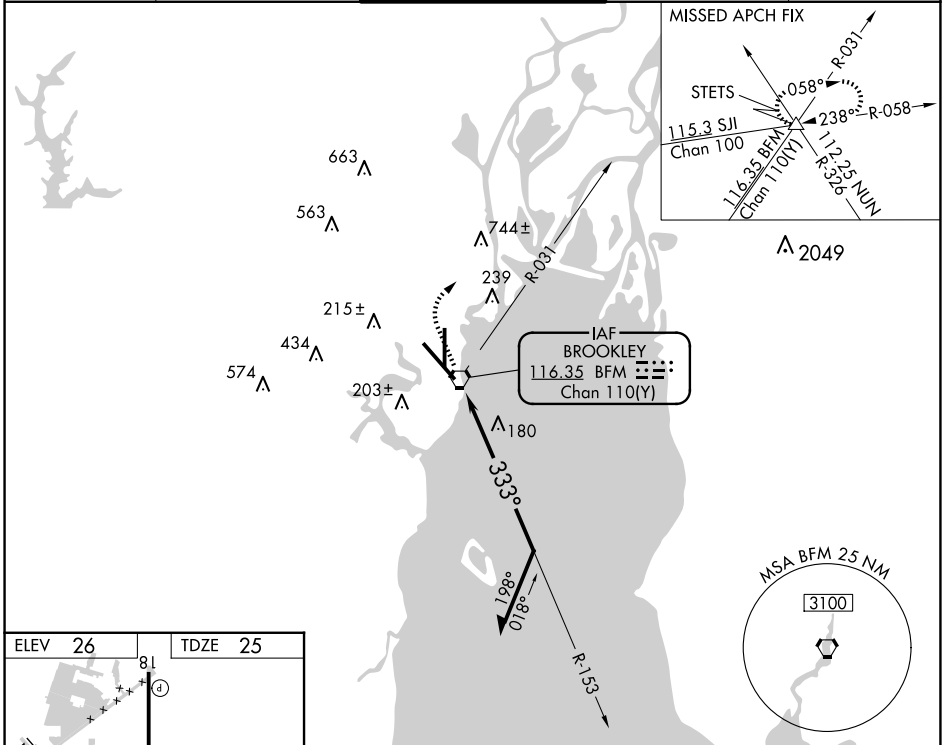
VOR RWY 32

MOBILE INTL (BFM)

⚠ When local altimeter setting not received, use Mobile Rgnl altimeter setting and increase all MDAs 60 feet. For inop MALS/R, increase S-32 Cats C/D visibility to 1 $\frac{1}{2}$ SM. For inop MALS/R when using Mobile Rgnl altimeter setting, increase S-32 Cats C/D visibility to 1 $\frac{1}{2}$ SM.

MALS/R MISSED APPROACH: Climb to 600 then climbing right turn to 2000 via heading 040° and BFM VORTAC R-031 to STETS INT and hold.

ATIS 135.575	MOBILE APP CON ★ 118.5 269.3	INTERNATIONAL TOWER★ 118.8 (CTAF) 0 251.1	GND CON 121.7 239.3	UNICOM 122.95
------------------------	--	--	-------------------------------	-------------------------



CATEGORY	A	B	C	D
S-32	540/24	515 (600- $\frac{1}{2}$)	540/55	515 (600-1)
☐ CIRCLING	680-1	654 (700-1)	680-1 $\frac{3}{4}$ 654 (700-1 $\frac{3}{4}$)	1100-3 1074 (1000-3)

SE-4, 23 JAN 2025 to 20 FEB 2025

SE-4, 23 JAN 2025 to 20 FEB 2025