

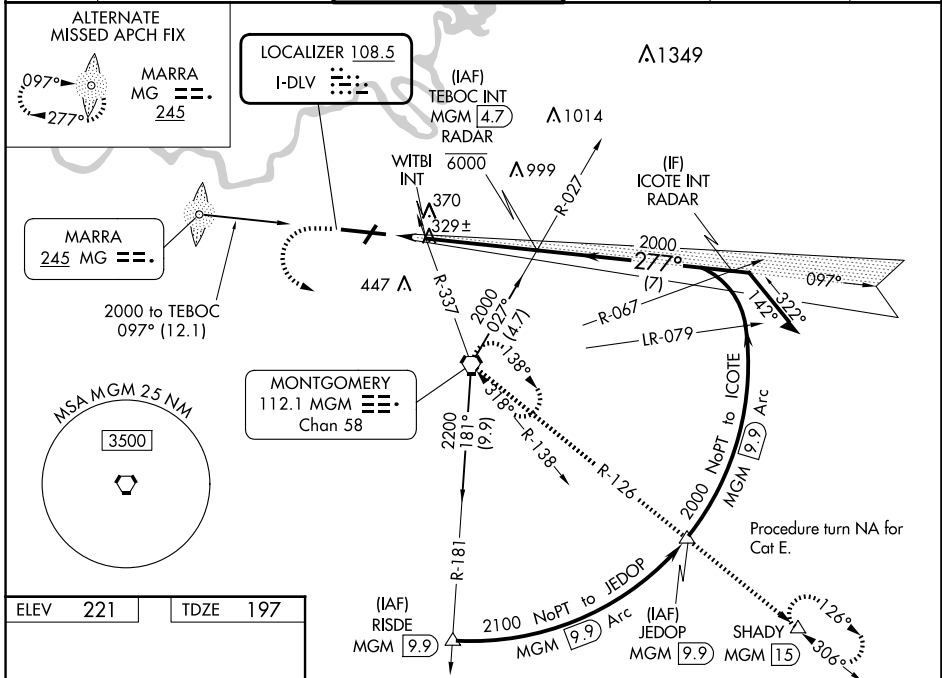
LOC I-DLV 108.5	APP CRS 277°	Rwy Idg TDZE Apt Elev	9020 197 221
---------------------------	------------------------	-----------------------------	---

ILS Y or LOC RWY 28

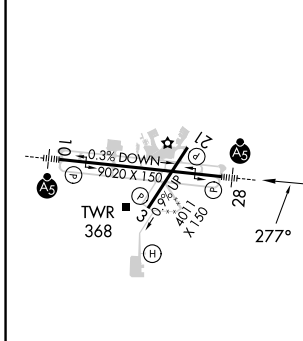
MONTGOMERY RGNL (DANNELLY FLD) (MGM)

	For inop ALS, increase S-ILS 28 Cat E visibility to ½ SM; S-LOC 28 Cat C/D/E visibility to 1 ¾ SM and increase WITBI fix minimums S-LOC 28 Cat E visibility to 1 ½ SM. Circling for Cat E NA north of Rwy 10-28.	MALSR 	MISSED APPROACH: Climb to 700 then climbing left turn to 3000 direct MGM VORTAC and hold, continue climb-in-hold to 3000 (TACAN aircraft continue climb to 3500 on MGM VORTAC R-126 to SHADY/MGM 15 DME and hold SE, RT, 306° inbound).

ATIS 120.675	MONTGOMERY APP CON ★ 124.0 363.025	DANNELLY TOWER ★ 119.7 (CTAF) 360.85	GND CON 121.7 348.6	CLNC DEL 118.3 270.3	UNICOM 122.95
------------------------	--	--	-------------------------------	--------------------------------	-------------------------



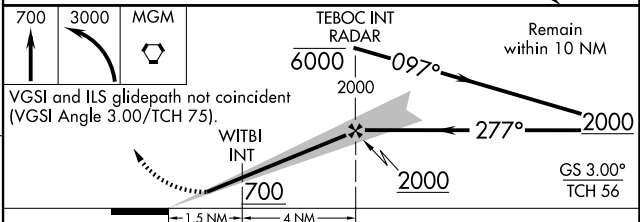
ELEV 221	TDZE 197
----------	----------



REIL Rwy 3
MIRL Rwy 3-21
HIRL Rwy 10-28

FAF to MAP 5.5 NM

Knots	60	90	120	150	180
Min:Sec	5:30	3:40	2:45	2:12	1:50



CATEGORY	A	B	C	D	E
S-ILS 28	397-½ 200 (200-½)				
S-LOC 28	700-½	503 (500-½)	700-1 503 (500-1)		
CIRCLING	700-1	479 (500-1)	800-1½ 579 (600-1½)	860-2 639 (700-2)	860-2¼ 639 (700-2¼)
WITBI FIX MINIMUMS (DUAL VOR RECEIVERS REQUIRED)					
S-LOC 28	620-½	423 (400-½)	620-¾ 423 (400-¾)		
CIRCLING	700-1	479 (500-1)	800-1½ 579 (600-1½)	860-2 639 (700-2)	860-2¼ 639 (700-2¼)

SE-4, 23 JAN 2025 to 20 FEB 2025

SE-4, 23 JAN 2025 to 20 FEB 2025