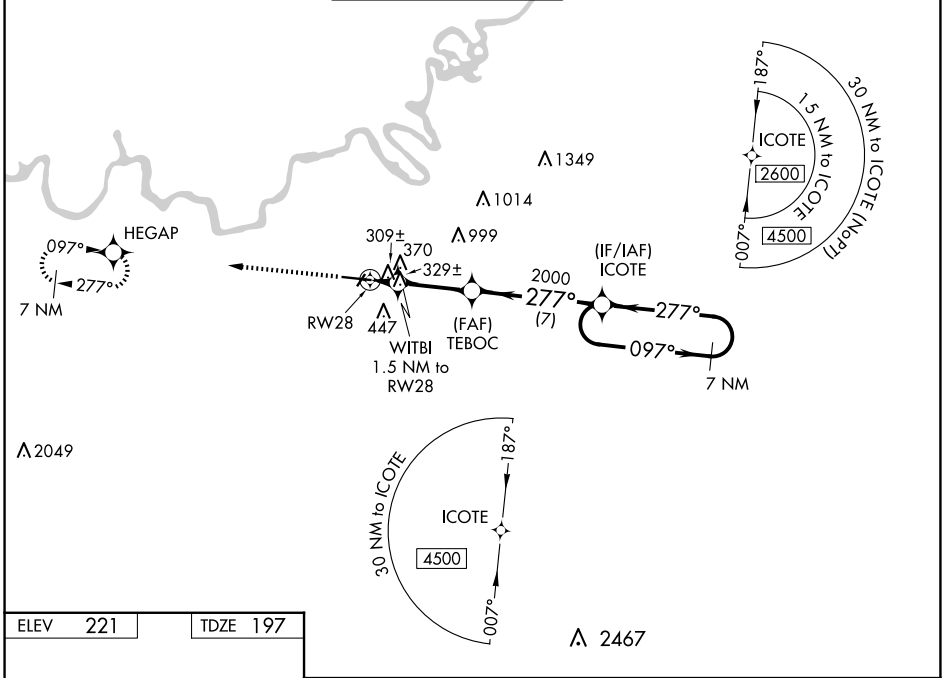


WAAS CH 56200 W28A	APP CRS 277°	Rwy Idg TDZE Apt Elev	9020 197 221
--	------------------------	-----------------------------	---

RNAV (GPS) RWY 28
MONTGOMERY RGNL (DANNELLY FLD) (MGM)

<p>⚠ For uncompensated Baro-VNAV systems, LNAV/VNAV NA below -8°C (18°F) or above 54°C (130°F). DME/DME RNP-0.3 NA. For inop MALSR, increase LPV Cat E visibility to ¾ mile; increase LNAV/VNAV Cat E visibility to 1⅓ mile; increase LNAV Cat E visibility to 1⅓ mile. Circling for Cat E NA north of Rwy 10-28.</p>	<p>MALSR</p>	<p>MISSED APPROACH: Climb to 3100 direct HEGAP and hold.</p>
	<p>⚠</p>	

ATIS 120.675	MONTGOMERY APP CON * 124.0 363.025	DANNELLY TOWER * 119.7 (CTAF) 0 360.85	GND CON 121.7 348.6	CLNC DEL 118.3 270.3	UNICOM 122.95
------------------------	--	--	-------------------------------	--------------------------------	-------------------------



ELEV 221	TDZE 197
-----------------	-----------------

Detailed diagram of the RWY 28 approach showing:

- Altitudes:** 3100, 309±, 370, 329±, 2000, 277°.
- Distances:** 1.5 NM to RWY 28, 1 NM to RWY 28.
- Navigation Aids:** HEGAP, WITBI, TEBOC, ICOTE.
- Obstacles:** A1349, A1014, A999, A2049, A2467.
- Distances:** 7 NM, 1.5 NM to RWY 28, 30 NM to ICOTE.

3100 HEGAP	VGSI and RNAV glidepath not coincident (VGSI Angle 3.00/TCH 75).	7 NM Holding Pattern
* LNAV only	WITBI 1.5 NM to RWY 28	TEBOC 2000
* 1 NM to RWY 28	ICOTE 277°	ICOTE 2600
1 NM	0.5	4 NM
7 NM		

CATEGORY	A	B	C	D	E
LPV DA	397-½		200 (200-½)		
LNAV/VNAV DA	606-⅞		409 (400-⅞)		
LNAV MDA	580-½ 383 (400-½)		580-⅝ 383 (400-⅝)		
C CIRCLING	700-1 479 (500-1)		800-1½ 579 (600-1½)	860-2 639 (700-2)	860-2¼ 639 (700-2¼)

RNAV (GPS) RWY 28

SE-4, 23 JAN 2025 to 20 FEB 2025

SE-4, 23 JAN 2025 to 20 FEB 2025